



Features Flash

April 3, 2012

entrée version 3.6.8

entrée.DOC

entrée.QB

entrée.MW

entrée.NET version 3.3.5

Electronic Order Pad

Table of Contents



entree Version 3.6.8 Features

System Option to Send Email Using SSL Encrypted Servers	3
Inventory Kits Tab "Copy Item" button Copies Ingredients List	4
Brand Maintenance "Internet Image Search" Button Added	5

entree.DOC (Document Scanning) Features

"Scan Loading Sheets" Dialog Compatible with Windows Font Scaling on Computers with Vista and Windows 7	6
---	---

entree.QB (QuickBooks Interface) Features

entree Close Purchase Order Procedure Can Post to entree.QB AP	6
--	---

entree.MW (Multi-Warehouse) Features

Transfer / Save Processes Display Progress Bar	6
Save Process Hides "OK" Button	6
Order Guide Mode "Escape" Button Change	6

entree.NET version 3.3.5 & Electronic Order Pad Features

System Option to Display Manufacturer's Item Numbers (requires entree version 3.6.7 or later)	7 - 8
New Catalog Item# Tab Lists All Items & Disables Grouping	9
Support for Matrix Code Pricing (requires entree version 3.6.8 or later)	10
entree Data Export to entree.NET Supports Matrix Code Pricing	10
About NECS	11

entrée Version 3.6.8 Features



System Option to Send Email Using SSL Encrypted Servers

Support has been added to the main **entrée** system so you can send email messages through servers that use SSL encryption, such as the SMTP service provided by **Google**.

To enable the SSL email feature:

1. The System Administrator will login to the main **entrée** system.
2. Use menu path: **System > Preferences > Email Setup** tab.
3. In the **Email Setup** tab check the "**Use SSL/TLS**" option.
4. Enter the **SMTP mail server** and **Port** information. (You can get this information from your email provider.)
5. Check the **Administrator address** to be sure it is current or enter this email address if not populated.
6. Check the **BCC administrator account when email are sent** box if you would like a blind carbon copy of every email sent to you.
7. Click the **Test current settings** button to send a test email to the **Administrator address**. If the email test fails make corrections in the settings here and test again.
8. Click **OK**.

* Google is a registered trademark of Google Inc.

System Preferences

Data Files | Pricing Setup | GL Accounts | Scrolling Message | Personal Settings | Company Invoice Headings | **Email Setup** | Re |

SMTP mail server: SMTP.CSHORE.COM

Port: 465 Use SSL/TLS

Administrator address: FRANCES@NECS.COM

BCC administrator account when emails are sent

Login settings

Use authentication when sending mail

Username:

Password:

Default body text for email messages

This message and the attached documents were generated using entrée version 3.

Test current settings

OK Cancel

entrée Version 3.6.8 Features



Inventory Kits Tab “Copy Item” button Copies Ingredients List

Support has been added to **entrée** so you can use the **Copy Item** button to copy the entire ingredient list from a Kit item in the Inventory File **Kits** tab.

Once the copy is made a new item number can be assigned and the new item can be edited.

Inventory File Maintenance

Item Number: 50705 Description: POTATOES 9OCT. Brand Name: IDAHO

Unit of Measure: CASE Pack Size: 1/50# Warehouse Loc.: R507 Class: PRODUCE

Inventory | Cost/Price | Vendor | History | Promotions | Food Show Promotions | **Kits** | Special Pricing | Sale Pricing | Future Pricing | Break I

Kit Ingredients

Ingredients to produce: TUB

Ingred. Item #	Ingredient Description	UOM	Real Cost	Land Cost	Qty. Req.	Ext. Real	Ext. Landed
50705	POTATOES 9OCT.	CASE	9.0000	9.0000	1.0000000	9.0000	9.0000
30200B	loose gallons blue plate mayo	PC.	4.9025	4.9025	2.0000000	9.8050	9.8050
30610B	loose gallons dill relish	PC.	4.9175	4.9175	1.0000000	4.9175	4.9175

Add Delete Ingredient Costs Update All Update Item Total Kit Cost 23.7225 23.7225 Real Cost Landed Cost

102 records

Add Item **Copy Item** Delete Item OK Cancel Apply

entrée Version 3.6.8 Features



Brand Maintenance “Internet Image Search” Button Added

Because **entrée.NET** and the **Electronic Order Pad** are very visual and both provide the means to display item images and more recently Brand images, this feature has been added to help you quickly find the appropriate Brand image.

This search feature in the main **entrée** system now allows you to directly open an Internet image search utility without needing to first view the Brand Maintenance Image Library.

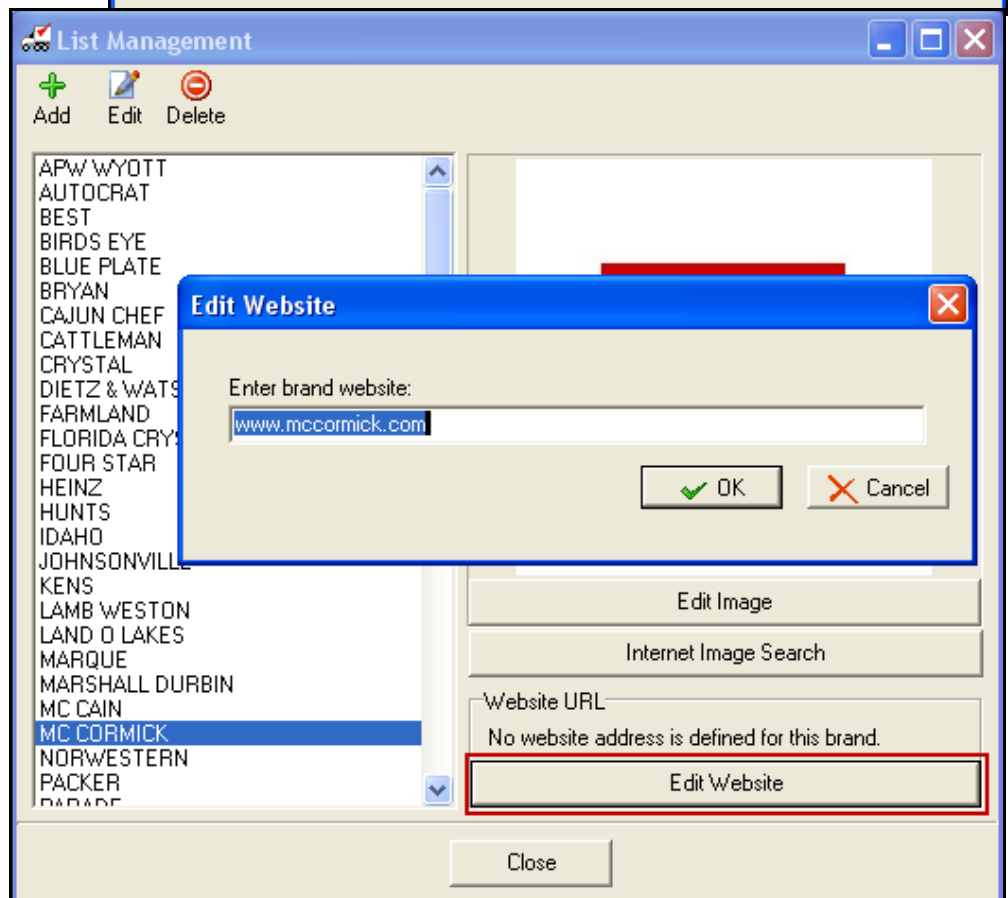
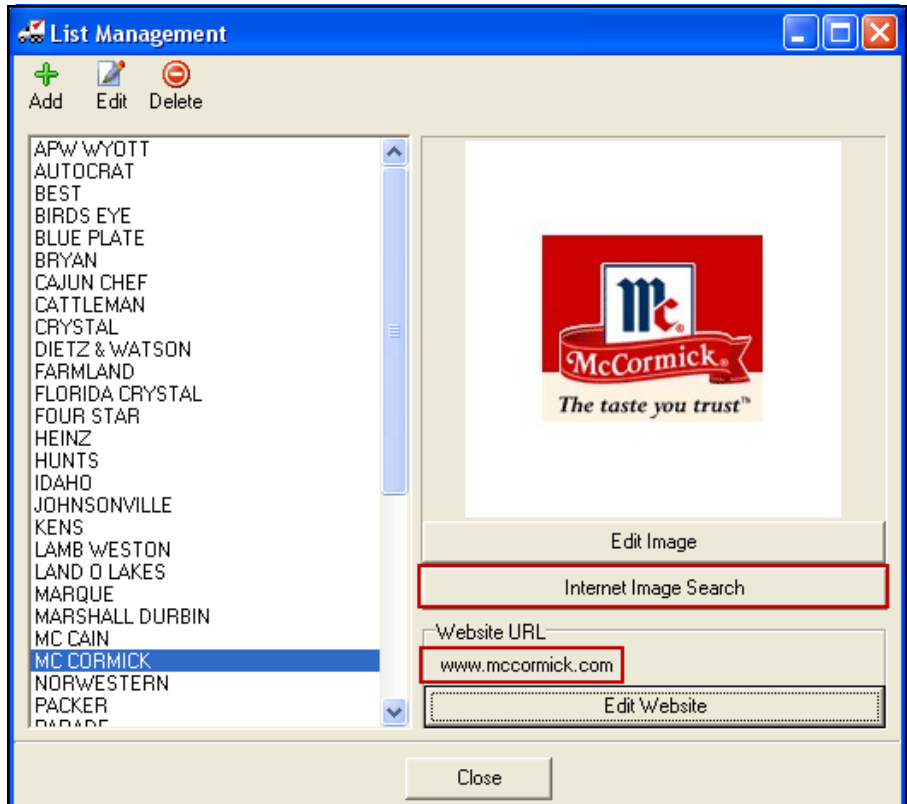
The **Internet Image Search** button has been updated to automatically fill in the search terms using the currently selected Brand Name and search using the Brand’s **Website URL**, if it has been defined.

A message is displayed if no **Website URL** has been entered.

To define the Website URL:

- Click the **Edit Website** button.
- Enter the website’s address beginning with “www” in the **Enter brand website:** text box.
- Click **OK**.

See the example on the right.



entrée Version 3.6.8 Features



entrée.DOC (Document Scanning) Features

The Print Loading Sheet process in the "Scan Loading Sheets" dialog is now compatible with Windows font scaling on computers with Vista and Windows 7 operating systems.

entrée.QB (QuickBooks Interface) Features

entrée Close Purchase Order Procedure Can Post to entrée.QB Accounts Payable.

entrée.MW (Multi-Warehouse) Features

Transfer / Save Processes Display Progress Bar

- To provide you with feedback during the operation of the Transfer / Save processes a progress bar will be displayed.
- This feature will also ensure that the operator cannot activate the "OK" button (or any other buttons on the transfer form) once the Save process has been started.

Save Process Hides "OK" Button

- The Save process has been modified so that the "OK" button is hidden in order to prevent you from double-saving the transfer.

Order Guide Mode "Escape" Button Change

- Now pressing the "Escape" twice in Order Guide mode will **no longer cancel** the entire operation.

entrée.NET Version 3.3.5 & Electronic Order Pad Features



System Option to Display Manufacturer's Item Numbers

How Manufacturer's Item Numbers are set up:

1. In **entrée** you must first define the manufacturer and their image in the Manufacturer Maintenance utility (requires **entrée** version 3.6.7 or later).
2. Now select the items in Inventory Maintenance and go to the **Vendor** tab and add the Manufacturer ID and Manufacturer Item Number to the item.

Inventory File Maintenance

Item Number: 10105 Description: CHICKEN NUGGETS Brand Name: PARADE

Unit of Measure: CASE Pack Size: 1/15# Warehouse Loc.: F101 Class: FROZEN CHICKEN

Inventory | Cost/Price | **Vendor** | History | Lots | Promotions | Food Show Promotions | Kits | Special Pricing | Sale Pricing | Future Pricing

Auto P.O. Parameters: Purchase Multiple: 2.00 APD Weeks: 3.43

Special Reorder Definitions:

Months	Order Pt.	Reorder Qty.	Months	Order Pt.	Reorder Qty.
	0	0		0	0
	0	0		0	0

Vendor Information:

Vendor #	Vendor Name	Vendor Item Number	Seq #	Last Cost	Last Purchase
ADH10	ANTHONY DAVIDS HIGHLAND CO.		0	24.9000	06/15/11
* BCF10	BRYSON CHICKEN FARMS		0	24.9000	06/15/11

Primary Vendor: BCF10

Manufacturer ID: **TYSN01** TYSON FOODS Manufacturer Item Number: **TYSN018035**

103 records

Add Item Copy Item Delete Item OK Cancel Apply

3. The **entrée.NET Export Utility** will send this new information to **entrée.NET** where it will also be picked up by the **Electronic Order Pad** application.
4. Now you must enable this feature in **entrée.NET**:
 - a. Go to the **Setting** tab click the **Options** button.
 - b. Scroll down to the **Website** section.
 - c. Set the '**Display Manufacturer Item Number in item Catalog.**' to "Yes".

Home | Customer Setup | Salesperson Setup | Manager Setup | Messages | Specials | Website | Prospects | Reports | **Settings**

Search: Enter search terms Search Clear

Option Description Current Setting

Display Manufacturer Item # beneath item description.	Yes
---	-----




Promotions

entrée.NET Version 3.3.5 & Electronic Order Pad Features



System Option to Display Manufacturer's Item Numbers

In the **entrée.NET Catalog** screen the **Manufacturer's Item Number** will be displayed below Description Line 1 in the Description column (outlined in red in the top image).

Qty	Item #	Description	Brand	Pack Size	Unit	Weight	Unit Price	Image	
Class: FROZEN CHICKEN									
0	10105	CHICKEN NUGGETS Manufacturer #TYSN018035	PARADE	1/15#	CASE		\$33.80		
0	10117	CHICKEN STRIPS BREADED Manufacturer #TYSN018045	PARADE	1/10#	CASE		\$30.60		
Class: FRENCH FRIES									
0	10310	RUSSETTE SUPERDRY SHOESTRING FF Manufacturer #MCAN56092	LAMB WESTON	6/6#	CASE	36.0000	\$24.20		

In the **Electronic Order Pad** application **Catalog** screen the **Manufacturer's Item Number** will be displayed below Description Line 1 in the Description column (bottom image).

Catalog				
Class	Brand	Item #		
10105	CASE	CHICKEN NUGGETS Manufacturer #TYSN018035	27.89	
10117	CASE	CHICKEN STRIPS BREADED Manufacturer #TYSN018045	26.88	
10310	CASE	RUSSETTE SUPERDRY SHOESTRING FF Manufacturer #MCAN56092	21.25	
10334	CASE	FRIES CRINKLE CUT Manufacturer #MCAN56090	11.09	

entrée.NET Version 3.3.5 & Electronic Order Pad Features



New Catalog Item# Tab Lists All Items & Disables Grouping

In the **entrée.NET Catalog** (top image) click the **Item#** tab to view and sort all items in ascending or descending order by item number. The **Electronic Order Pad** app will perform the same way in the **Catalog** screen (bottom image) when the **Item#** tab is tapped.

Qty	Item #	Description	Class	Brand	Pack Size	Unit	Weight	Unit Price
0	50915B	loose packs cello carrots	PRODUCE	PACKER	1#	PC.		\$0.30
0	50915	CARROTS CELLO	PRODUCE	PACKER	48/1#	CASE		\$13.40
0	50705	POTATOES 90CT.	PRODUCE	IDAHO	1/50#	CASE		\$11.50
0	50310	TOMATOES 5X6	PRODUCE	BEST	25#	CASE		\$23.20
0	40707	EGGS LARGE CARTON 30DOZ	EGGS	LAND O LAKES	1/30DOZ.	CASE		\$40.80

Catalog				
Search by Description		Search in all available items.		All Items <input checked="" type="checkbox"/>
Class	Brand	Item #		
		Group		List
Item #	Unit	Description	Unit Price	
10105	CASE	CHICKEN NUGGETS Manufacturer #TYSN018035	27.89	
10117	CASE	CHICKEN STRIPS BREADED Manufacturer #TYSN018045	26.88	
10310	CASE	RUSSETTE SUPERDRY SHOESTRING FF Manufacturer #MCAN56092	21.25	
10334	CASE	FRIES CRINKLE CUT Manufacturer #MCAN56090	11.09	
10337	CASE	FRIES REG 3/8" CUT Manufacturer #MCAN56012	11.84	

entrée.NET Version 3.3.5 & Electronic Order Pad Features



Support for Matrix Code Pricing (requires entrée version 3.6.8 or later)

If you are currently using Matrix Code Pricing in the main **entrée** system and would like to add the power of the latest technology to your company, now is the time to do it.

With this latest feature our **entrée.NET** website / ordering system and the **Electronic Order Pad** iPad app for your sales force now have all the features needed to support Matrix Code Pricing. Get ready to meet your sales goals.

Matrix Code Pricing Overview

Matrix code pricing requires distributors to assign matrix codes to each of their item's and to each of their customers in the main **entrée** system.

Markup percentages are then defined, using the **entrée** Price Matrix utility. The markup % of the item is determined by the percentage value found at the point in the matrix where the customer and item matrix code intersect. The markup % is then applied to item's base cost to determine the unit price.

Customer Matrix Codes ==>

Item Matrix Codes	AA	BB	CC	DD	EE					
11	5.00	10.00	15.00	20.00	25.00					
22	7.50	12.50	17.50	22.50						
33	9.00	14.00		24.00	29.00					

Buttons: Setup, Clear 0.00% Entries, OK, Cancel, Apply

entrée 3.6.8 Data Export to entrée.NET Supports Matrix Code Pricing

The **entrée.NET Export Utility** in the main **entrée** system can now export the data required to support Matrix Code Pricing and update **entrée.NET** and **Electronic Order Pad**.

Innovative Software Design +
Food Distribution Expertise =
entrée



NECS began in 1987 with its sole mission to produce top quality software for foodservice distributors. At that time, company president, Chris Anatra had determined that the software market was severely lacking in specialized software to address the needs of wholesale food distributors, especially those dealing with meat, seafood, produce, cheese as well as full line distributors.

The only products available at that time were needlessly complex, difficult to use, required expensive computer hardware costing into the six figures, and still did not meet all the needs of the foodservice distributor.

During this time period, the computer industry was beginning its move from large mainframe and minicomputer systems, to the more economical personal computer such, as the IBM PC. Chris Anatra, president of NECS, and the original developer of the NECS software, saw the opportunity to design a system based on the Microsoft and networking technologies available at that time. By adapting to this new technology early, it turned out to be a brilliant move that set NECS to become the leader in food distribution software. NECS was able to provide a comprehensive, easy-to-use software package, at an economical price.

Adapting to new technology early, and constantly providing new features for our user base, continues to be our company mission.

Over the years, the system has evolved into [entrée®](#), a comprehensive Windows* application with more than three million lines of programming source code.

To date, almost 1,500 wholesale food distributors have decided that the NECS **entrée** system is the best product to meet their demanding needs. Our large network of satisfied customers makes this decision even easier.

Foodservice distributors which run their operations on NECS computer software are more profitable and operate more efficiently on reduced staffs. This leaves NECS with an enthusiastic user base, who readily recommends NECS software to other wholesale food distributors.

NECS customers range in size from smaller distributors with sales revenues of a few million per year, up to distributors with sales approaching \$200 million per year. The average size NECS customer has sales of \$25 million per year, and requires about 20 workstations.

entrée and NECS Food Distributing System are trademarks of NECS, Inc. in the United States and/or other countries. NECS, Inc. may have patents, patent applications, trademarks, or copyrights covering subject matter in this document. Except as expressly provided in any written license agreement from NECS, the furnishing of this document does not give you any license to these patents, trademarks, or copyrights.

*Microsoft, Windows, Windows NT, Windows 2000, Windows ME, Windows XP, Windows 7, Windows Vista and Internet Explorer are either registered trademarks or trademarks of the Microsoft Corporation in the United States and/or other countries.

*Intuit and QuickBooks are trademarks and service marks of Intuit Inc., registered in the United States and other countries.

*iPad is a registered trademark of Apple Inc.

*Dot Foods is a registered trademark of Dot Foods, Inc.

*ANDROID and Google are registered trademarks of Google Inc.

*Constant Contact is a registered trademark of CONSTANT CONTACT, INC. Corporation.

*Wavelink is a registered trademark of Wavelink Corporation.

NECS, Inc.

168 Boston Post Road Suites 6 & 7

Madison, CT 06443

Phone: 203.245.3999

Fax: 203.245.4513

www.necs.com

The logo for 'entrée' is displayed in a dark red font. A red checkmark is positioned above the first 'e'.