



Features Flash

December 22, 2010

entree version 3.5.13a

entree.NET 3.2.1

entree.NET 3.2.3

entree.AP

Table of Contents



entrée Version 3.5.13a Features

System Option #171	3
Create / Change Invoice Options	3
Physical Adjustments By Class	4
Inventory Count Sheets Report	4

entrée.NET Version 3.2.1

Export Utility Updates	5
Import Orders Scheduler Option	5
Salesperson Unit Price Warning	6
Case Count Feature	6
New Website Design Tools:	
Website Color Schemes	7
Website Banner Editor	7
Updated Password Controls:	
Distributor Password Change	8
Distributor Password Viewing	8
Image File Size Increased	8
Restricted Items Feature	9
New Default Order Guide Feature for .NET Customers	9
Min / Max Order Quantity Warning	10
Enabling Min / Max in entrée.NET	11

entrée.NET Version 3.2.3

New Website Sort Options	11
“Forgot Password” Feature Extended	12

entrée.AP Version 3.5.13a

Accounts Payable Company Maintenance	12
--------------------------------------	----

About NECS	13
------------	----

entree[®]

Features Flash

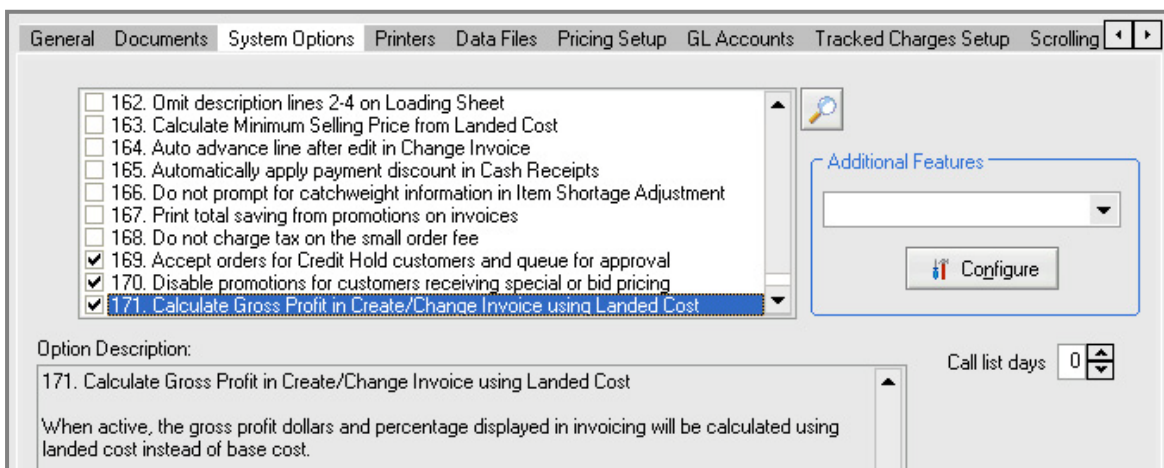
December 22, 2010



New Features for entree V 3.5.13a

entree System Option #171

"Calculate Gross Profit in Create/Change Invoice using Landed Cost" which, as it says, will change the calculation of Gross Profit in Invoicing to be based off of Landed Cost rather than Base Cost. Use menu path: System > Preferences > System Options > scroll down to #171 and check the box.



entree Create/Change Invoice Options

Updated the status panel to provide options for showing "Last Sale Date", "Last Price" and "Last Profit %" for the previous three sales.

These will be shown as "Hist. Last Sale Date 1" through "Hist. Last Sale Date 3", "Hist. Last Sale Price 1" through "Hist. Last Sale Price 3" and "Hist. Item Gross Profit % 1" through "Hist. Item Gross Profit % 3".

Note: The "previous three sales" are established by looking directly at the Invoicing data using the Invoice Date of the current invoice as a starting point.

Line:	1 of 1
On Order:	27
Brand:	HOSTESS
Pack:	12/20
On Hand:	424.00
Weight:	0.0000
Base:	
Last Sale 1:	12/16/10
Item Profit % 1:	15.15%
Last Sale:	12/16/10

entrée Physical Adjustments by Class



Added the ability to total individual weight values "on the fly" when adjusting a non-"LB." catchweight item. In the "Physical Weight" edit field simply click the ellipsis ("...") button to open the same edit dialog used to enter catchweight information. The number of input fields provided is based on the value entered in the "Physical Quantity" field so make sure that this is updated before you try to total up the weight detail.

The 'Physical Adjustments by Class' window shows the following data:

Item #	UOM	Description	OH Qty	OH Wgt	Phys Qty	Phys Wgt
11050	CASE	PSF PK LOIN BNLS DWN HOME	-12	310.0000	7	50.0000
BEEF1	CASE	GROUND BEEF PATTIES	0	0.0000	12	0.0000
LOTP	PC	Plain Lot Item, not weighted				
TEST1	CASE	TEST CASE ITEM				
TEST2	PC	TEST PIECE ITEM				

The 'Enter Weights - Weight Entry' dialog box shows:

- Item: 11050 - PSF PK LOIN BNLS DWN HOME
- Physical Qty: 7.00
- Unit of Measure: CASE
- Min. Weight: 5.00 lbs.
- Max. Weight: 64.00 lbs.
- Total Weight: 0.00

entrée Inventory Count Sheets Report

An option was added to print individual catchweight lines for each catchweight item (to match the totaling feature added in Physical Adjustments by Class). The number of lines printed will be equal to the item's "True On Hand" inventory (On Hand plus Allocated) plus an addition 5 lines to accommodate any variance in the on hand quantity.

Date: 12/21/10
Time: 10:38 AM

Madison Distributors
Inventory Count Sheet - Style: Inventory

Page: 1

Item Number	Description Line 1	Unit of Measure	On Hand Quantity	On Hand Weight	Allocated Quantity	Warehouse Location	Physical Count
20100	BEEF GROUND 81/19	CASE	48	4,000.00	1	R201	

The 'Inventory Count Sheet' dialog box has the following settings:

- Predefined style: Inventory
- Group report by: User defined
- Sort report by: Item number
- Only show items with activity this period
- Print line for weights below catchweight items.

New Features for entrée.NET V 3.2.1



entrée.NET Export Utility Updates

1. Revised the data export utility so that "Make From" items will be provided with "Available to Make" information. This looks up the current inventory of the specified "Make From" item and applies the defined "Yield" value to determine the maximum amount of the "made" item that can be produced.

A screenshot of a dialog box titled '"Make From' Information'. It contains three input fields: 'Item Number' with the value '20140', 'Yield %' with the value '80', and 'Available to Make' with the value '161178.38'.

2. New "Advanced Options" dialog button seen in export utility image above allows for clearing out selected sections of the new change tracking file. Check the desired table data in the Advanced Options dialog box shown on the right. Close and run the "Standard Update" export.

These advanced options eliminate the need to perform a DOT command to clean out the table if any issues arise with the change detection. Use menu path: Invoicing > entrée.NET > Export to entrée.NET > Advanced options.

A screenshot of a dialog box titled 'Advanced Opt...'. It features a section titled 'Change Tracking' with four checkboxes: 'A/R', 'Special Prices', 'Level Prices', and 'Items' (which is checked). Below these is a 'Clear Selected' button and a 'Close' button at the bottom right.

entrée.NET Import Orders Scheduler Option

A commonly requested feature by our entrée.NET customers has been to provide the ability for new orders to be automatically imported into your main entrée system. You can now accomplish this with this latest version.

Access to this feature is provided by a new "Order Import" option which has been added to the "Export Task" option list on the Add Task dialog.

Note: When an order has successfully been imported by this feature then a notification e-mail will be sent to the e-mail address(es) that are configured to receive order notifications.

A screenshot of the 'entrée.NET Scheduler R2' application window. An 'Add New Task' dialog box is open, showing fields for 'Company' (Madison Distributors), 'Export Task' (Order Import), 'Order Taker', 'Start' (12/20/2010), and 'Repeats every' (1 Hour(s) at 1:50:00 PM). There are 'OK' and 'Cancel' buttons at the bottom.

Salesperson Unit Price Warning



There is a new "Display "Unit Price is below Base Cost" warning." system option. To enable this new feature in entrée.NET go to the Settings tab. Select the Options button and go to the Salespeople section. Then set the "Display Unit Price is below Base Cost" warning" option to Yes.

Allow salesperson to re-assign prospects.	No
Display "Unit Price is below Base Cost" warning.	Yes
Setting this option to "NO" will disable the display of warnings when the salesperson enters a unit price	

The warning message is displayed when the salesperson enters a unit price that is below the item's Base Cost as shown in the image below. The number in the % column will also turn red.

Qty	Image	Item #	Description	Brand	Pack Size	Unit	Weight	Unit Price	%	Base Cost
0		20138	ROAST BEEF MARQUE'S PREMIUM	MARQUE	2/12-15#	CASE	27.0000	\$15.00	\$41.03	\$2.34
2		20145	SPECIAL TRIM	IBP	24-14oz	LB.	1	\$0.99	-43.02	\$1.74
0		30132	MUSHROOMS STEMS &							\$31.70

entrée.NET Case Count Feature

To enable this new feature in entrée.NET go to the Settings tab. Select the Options button. Go to the Order Entry section. Set the "Show 'Case Count' in order entry" system option to "Yes".

The new "Case Count" feature will display a sum of quantities entered for an order below the "Estimated Total" in the cart along the right hand side of the screen.

In the shopping cart image on the right you see "Total Cases:" with the quantity.

Option Description	Value
Max order days	
Order cutoff time	
Order cutoff time applies to day of delivery	
Restrict delivery dates to customer route information.	
Show item description line 2.	
Show item description line 3.	
Show item description line 4.	
"Standard Order" item grouping method	
Display min/max quantity warnings	
Show "Case Count" in order entry.	<input checked="" type="checkbox"/>

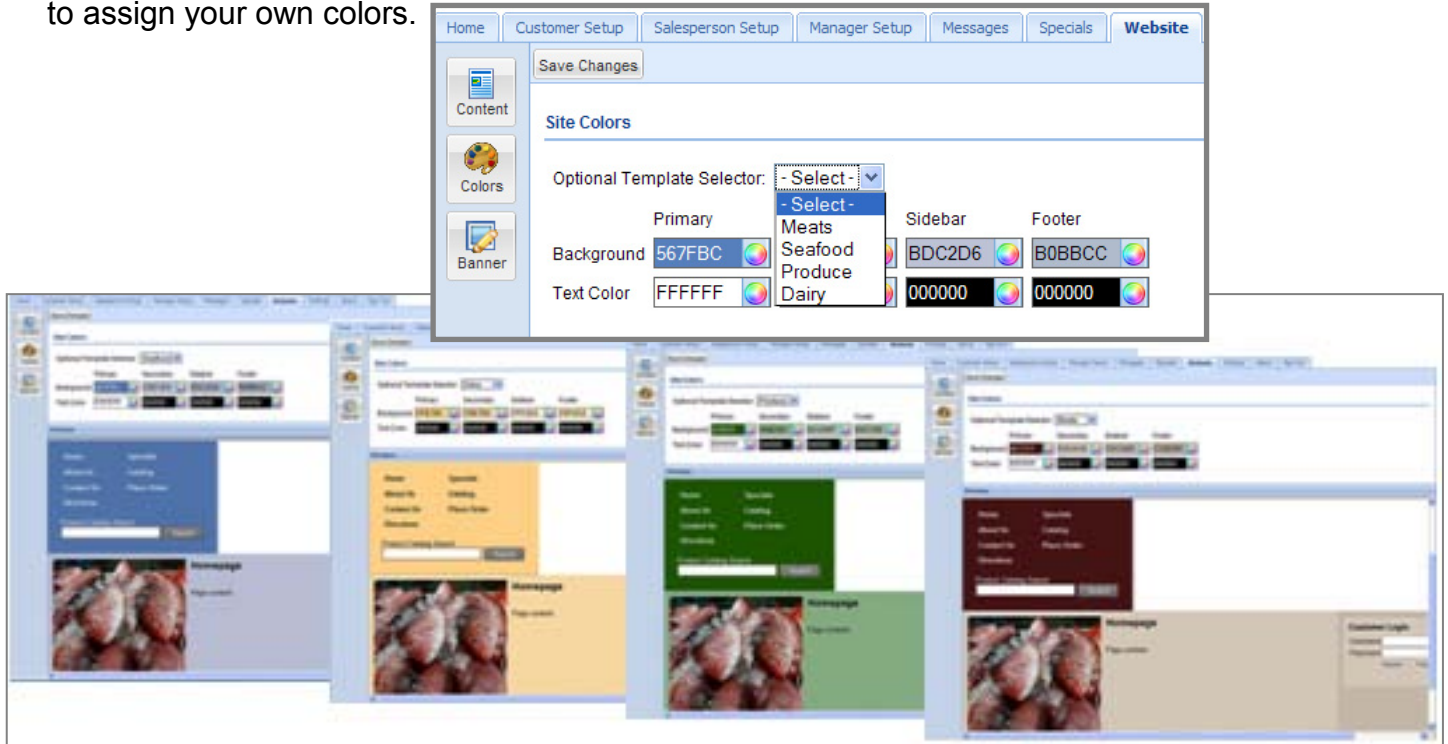
Item	Qty	Unit Price	Total
(20658) SAUSAGE FRESH ITALIAN*	1	\$1.95/LB.	\$9.75
(20659) SAUSAGE FRESH HOT	1	\$1.45/LB.	\$7.25
(40706) EGGS LARGE CARTON 15DOZ	1	\$21.00/LB.	\$21.00
(30305) VEGETABLE OIL CLEAR FRY	2	\$10.50/LB.	\$21.00
(20138) ROAST BEEF MARQUE'S PR...	2	\$15.00/LB.	\$810.00

New entrée.NET Website Design Tools



Website Color Schemes

A new "Template Selector" option has been implemented to define Website Colors. This allows distributors to select a website color scheme from four pre-defined styles as shown in the image below. You can still use the Background and Text Color selectors to assign your own colors.



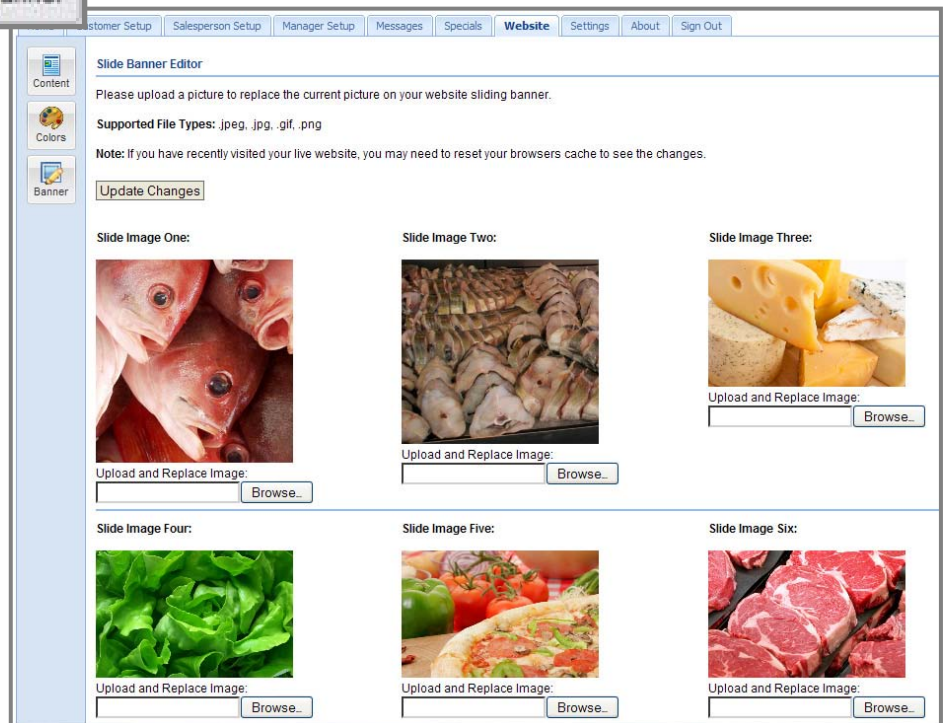
Website Banner Editor



This new tool is accessed by clicking on the "Banner" button in the "Website" tab in entr e.NET. The new "Banner" editor option allows distributors to upload up to six images of their own to be used in the scrolling image banner on the website.

Note: You **must** have six images loaded into the banner editor.

If you have less than six of your own images and do not want to use the stock images, upload a few of your images twice to fill the empty image slots.



entrée.NET Updated Password Controls

Distributor Password Change

Distributors now have the ability to change their entrée.NET login password.

Note: Changing your password **will require you to enter the new password in entrée** by manually running the entree.NET export utility.



Home Customer Setup Salesperson Setup Manager Setup Messages Specials Website **Settings** About Sign Out

Save Settings

General

Options

Grids

Account

Below you can change the password for your distributor account.

NOTE: Changing your password here will require you to re-run the entree.NET export utility and enter your new password before you can import orders.

New Password

Distributor Password Viewing

For the Distributor this release also introduces a new password storage system which will allow you to be able to view customer and salesperson account passwords. The new system uses a key based encryption system to maintain a level of security but still allow for viewing the passwords.

Note: Passwords will **NOT** be visible until they have been converted to the new storage format. A process has been put in place to convert the passwords as customers and sales people login. So there will be some delay before all passwords are viewable.

ANN10 - ANN SAND ENTERPRISES

entrée.NET Account

Username

Password

entrée.NET Image File Size Increased

The maximum image size supported by entrée.NET has been increased to 550 x 550 pixels. Your customers may now click on item images in the grid or on the "Item Information" pop-up window to view a larger version of the product image. Images can be added to items in the main entrée system via the "Misc2" tab in "Inventory File Maintenance."

Use menu path:
Invoicing > entrée.NET > Export to entrée.NET
to transfer the new larger images from entrée to entrée.NET.

Note: Distributors **must** run a "Standard Update" export and check off the "Resend item and class images" option to send the new images to entrée.NET.

entrée.NET Export Utility R2

entrée.NET Version 3 Export Utility

This utility is used to export your data to the entrée.NET server.

Standard Update

Standard Update

Catalog Update

On Hand / Credit Hold Update

13 Month Sales History Update

This option will export 13 months of sales history information. Use this option if you are experiencing significant sales history changes. It is recommended to run this update once a day or after significant item, customer, or price changes.

Advanced options...

Cancel << Back Next >>

entrée.NET Restricted Items Feature



You can now define items to be "restricted", as a general rule, from entrée.NET, so that they will not appear to the customer when they are placing their order online, searching for items, etc. However, what makes this enhancement unique is that if the customer does have the item defined in the Customer Special Price/Standard Order file, they will still be allowed to purchase it, and it will be displayed to them when placing an online order. You can use this feature for situations such as a special order item, that you purchase for a specific customer (or group of customers), that your normal customer base is not allowed to order.

An item may be set as restricted by checking the box for "Restricted item" on the ".NET" tab in "Inventory File Maintenance".

The screenshot shows the 'Inventory File Maintenance' window with the following fields and options:

- Item Number: 20138
- Description: ROAST BEEF MARQUE'S PREMIUM
- Brand Name: MARQUE
- Unit of Measure: CASE
- Pack Size: 2/12-15#
- Warehouse Loc.: R201
- Class: BEEF

Navigation tabs include: Promotions, Food Show Promotions, Kits, Special Pricing, Sale Pricing, Future Pricing, Break Pricing, Status, Misc 1, Misc 2, and .NET (highlighted with a red box).

Options in the .NET tab:

- Exclude item from export.
- Restricted item: (highlighted with a red box)

Item Tags section includes a search field, a 'Delete' button, and a 'Tag' input field.

New Default Order Guide Feature for .NET Customers

A new "Default Order Guide" feature allows customers to select a custom guide to be loaded automatically when clicking on the "Standard Order" tab.

When saving a custom order guide customers can now check off "Make this the default guide for 'Standard Order'" to have that guide automatically load when they log in to entrée.NET.

The screenshot shows the 'Standard Order' tab with a list of items and a 'Save Order Guide' dialog box.

Seq.	Category	Item #	Description	Class	Brand	Pack Size	Unit	Weight
0	FROZEN CHICKEN	10117	CHICKEN STRIPS BREADED	FROZEN CHI	PARADE	1/10#	CASE	
10	FRENCH FRIES	10310	RUSSETTE SUPERDRY SHOESTRING	FRENCH FRIE	LAMB WEST	6/6#	CASE	
20	PORK	20301	BACON				CASE	
30	CONDIMENTS	30001	KETCH				CASE	

The 'Save Order Guide' dialog box is open, showing:

- Enter a name for this order guide: MyDefault
- Make this the default guide for "Standard Order"
- Buttons: OK, Cancel

entrée.NET Min / Max Order Quantity Warning



For your customers placing online orders with entrée.NET, you can now define a "minimum" and "maximum" quantity that they are allowed to order. This feature will allow you to enforce minimum order quantities for specific items as well as maximum order quantities. You can also create special exceptions to this rule by individual customer.

The minimum and maximum quantity numbers must be defined in the main entrée system for the item or customer. For items go to "Inventory File Maintenance" find the desired item. Then go to the ".NET" tab Order Entry section and set your min and max quantities.

Inventory File Maintenance

Item Number: 20138 Description: ROAST BEEF MARQUE'S PREMIUM Brand Name: MARQUE

Unit of Measure: CASE Pack Size: 2/12-15# Warehouse Loc.: R201 Class: BEEF

Promotions: Food Show Promotions Kits Special Pricing Sale Pricing Future Pricing Break Pricing Status Misc 1 Misc 2 .NET

Exclude item from export.
 Restricted item

Order Entry

Min. Qty: 5.00
Max. Qty: 15.00

Item Tags

Tag: Gluten Free

To use this feature for specific customers the minimum and maximum quantity numbers must be defined in the main entrée application. Go to the "Customer File Maintenance" "Special Pricing" tab. Select the desired item's special price in the Special Price Information section. Then click the "Edit miscellaneous ..." button.

The Edit Special Prices Miscellaneous Parameters dialog box will display. In the .NET section check "Enable min/max override" and enter the min and max quantities.

Edit Special Price Miscellaneous Parameters

Item: 20138 - ROAST BEEF MARQUE'S PREMIUM
Customer: ANN10 - ANN SAND ENTERPRISES

Custom Item Description

Description: ROAST BEEF MARQUE'S PREMIUM
Description #2:
Description #3:
Description #4:

.NET

Enable min/max override:
Min. Qty: 5.00
Max. Qty: 15.00

Next, you must enable the min/max feature in entrée.NET. The details for this update are on the next page.

Enabling Min/Max in entrée.NET

Login to entrée.NET go to the Settings tab. Select the Options button. Go to the Order Entry section. To enable the "Display min/max quantity warnings" option change the setting to YES.



Option Description	Current Setting
Max order days	0
Order cutoff time	12:00 AM
Order cutoff time applies to day of delivery	Yes
Restrict delivery dates to customer route information.	No
Show item description line 2.	No
Show item description line 3.	No
Show item description line 4.	No
"Standard Order" item grouping method	Class
Display min/max quantity warnings	Yes

entrée.NET will then display a warning message when ordering quantities above or below the specified values.

Note: This feature serves as a warning only and does **not** prevent an order from being completed by the customer or salesperson.

Qty	Item	Description	Unit	Price
0	loose pack 10# ground beef	IBP	1/10#	PC. 10.0000* \$1.30
0	STEAK STRIPLO			\$1.90
1	ROAST BEEF MARQUE'S PREMIUM	MARQUE	2/12-15#	CASE 27.0000* \$15.00

New Features for entrée.NET V 3.2.3

New Website Sort Options

There is a new system option to control which column is used as the default sorting column when displaying items in the entrée.NET website catalog called "Default item sort column."

To implement this feature go login to entrée.NET and go to the Settings tab. Select the Options button and scroll down to the Website section. Click the drop down arrow and select the desired sort field from the list.

Website

Default item sort column.

Designates the column to use by default when sorting the item listing in

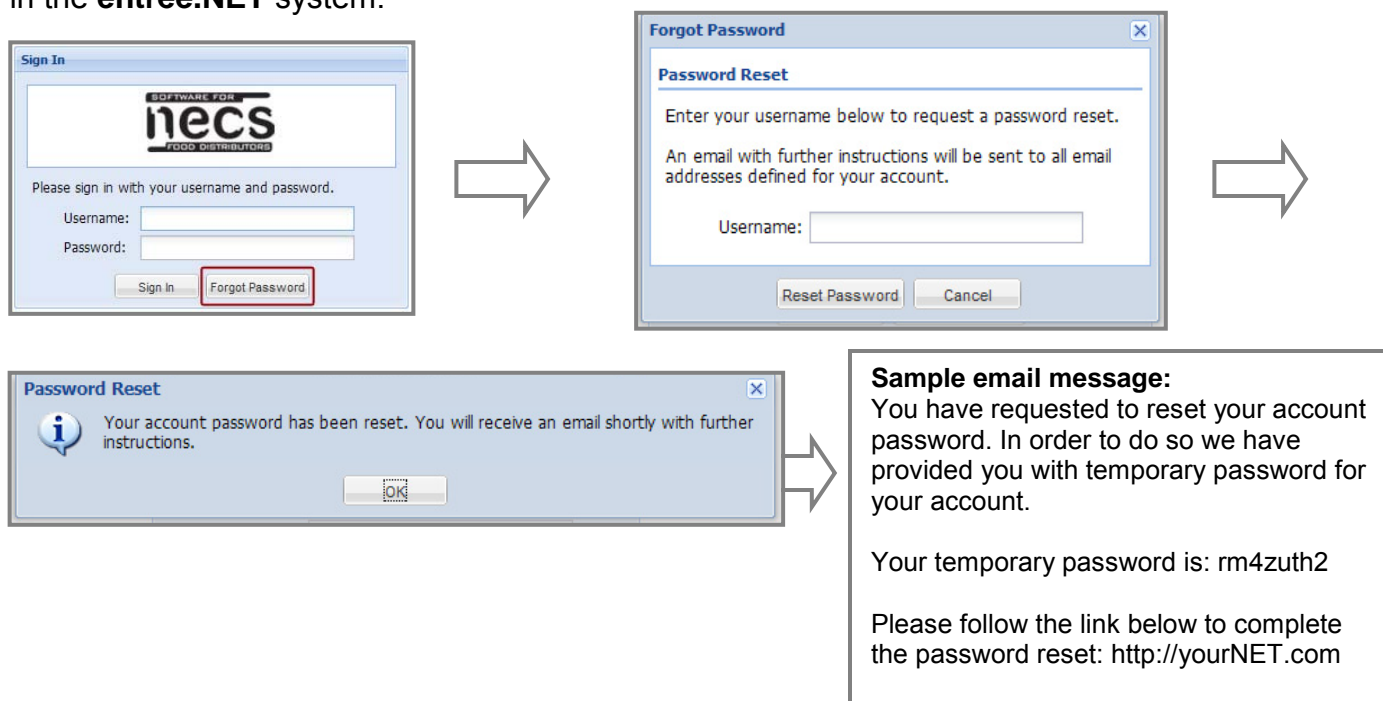
- Item #
- Description
- Brand
- Class
- Unit MS.

“Forgot Password” Feature Extended



For distributors who do not have the entree.NET website module a "Forgot Password" button has been added to the login screen which allows customers and salespeople to initiate an automatic password reset procedure.

The user will enter their username in the password reset dialog box. This action will trigger an email sent to their account email address. This email will contain a temporary password and link to the password reset page. The customer will enter their username, temporary password and their new password here. If all the information has been entered correctly, their password will be reset in the **entrée.NET** system.

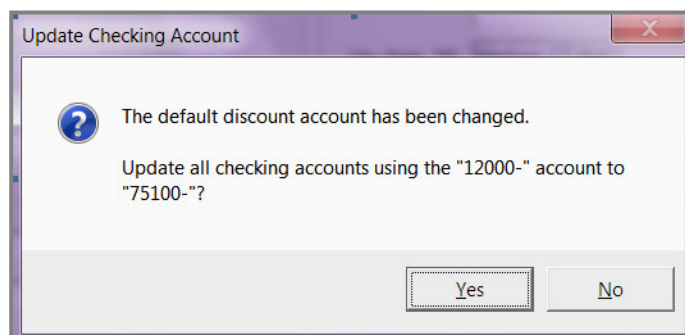


New Features for entrée.AP V 3.5.13a

entrée.AP Accounts Payable Company Maintenance

The Company Maintenance utility has been updated to provide a means to make changes to the default Discount and/or Adjustment account assignments that can be applied to existing Checking Accounts.

Note: When making a change to either of these accounts you will now be asked if you would like to update all checking accounts which use the changed value(s).



Innovative Software Design +
Food Distribution Expertise =
entrée



NECS began in 1987 with its sole mission to produce top quality software for foodservice distributors. At that time, company president, Chris Anatra had determined that the software market was severely lacking in specialized software to address the needs of wholesale food distributors, especially those dealing with meat, seafood, produce, cheese as well as full line distributors.

The only products available at that time were needlessly complex, difficult to use, required expensive computer hardware costing into the six figures, and still did not meet all the needs of the foodservice distributor.

During this time period, the computer industry was beginning its move from large mainframe and minicomputer systems, to the more economical personal computer such, as the IBM PC. Chris Anatra, president of NECS, and the original developer of the NECS software, saw the opportunity to design a system based on the Microsoft and networking technologies available at that time. By adapting to this new technology early, it turned out to be a brilliant move that set NECS to become the leader in food distribution software. NECS was able to provide a comprehensive, easy-to-use software package, at an economical price.

Adapting to new technology early, and constantly providing new features for our user base, continues to be our company mission.

Over the years, the system has evolved into [entrée®](#), a comprehensive Windows* application with more than 3 million lines of programming source code.

To date, almost 1,500 wholesale food distributors have decided that the NECS entrée system is the best product to meet their demanding needs. Our large network of satisfied customers makes this decision even easier.

Foodservice distributors which run their operations on NECS computer software are more profitable and operate more efficiently on reduced staffs. This leaves NECS with an enthusiastic user base, who readily recommends NECS software to other wholesale food distributors.

NECS customers range in size from smaller distributors with sales revenues of a few million per year, up to distributors with sales approaching \$200 million per year. The average size NECS customer has sales of \$25 million/year, and requires about 20 workstations.

*Microsoft, Windows s a registered trademarks or trademarks of the Microsoft Corporation in the United States and/or other countries.

*Intuit and QuickBooks are trademarks and service marks of Intuit Inc., registered in the United States and other countries.

id NECS Food Distributing System are trademarks of NECS, Inc. in the United States and/or other countries. NECS, Inc. may have patents, patent applications, trademarks, or copyrights covering subject matter in this document. Except as expressly provided in any written license agreement from NECS, the furnishing of this document does not give you any license to these patents, trademarks, or copyrights.

NECS, Inc.
168 Boston Post Road Suites 6 & 7
Madison, CT 06443
Phone: 203.245.3999
Fax: 203.245.4513

www.necs.com

entrée