



Features Flash

October 20, 2011

entrée version 3.6.4

entrée.DOT

entrée.FS

ELECTRONIC LOADING SHEET

Table of Contents



entrée Version 3.6.4 Features

Inventory Movements Feature	3
Security Management Enhancements	4
NECS_Err.log file for Terminal Services	4
FTP File Transfers Passive Option	4

ELECTRONIC LOADING SHEET

Picking Labels Support in entrée	5
New Support for Reporting in entrée	5
Electronic Loading Sheet Preview	5 - 6

entrée.FS - Food Show Module

New entrée Food Show Orders System Options	7
--	---

entrée.DOT - DOT Foods Interface

Purchase Order Export Update	8
DOT Foods Historical Pre-Order Data Archival Process	8

About NECS

9

entree® Features Flash



entree Version 3.6.4

New entree Inventory Movements Feature

The Status tab in Inventory File Maintenance has been updated to add a button to access the new Inventory Movements feature. This feature will report on all movements of the currently loaded inventory item.

The screenshot shows the 'Inventory File Maintenance' window with the following details:

- Item Number: 10500
- Description: BROCCOLI SPEARS
- Brand Name: CODE
- Unit of Measure: CASE
- Pack Size: 12/2#
- Warehouse Loc.: F105
- Class: FROZEN VEG

Navigation buttons include: Purchases, Allocations, On Order, Physical Adj., FIFO Recv., and **Movements** (highlighted with a red box).

Filters are available to restrict the output in the “Show” drop down menu (shown in image below) to either All, Sales, Purchases, or Adjustments. You have the option to restrict the output by entering a specific date range in the “Dates from: to:” field.

The screenshot shows the 'Inventory File Maintenance' window with the 'Item Movements' section active. The 'Show' dropdown menu is open, displaying the following options: All, Sales, Purchases, and Adjustments.

Date	Time	Description	Company	Move Qty	Move Wgt
08/03/09	11:28:41	Receive PO# 10442	Z BEST INC.	15.00	0.00
06/21/11	13:25:26	Receive Item from Vendor GF110		5.00	0.00
06/28/11	10:12:34	Invoice # 103240	CHINA SEA	-1.00	0.00
06/28/11	10:50:27	Invoice # 103246	JOE'S CATERING	-3.00	0.00
06/28/11	11:33:42	Invoice # 103241	FANTASY CAFE	-2.00	0.00
06/29/11	08:46:41	Invoice # 103254	TROLLEY HOUSE CAFE	-2.00	0.00

Additional details from the screenshot:

- Data from: ___/___/___ to: ___/___/___
- Show: All (dropdown menu open)
- Refresh button
- 99 records
- Navigation buttons: Add Item, Delete Item, OK, Cancel, Apply

entrée Security Management Enhancements

Make the list of "Miscellaneous" password options more user friendly by assigning permanent ID number values to each password option in System, Security Management user account Settings option.

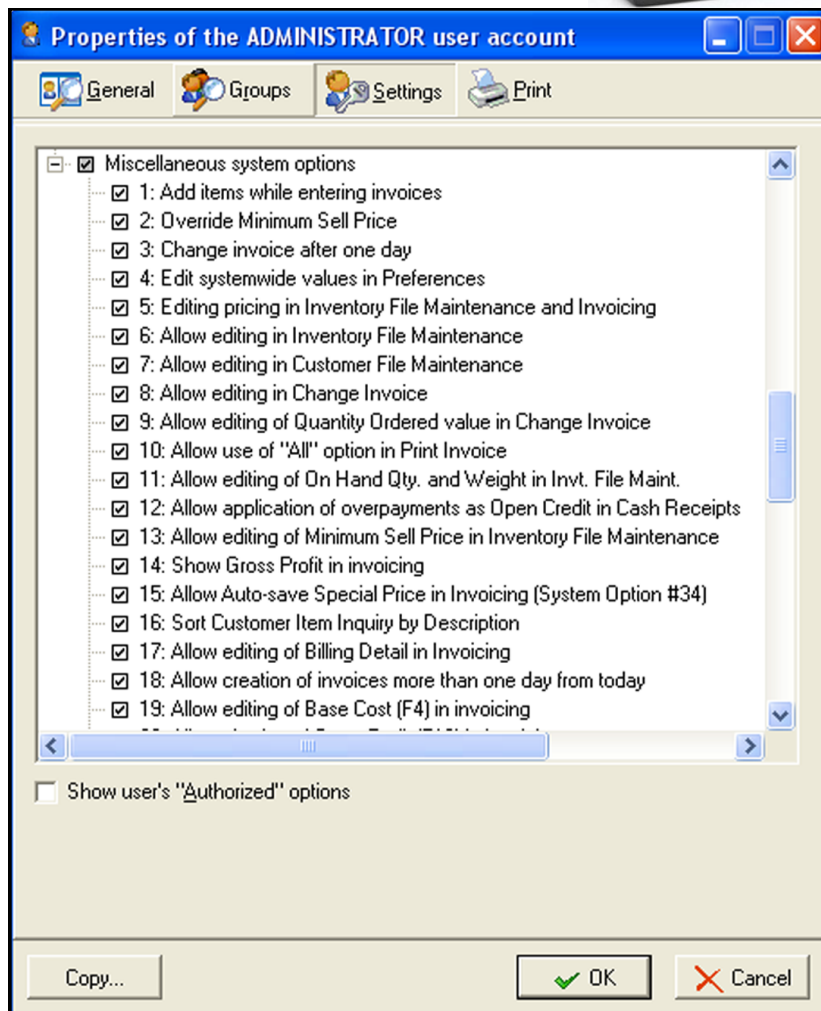


This list of password options has grown substantially over the years sometimes making it difficult for users to find the correct settings.

The fact that there are two or three options which may do similar things with small differences has added complications. This upgrade will help to clarify the use of these password options going forward.

Many of the password option settings in the "Miscellaneous system options" list are associated with specific custom modifications for **entrée**. Their numeric ID values must to be permanently assigned and will be seen as gaps in the numbering.

View [Customs Modifications Catalog](#)



"NECS_ERR.LOG" File for Terminal Services

Adjusted the handling of the "NECS_Err.log" file when running under Terminal Services, so that the filename will include the name of the user logged into **entrée**, example: "NECS_Err_Fred.log".

The NECS_Err.log files will still be stored in the "ProgramData" folder. Each user will now have his or her own individual copy of the file. This update will significantly reduce the number of problems related to permission conflicts, which happen when everyone is trying to access a single file which only has permissions for one user. Note: On standalone systems nothing has been changed.

entrée FTP File Transfers

Updated the centralized system which manages configuration settings for the various FTP-enabled utilities in **entrée** to add support for the "Passive" option.

The "Passive" option is an alternative operating mode for an FTP file transfer which is better suited for systems which have a firewall installed on their network or workstations.

entrée Updates for the ELECTRONIC LOADING SHEET (ELS) Mobile App

Picking Labels:

Added support in [entrée](#) for remotely printing Picking Labels from the **ELS** mobile app. This feature provides the ability to print labels for a single invoice line item or print only changes. It can operate using either the invoice data stored in the **entrée** data files or use the "in process" data from the **ELS** data files.



Reports:

Updated the process which loads and saves report configuration information to use a unique name for the temporary file. This file is used to pre-process the information as it is being transferred to or from the **entrée** database. This new temporary filename will prevent conflicts which can occur when multiple instances of **entrée** are running on one workstation or when two or more instances of **entrée** are running the same report. This update will prevent problems when **entrée** is running under the COM interface when **ELS** is being used.

ELECTRONIC LOADING SHEET PREVIEW

NECS is developing tablet technology to catch up to the real world needs of business and industry. The success of our [ELECTRONIC ORDER PAD](#), used by DSRs and running on an Apple iPad 2, really shows the promise of where mobile technology is headed.

The **ELECTRONIC LOADING SHEET**, (**ELS**), is the latest mobile app being developed for tablets at NECS. To find out about the features being developed for **ELS** view the first entry in our new [blog](#) posted by Chris Anatra, President and founder of NECS, Inc.

While you are learning about **ELS** in the [blog](#), help NECS steer this product's development by participating in our online survey.

On the right is the banner recently used at the Golbon Food Show in Boise, ID on October 12-14th. Our goal was to create a "Star Trek" type feel for automating a warehouse with **ELS**.

Interested in giving ELS a spin in your warehouse?

[Click here](#) to request an evaluation copy or send an email to: chris@necs.com.



SOFTWARE FOR **necs** | **entrée**[®]
FOOD DISTRIBUTORS

ELECTRONIC LOADING SHEET

BOLDLY GO WHERE ORDER PICKING HAS NEVER GONE BEFORE...

Made for iPad

ELECTRONIC LOADING SHEET PREVIEW



Entering catch weights is also very easy with **ELS**. The below screen shot shows a catch weight item selected, with the weights being entered. All of the same features that the main [entree](#) software provides, such as validating the weight entered against the "Minimum" and "Maximum" weight is supported.

Interested in giving ELS a spin in your warehouse?

[Click here](#) to request an evaluation copy or send an email to: chris@necs.com.

ELECTRONIC LOADING SHEET

Invoice #	230	Rev		Ship To	COUROS		
Inv. Date	10/10/2011				COUSINS RESTURANT		
Route	SOUTH	Stop	055		966 W. LAKE STREET		
					ROSELLE, NY 01172		
Comment	No Comments			Contact	CHEF GILBERT	Phone	(212) 980-8181

All
Dry
Frozen
Refrigerated
Cooler
Add-Ons

#	Item No	Qty	Picked	UOM	D	Pack	Wh.Loc			
1	10311	3.00	3.00	CASE	M	4/1 GAL	CE1351B			
2	10478	2.00	0.00	PC.	H	16/QUART	CE1371A			
3	10590	4.00	0.00	CASE	E	15 DOZEN	CC1121B			
4	19485	1.00	0.00	CASE	P	4/5 # TUI	CB1191A			
5	20081	5.00	3.00	CASE	T	2/9 #	CC1281A			
						15.50	14.80	17.10	15.20	0.00
6	205471	1.00	0.00	CASE	POLLACK UNBREADED 10# BOX (A)	1/10 #	FD1332A			

Total Cases 6
Total Weight 69.0000

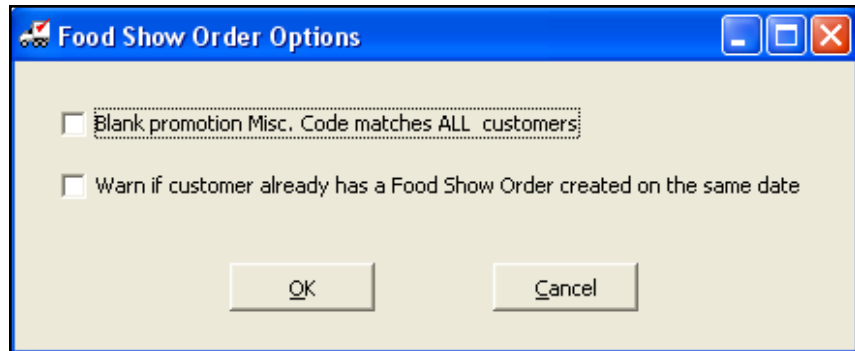
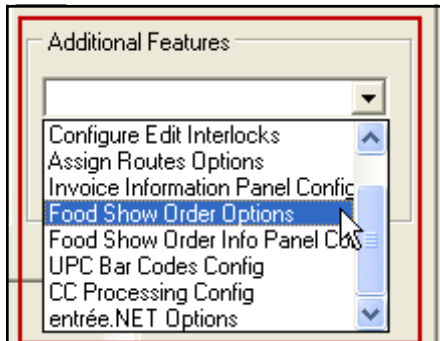
20081 - TURKEY BREAST OVEN ROASTED

	Class	DELI MEATS	Whse. Loc	CC1281A	Min Wgt	7
	Brand	DIETZ & WATSON	Sec. Loc	N/A	Max Wgt	21
	Pack	2/9 #	Const. Wgt	0	Gross Wgt	0
	Lot #	N/A				

Hold
Finish

entree Updates for entree.FS the Food Show Add-On Module

In **entree** System Options, the Additional Features utility now provides a second option related to Food Show Orders called "Food Show Orders Options".



There are two new settings available for the Food Show module when you select Food Show Order Options:

1. "Blank promotion Misc. Code matches ALL customers"

Checking the "Blank promotion" option will permit the Food Show feature to accept any promotion with a blank Misc. Code value regardless of the content of the customer's Misc. Code.

Explanation: The "Blank promotion" option addresses two cases related to the original design of the Food Show feature. **a)** It was required that if the customer's Miscellaneous Code was non-blank then it had to match the Miscellaneous Code which was assigned to the Food Show Promotion. So the customer Misc. Code assignment was being used to identify customers who were eligible to receive Food Show promotional pricing. **b)** In the second case, the distributor was using the customer Misc. Code for other purposes, so the original requirement that the codes match (or that the customer's Misc. Code would be blank) did not work for them.

2. "Warn if customer already has a Food Show Order created on the same date".

The "Warn if same date" option is a quick duplication check similar to the one performed in Invoicing.

Explanation: The Create Food Show Order feature is looking to see if the current customer already has a Food Show Order with the same Order Date as the new order. If a match is found the system displays this message: This customer already has a Food Show Order with an Order Date of xx/xx/xx.



entree[®].FS
FOOD SHOW MODULE

- ✓ Tracks your Food Show orders
- ✓ Define multiple delivery schedules and quantities per ordered item
- ✓ Define unique promotions per ordered item
- ✓ Easy tracking and fulfillment of food show orders



entrée Updates for entrée.DOT the Dot Foods Interface



Purchase Order Export Update

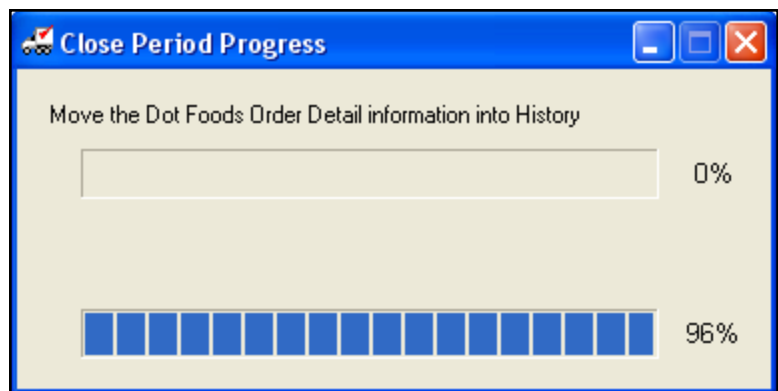
The [entrée.DOT](#) Build and Export Purchase Orders to Dot Foods process will now display a "No qualifying data to export" message when there are no documents to be sent to indicate the successful completion of the export.




New DOT Foods Historical Pre-Order Data Archival Process

Support has been added for archiving historical "preorder" data when the Close Period process for Accounts Receivable is run.

The message about Dot Foods Order Details being moved to History as seen here will be seen during the Close process in [entrée](#).

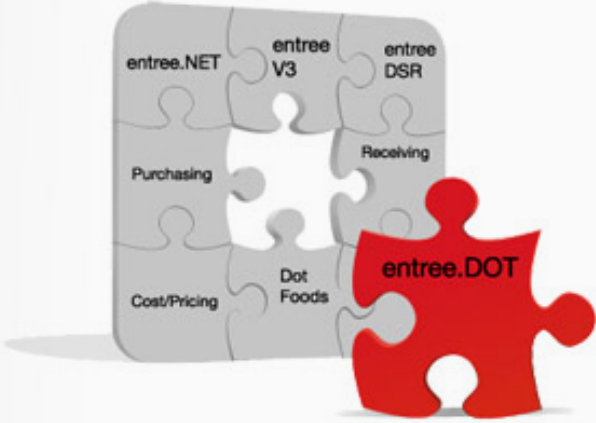




entree[®].DOT

THE DOT FOODS INTERFACE

- ✓ Automates Importing and Updating Inventory from Your Dot Foods Order Guide
- ✓ Data is Imported / Exported via the Internet
- ✓ Automates Cost / Price Updating
- ✓ Supports Stock, Special Order and Drop Ship Items
- ✓ Submit Purchase Orders Electronically
- ✓ All Items Flow into your entrée, entrée.NET and entrée.DSR Software
- ✓ Accepts Dot Foods Advanced Shipment Notices for Receiving Inventory



The [entrée.DOT](#) software module is designed for NECS [entrée](#) users who purchase from [Dot Foods](#). [entrée.DOT](#) allows distributors to expand their product catalog to include all available items in their Dot Foods product catalog without having to expand their warehouse.



Innovative Software Design +
Food Distribution Expertise =
entrée



NECS began in 1987 with its sole mission to produce top quality software for foodservice distributors. At that time, company president, Chris Anatra had determined that the software market was severely lacking in specialized software to address the needs of wholesale food distributors, especially those dealing with meat, seafood, produce, cheese as well as full line distributors.

The only products available at that time were needlessly complex, difficult to use, required expensive computer hardware costing into the six figures, and still did not meet all the needs of the foodservice distributor.

During this time period, the computer industry was beginning its move from large mainframe and minicomputer systems, to the more economical personal computer such, as the IBM PC. Chris Anatra, president of NECS, and the original developer of the NECS software, saw the opportunity to design a system based on the Microsoft and networking technologies available at that time. By adapting to this new technology early, it turned out to be a brilliant move that set NECS to become the leader in food distribution software. NECS was able to provide a comprehensive, easy-to-use software package, at an economical price.

Adapting to new technology early, and constantly providing new features for our user base, continues to be our company mission.

Over the years, the system has evolved into [entrée®](#), a comprehensive Windows* application with more than 3 million lines of programming source code.

To date, almost 1,500 wholesale food distributors have decided that the NECS entrée system is the best product to meet their demanding needs. Our large network of satisfied customers makes this decision even easier.

Foodservice distributors which run their operations on NECS computer software are more profitable and operate more efficiently on reduced staffs. This leaves NECS with an enthusiastic user base, who readily recommends NECS software to other wholesale food distributors.

NECS customers range in size from smaller distributors with sales revenues of a few million per year, up to distributors with sales approaching \$200 million per year. The average size NECS customer has sales of \$25 million/year, and requires about 20 workstations.

entrée and NECS Food Distributing System are trademarks of NECS, Inc. in the United States and/or other countries. NECS, Inc. may have patents, patent applications, trademarks, or copyrights covering subject matter in this document. Except as expressly provided in any written license agreement from NECS, the furnishing of this document does not give you any license to these patents, trademarks, or copyrights.

*Microsoft and Windows are a registered trademark or trademarks of the Microsoft Corporation in the United States and/or other countries.

*Dot Foods is a registered trademark of Dot Foods, Inc.

*iPad is a registered trademarks of Apple Inc.

*Cordless Ring Scanner with Bluetooth Wireless Technology are trademarks of Socket Communications, Inc.

NECS, Inc.
168 Boston Post Road Suites 6 & 7
Madison, CT 06443
Phone: 203.245.3999
Fax: 203.245.4513

www.necs.com

The logo for 'entrée' is displayed in a dark red font. A red checkmark is positioned above the second 'e'. The background is a solid dark red.