



Features Flash

May 3, 2012

entrée version 3.6.9

entrée.NET version 3.3.6

Electronic Order Pad

entrée.UPC / Electronic Loading Sheet - Dashboard

Table of Contents



entrée Version 3.6.9 Features

System Option # 175	3
Inventory File Exclusion Option	4
<ul style="list-style-type: none"> Exclude Item from public website catalog. 	
Brand File Exclusion Options	4
<ul style="list-style-type: none"> Exclude items in brand from export. Exclude items in brand from public website catalog. 	
Class File Exclusion Options	5
<ul style="list-style-type: none"> Exclude items in class from export. Exclude items in class from public website catalog. 	
Change Invoice History Button	5
Auto Generate Purchase Orders	6
<ul style="list-style-type: none"> Exclude customer past sales 	
entrée.UPC / Electronic Loading Sheet - Dashboard	7 - 8

entrée.NET version 3.3.6 & Electronic Order Pad Features

Three Modifications to entrée.NET System Options	
<ul style="list-style-type: none"> Can order any product 	9
<ul style="list-style-type: none"> Restrict delivery dates to customer route information 	10
<ul style="list-style-type: none"> Max order days enforcement 	10
entrée.NET Website Catalog Display of Case / Piece Items	11
Support for "One Ship" Customer Configurations	11

entrée.NET version 3.3.6 Website Features

Website Option for Multiple Featured Vendors	12
Expanded Features for entrée.NET Website Ads	13 - 14
About NECS	15

entrée Version 3.6.9 Features

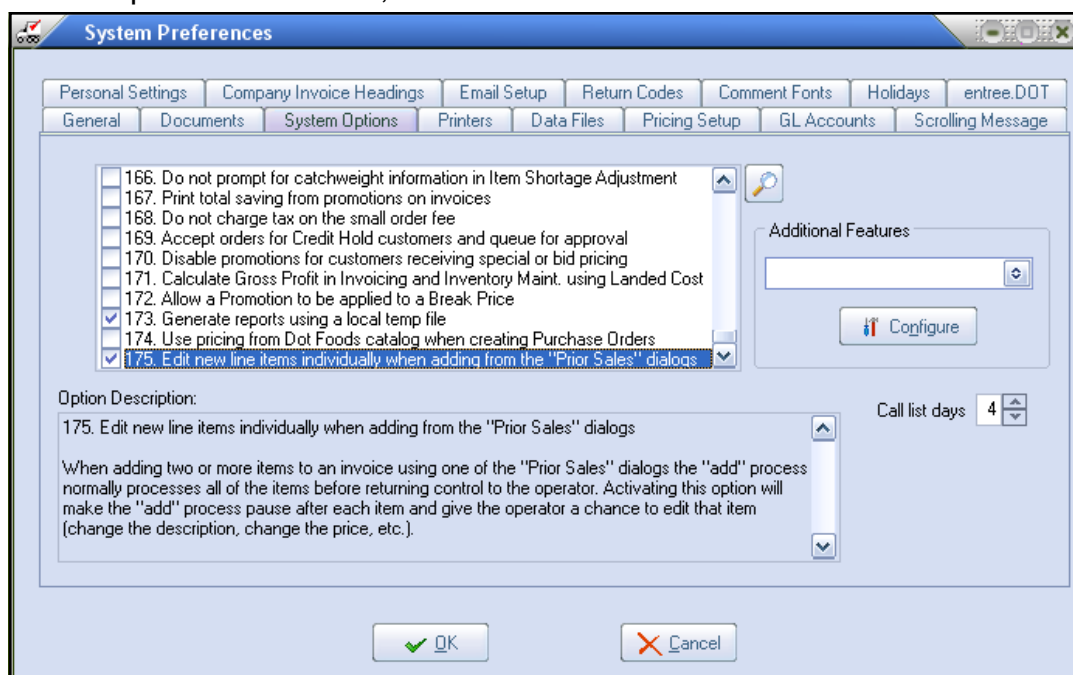


System Option # 175 - Edit new line items individually when adding from the 'Prior Sales' dialogs

Over the last six months, NECS has made some enhancements to the "MTD Sales" and "YTD Sales" dialogs, which are used during the Create/Change Invoice process via the "Prior Sales" button. These enhancements were suggested by customers to make the process faster and easier. However, many NECS users found these enhancements made it more time consuming to enter an order quickly. Therefore, this new system option allows you to set the behavior of these "Prior Sales" dialogues to emulate past behavior.

First enable the system option:

1. The System Administrator will login to the main **entrée** system.
2. Use menu path: **System > Preferences > System Options** tab.
3. Scroll down to option number **175**, check the box and click **OK**.



After system option # 175 has been enabled, when you use the **Prior Sales** feature in Invoicing to add multiple items on a new invoice, the dialog will stop at each item so you can edit it.

Sel.	Add Qty.	Item # ▲	UOM	Description	Qty Ord	Qty Ship	Unit Prc
<input type="checkbox"/>	0	10500B	PC.	loose packs broccoli spears	1.00	1.00	1.6000
<input checked="" type="checkbox"/>	0	20301	CASE	BACON SLICED 18/22 BRYAN	3.00	3.00	39.8900
<input type="checkbox"/>	0	30200B	PC.	loose gallons blue plate mayo	1.00	1.00	6.4000
<input type="checkbox"/>	0	40310	CASE	MARGARINE SOLIDS	1.00	1.00	11.2000
<input type="checkbox"/>	0	40533	CASE	HAM SQUARE DELI	1.00	1.00	1.5000
<input type="checkbox"/>	0	50310	CASE	TOMATOES 5X6	1.00	1.00	23.2000
<input type="checkbox"/>	0	50705	CASE	POTATOES 9OCT.	1.00	1.00	11.5000

entrée Version 3.6.9 Features



Inventory File Option - Exclude Item from public website catalog.

A new option labeled "**Exclude item from public website catalog**" has been added to the ".NET" tab. This option can be used to tailor the items listed in your public website catalog since you may not want every item you sell to be shown.

When this option is checked that specific item will still be listed during order entry for salespeople and for logged-in customers in **entrée.NET** and the **Electronic Order Pad**, but these items will **not** be listed in your public website catalog.

Inventory	Cost/Price	Vendor	History	Promotions	Food Show Promotions	Kits	Special Pricing
Sale Pricing	Future Pricing	Break Pricing	Status	Misc 1	Misc 2	.NET	

Exclude item from export.
 Exclude item from public website catalog.
 Restricted item

Order Entry
Min. Qty
Max. Qty

Item Tags

Delete

Tag
USDA Low Fat

Brand File Options - Brand Maintenance has two new types of brand exclusions in the entrée.NET options section of the List Management dialog.

1. Exclude items in brand from export.

This option will stop any items from the selected brand from being exported to **entrée.NET**.

This also means those brand items will not be seen in the **Electronic Order Pad** catalog.

2. Exclude items in brand from public website catalog.

This option will have the items in the brand listed during order entry for salespeople and for logged-in customers in **entrée.NET** and the **Electronic Order Pad**, but these brand's items will **not** be listed in your public website catalog.

List Management

Add Edit Delete

APW WYOTT
AUTOCRAT
BEST
BIRDS EYE
BLUE PLATE
BRYAN
CAJUN CHEF
CATTLEMAN
CRYSTAL
DIETZ & WATSON
FARMLAND
FLORIDA CRYSTAL
FOUR STAR
HEINZ
HUNTS
IDAHO
JOHNSONVILLE
KENS
LAMB WESTON
LAND O LAKES
MARQUE
MARSHALL DURBIN
MC CAIN
MC CORMICK
NORWESTERN
PACKER
PARADE
PREMIER
PRINCE
REDBALL
REDPACK
REGINA

Cajun Brands.com

Edit Image
Internet Image Search

Website URL
No website address is defined for this brand.
Edit Website

entrée.NET
 Exclude items in brand from export.
 Exclude items in brand from public website catalog.

Close

entrée Version 3.6.9 Features

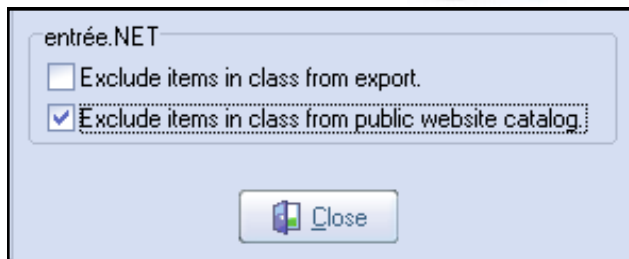


Class File Options - Class Maintenance has two new types of exclusions in the entrée.NET options section.

1. Exclude items in class from export.

This option will stop any items from the selected class from being exported to **entrée.NET**.

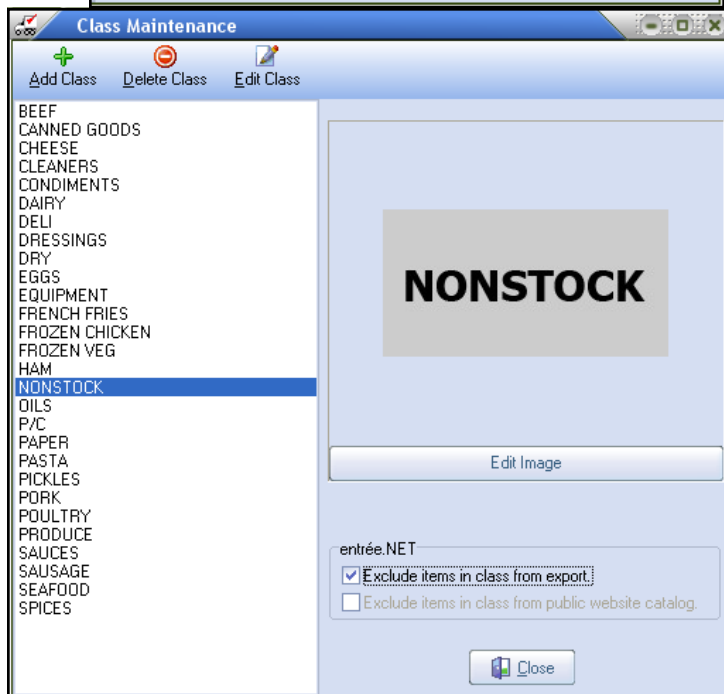
This also means those class items will not be seen in the **Electronic Order Pad** catalog.



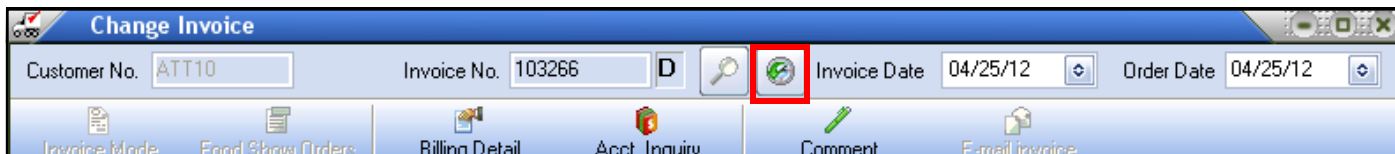
2. Exclude items in class from public website catalog.

This option will have the items in the class listed during order entry for salespeople and for their logged-in customers in **entrée.NET** and the **Electronic Order Pad**, but the items in the class will **not** be listed in your public website catalog.

In this example the 'NONSTOCK' class was excluded from export since it typically is used internally for business charges that are not item related.



Change Invoice History Button



Rev. ▼	Rev. #	Date	Time	Changed by
C	3	04/25/12	09:26:05	entrée administration accour
B	2	04/25/12	09:25:52	entrée administration accour
A	1	04/25/12	09:20:11	entrée administration accour

A "**History**" button has been added to Change Invoice which will provide you with an easy way of accessing information about the "Change History" for the current invoice including who made each change.

Previously Change History was accessed either by double-clicking the "Revision Letter" value to the right of the Invoice No. field or by hitting the Shift+F7 key combination. Both methods still work, but the new button makes it easier to find and use the Change History feature.

entrée Version 3.6.9 Features



Auto Generate Purchase Orders - Exclude Customer Past Sales

You can now exclude sales from specific customers when generating purchase orders using either the "**Selected Invoices**" or the "**Generate from past sales**" options.

First you must mark the customers whose sales you want to exclude:

1. Find the customer in Customer File Maintenance
2. Go to the **Miscellaneous 1** tab
3. Check the "**Exclude from Auto PO Past Sales**" item in the options list and click **OK**.

Customer File Maintenance

Cust. Number: ANN20 Company: ANN'S KITCHEN Phone: (978) 555-1240

Salesperson: CA - CHRIS A. Price Level: 2 FAX: (978) 555-1245

Customer | Bill To/Ship To | Routes | Notes | Group Pricing | History | Special Pricing | Miscellaneous 1 | Miscellaneous 2 | Credit Cards

Address 3: Address 4: Address 5: Primary Email:

Options List:

- Divisional Billing
- Print Statement
- Exempt from Fuel Surcharge
- Authorized for batch email
- Break Pricing
- Export scanned invoices to .NET
- Exclude from .NET export.
- Exclude from Auto PO Past Sales

Commission:

\$/lb. 0.00

% of Sale 0.00

Broker #1

Rate (%) 0.00

Once the feature is enabled for selected customers you can generate purchase orders using either option in the Auto Generate Purchase Orders dialog.

Important Note: The "**Generate from past sales**" option requires that "**Recalculate weekly sales totals**" be checked for it to work properly.

Auto Generate Purchase Orders

Generate from selected invoices

Starting Invoice Date: 04/25/12

Ending Invoice Date: 04/25/12

P.O. Required Date: 04/26/12

Generate from past sales

Run for: All Vendors

Number of weeks to review: 12

Calculate using: Average sales

Quantity rounding: None

Include current week sales

Recalculate weekly sales totals

Week Ending Date: 04/29/12

Order "Piece" items separately

Include "Piece" item inventory in calculations

Continue Cancel

entrée Version 3.6.9 Features




entrée.UPC / Electronic Loading Sheet - Dashboard

In order for you to see the activity of your warehouse employees using either **entrée.UPC** or the newer **Electronic Loading Sheet**, we have included a new feature called the "Warehouse Manager Dashboard". This new window will provide a listing of your employees logged in to either the **entrée.UPC** handheld scanner or an Android tablet for the **Electronic Loading Sheet**, and their current activity and productivity.

Because both these products track the detail of each users productivity, including every catch weight entered or scanned, every item picked, etc., this dashboard is a way to monitor, report and help you analyze and track their work. You will always know who picked an invoice down to the detail of individual line items, substitutions and catch weights.

The **Warehouse Manager Dashboard** is located in the **System** menu in the main **entrée** system.

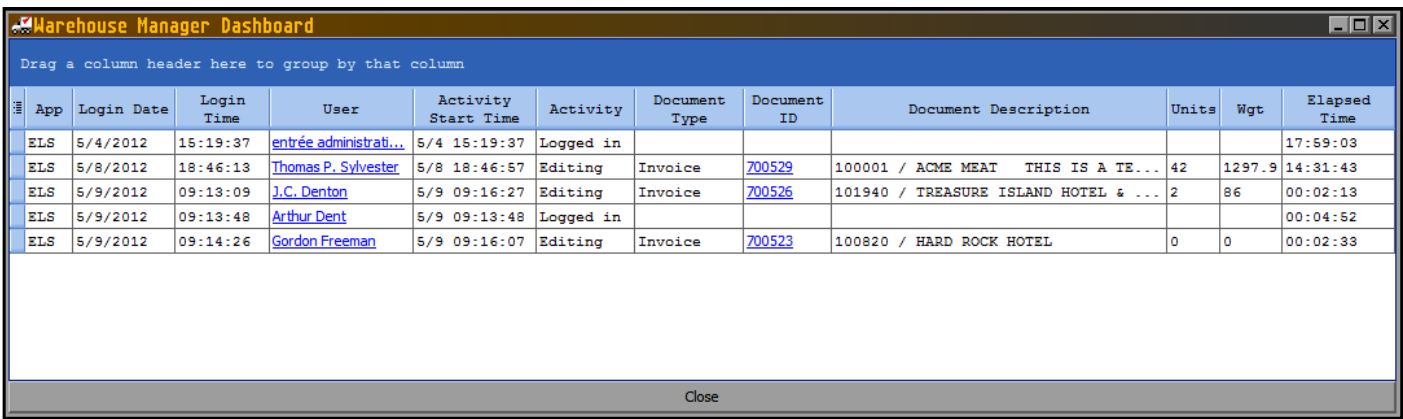


 The **Warehouse Manager Dashboard** includes a column selection tool, to the left of the column headers, that can be used to customize the columns displayed in the dashboard.

The "Drag a column header here to group by that column" feature at the top of the dashboard screen allows you to control how the information is grouped in the dashboard by dragging a column header to the area.

The information displayed in the Warehouse Manager Dashboard includes:

- **App** - The software application being used which includes: **ELS (Electronic Loading Sheet)** and **UPC (entrée.UPC Bar Code scanning software)**.
- **Login Date & Login Time** - The date and time the user logged into the App.



App	Login Date	Login Time	User	Activity Start Time	Activity	Document Type	Document ID	Document Description	Units	Wgt	Elapsed Time
ELS	5/4/2012	15:19:37	entrée administrati...	5/4 15:19:37	Logged in						17:59:03
ELS	5/8/2012	18:46:13	Thomas P. Sylvester	5/8 18:46:57	Editing	Invoice	700529	100001 / ACME MEAT THIS IS A TE...	42	1297.9	14:31:43
ELS	5/9/2012	09:13:09	J.C. Denton	5/9 09:16:27	Editing	Invoice	700526	101940 / TREASURE ISLAND HOTEL & ...	2	86	00:02:13
ELS	5/9/2012	09:13:48	Arthur Dent	5/9 09:13:48	Logged in						00:04:52
ELS	5/9/2012	09:14:26	Gordon Freeman	5/9 09:16:07	Editing	Invoice	700523	100820 / HARD ROCK HOTEL	0	0	00:02:33

entrée Version 3.6.9 Features



entrée.UPC / Electronic Loading Sheet - Dashboard

The information displayed in the **Warehouse Manager Dashboard** includes:

- **User** - The username of the person who logged into the App.
- **Activity Start Time** - The time the current activity was started.
- **Activity** - The user's current activity, such as Editing or Picking an Invoice, Receiving a Purchase Order, etc.
- **Document Type** - The type of document being worked on such as a Cycle Count, Purchase Order or Invoice.
- **Document ID** - The ID associated with the document, such as the Invoice Number, Purchase Order Number, etc. Note that if you click on the Document ID, such as an Invoice Number, the system will pop-up a read only view of the Invoice, so that you can see all the details of the document being worked on.
- **Document Description** - This column will display more information about the document being worked on. For example, if the user is picking an invoice, this column will display the customer number and name. If the user is receiving a Purchase Order, the vendor number and name will be displayed. If the user is doing a Cycle Count, the item number and description will be displayed.
- **Units** - The total number of pieces associated with the document. For example, if an invoice is being picked, the total number of pieces for that invoice will be shown. This will provide you with the size of the task the user is working on.
- **Wgt** - The total weight associated with the document. Similar to the way "Units" works as described above.
- **Elapsed Time** - How long the current activity has been going on.

When you click the **User** link it opens the **Dashboard - User Detail** window which provides information about the user's recent activities in the warehouse.

Dashboard - User Detail
User: J.C. Denton

Date	Time	App	Doc Type	Document ID	Item #	Item Description	UOM	Qty +/-	Wgt +/-	Scan?
Document ID : 700526										
5/9/2012	09:19:38	ELS	Invoice	700526	P0465	MOLINARI SOPRESATTA MILD	PC.	1.00	8.000	N
5/9/2012	09:19:34	ELS	Invoice	700526	P0465	MOLINARI SOPRESATTA MILD	PC.	0.00	-63.000	N
5/9/2012	09:19:28	ELS	Invoice	700526	P0465	MOLINARI SOPRESATTA MILD	PC.	1.00	7.000	N
5/9/2012	09:16:40	ELS	Invoice	700526	P0465	MOLINARI SOPRESATTA MILD	PC.	1.00	8.000	N
5/9/2012	09:16:35	ELS	Invoice	700526	P0465	MOLINARI SOPRESATTA MILD	PC.	1.00	78.000	N

Close

entrée.NET Version 3.3.6 & Electronic Order Pad Features

Three Modifications to entrée.NET System Options

The System Administrator must login to update these **entrée.NET** system options. Use menu path: **Settings Tab > Options button > Order Entry Section.**

1. Can Order Any Product

This system option will now allow you to control what customers view in your catalog. You can allow all items in your catalog to be viewed or limit them to the customer's Standard Order with options as described below.

The three choices you now have are:

- a. **"Yes"** - This setting will display and allow for ordering of all items in the distributors catalog that are not otherwise excluded. Exclusions can be due to item restrictions like the "Restricted item" option on the .NET tab in Inventory File Maintenance or the "Approved" item option.
- b. **"Restrict to Standard Order"** - This setting retains the previous behavior when the option was set to "No". Only items that are present on the customer's Standard Order will be displayed and allowed to be ordered.
- c. **"Restrict To Standard Order (View All)"** - This setting will display all items in the distributors catalog that are not otherwise excluded due to item restrictions such as the "Restricted" or "Approved" item options when browsing the "Catalog" section. Customers and salespeople will only be allowed to order items present on the customers Standard Order from the "Standard Order" and "Quick Entry" sections. Additionally all pricing will be hidden in the "Catalog" section regardless of the "Show prices" system option setting.

Order Entry	
Prompt for "Special Instructions"	Yes
Display price information	Yes
Display item last purchase information.	Yes
Min order amount	\$0.00
Max order amount	\$0.00
Min order weight	0
Max order weight	0
Allow decimals in order quantities	No
Can order any product	Yes
Allow customer to specify delivery date	Yes
Max order days	Restrict to Standard Order
	Restrict to Standard Order (View All)

entrée.NET Version 3.3.6 & Electronic Order Pad Features

Three Modifications to entrée.NET System Options

2. Restrict Delivery Dates to Customer Route Information

This system option allows a distributor to control and apply delivery date restrictions on their salespeople and customers.

The new choices for this system option are:

- No
- Customers Only
- Salespeople Only
- Customers and Salespeople

These new choices will allow you to have complete control over how the delivery date restrictions are applied.

Note: This feature is currently not supported in the **Electronic Order Pad** but will be added in a future version.

A screenshot of a software interface showing a dropdown menu for the system option 'Restrict delivery dates to customer route information.'. The dropdown is open, showing four options: 'No', 'Customers Only', 'Salespeople Only', and 'Customers and Salespeople'. The 'Customers Only' option is currently selected and highlighted in blue. The text 'Restrict delivery dates to customer route information.' is highlighted with a red box in the background.

3. Max Order Days Enforcement

This system option controls access to the creation and completion of orders when the customer's next scheduled delivery date exceeds the "**Max order days**" system option setting (this option is set to 5 in the image below).

This new system option has three choices:

- "**Allow for next delivery date**" - This setting keeps the behavior the same as before and allows for entry of orders but only on the *next* scheduled delivery date.
- "**Prevent Completion**" - This setting allows the salesperson or customer to view the item catalog and create an order but will prevent the order from being completed and transmitted to the main **entrée** system until the current date is within the allowed completion window determined as Next Delivery Date - **Max Order Days** .
- "**Block Order Entry**" - This setting completely blocks all access to the order entry features of **entrée.NET**. Customers and salespeople will not be allowed to edit or create orders in the system until the allowed submission window determined as Next Delivery Date - **Max Order Days**.

A screenshot of a software interface showing a dropdown menu for the system option 'Max order days enforcement'. The value '5' for 'Max order days' is highlighted with a red box. The dropdown menu is open, showing three options: 'Allow for next Delivery Date', 'Prevent Completion', and 'Block Order Entry'. The 'Allow for next Delivery Date' option is currently selected and highlighted in blue. The text 'Max order days enforcement' is highlighted with a red box in the background.

entrée.NET Version 3.3.6 & Electronic Order Pad Features


entrée.NET Website Catalog Display of Case / Piece Items

The display of case / piece items in the item listings of the website catalog has been modified so piece (PC.) items will now be grouped with and displayed below the master case item.

This will make it easier for your customers and potential customers to easily see the multiple units you may offer to sell a product.

Browsing Product Class: FROZEN VEG

Displaying 1 - 2 of 2 results. [Print Catalog](#) Results per page

Item #	Unit	Pack Size	Description	Brand	Quote
	10500	BIRDS EYE	12/2#	CASE	☑
	10500B	BIRDS EYE	1/2#	PC.	

Support for "One Ship" Customer Configurations

Addresses for customers setup with a "One Ship" address on the "Bill To / Ship" tab of Customer File Maintenance will now show the correct shipping address in **entrée.NET**. This feature requires **entrée** version 3.6.9 or later.

In the two images below the **entrée.NET Customer Setup** tab shows the same central office used for the Billing Address for their multiple businesses and locations in the Shipping Address. This information is maintained and exported from the main **entrée** system.

Customer Information

Billing Address	Shipping Address
Company: ANN SAND ENTERPRISES	Company: ANN'S SUPERMARKET
Address: 2419 WEST ST SALEM, MA 01912	Address: 26 RIVER RD MANCHESTER, MA 01972
Phone: (978) 555-1230	Phone: (978) 555-1260
Fax: (978) 555-1235	Fax: (978) 555-1265

Customer Information

Billing Address	Shipping Address
Company: ANN SAND ENTERPRISES	Company: ANN'S RESTURANT
Address: 2419 WEST ST SALEM, MA 01912	Address: 51 SOUTH ADEMA LN GLOUCESTER, MA 01956
Phone: (978) 555-1230	Phone: (978) 555-1250
Fax: (978) 555-1235	Fax: (978) 555-1255

entrée.NET Version 3.3.6 Website Features

Website Option for Multiple Featured Vendors

The "Featured Vendor" website feature located in the **entrée.NET Website** tab now allows you to define multiple vendors to be highlight in the Featured Vendors block of your website home page in a rotating slideshow.

The **Add New Featured Vendor** dialog will allow you to select a **Brand** from a drop down list of all the vendors defined in your main **entrée** system.

Show specials only:

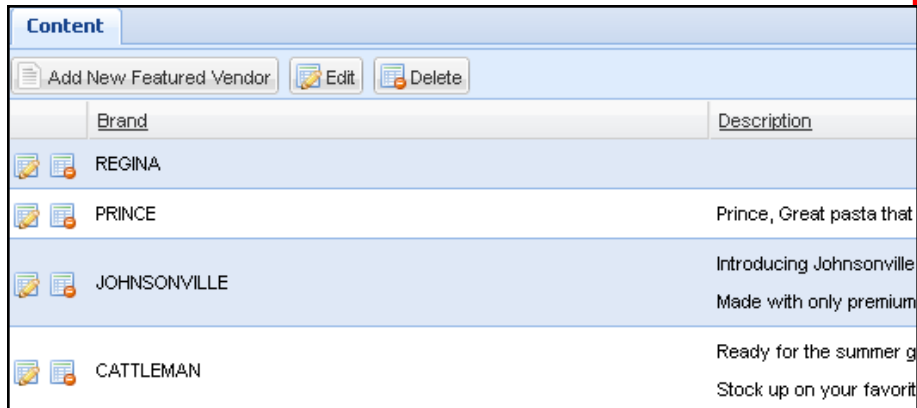
Check this option to only display the vendor's specials when the vendor image is clicked on the home page. If not checked all the vendor's products in your catalog will be listed.

Image: Browse, select and upload a vendor image that will be displayed in the home page slideshow and used as a link.

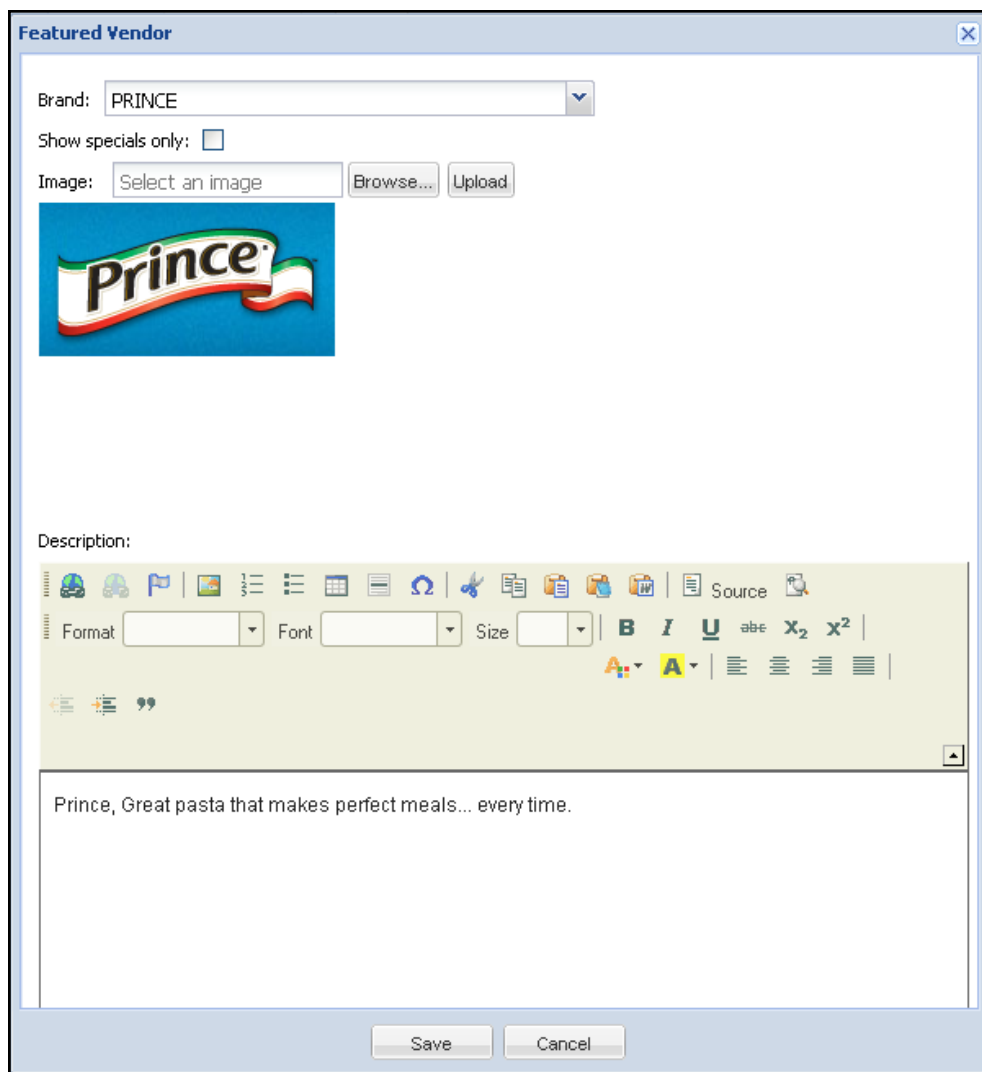
Description: Enter brand, product, or information about specials. This text will be used for website SEO and will not be displayed.

Home page display:

Your customers can click the image on the home page to open the catalog




Brand	Description
REGINA	
PRINCE	Prince, Great pasta that
JOHNSONVILLE	Introducing Johnsonville Made with only premium
CATTLEMAN	Ready for the summer g Stock up on your favorit



Brand: PRINCE

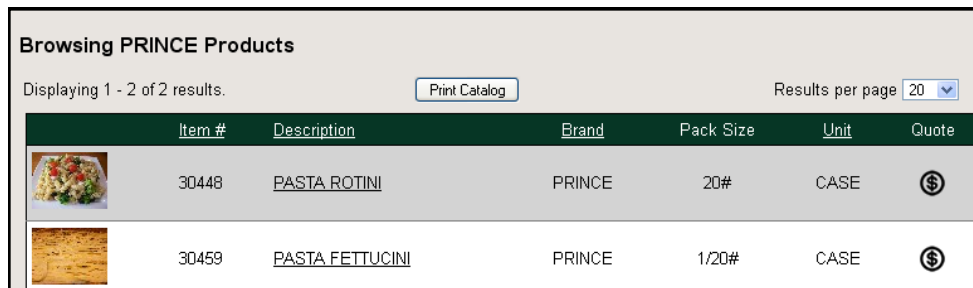
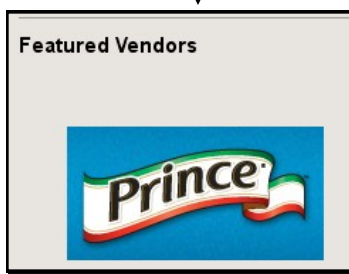
Show specials only:

Image:



Description:

Prince, Great pasta that makes perfect meals... every time.



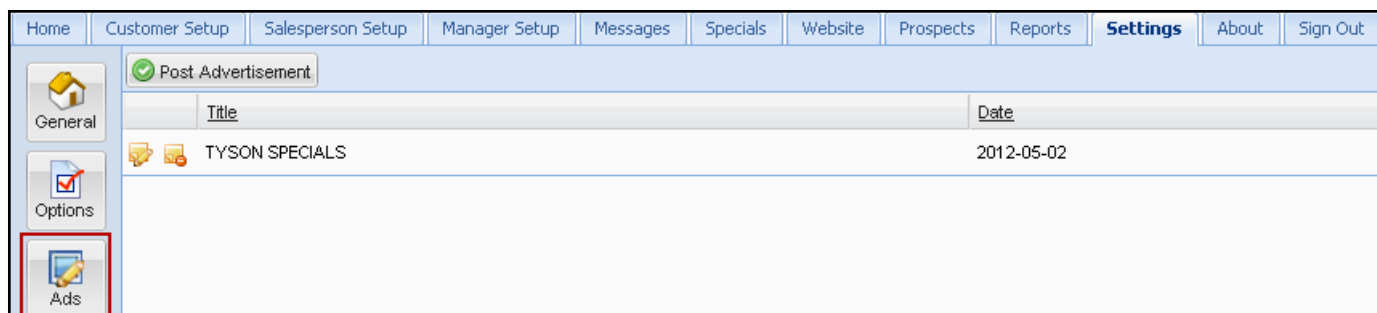
Browsing PRINCE Products

Displaying 1 - 2 of 2 results. Results per page 20

Item #	Description	Brand	Pack Size	Unit	Quote
30448	PASTA ROTINI	PRINCE	20#	CASE	\$
30459	PASTA FETTUCINI	PRINCE	1/20#	CASE	\$

Expanded Features for entrée.NET Website Ads

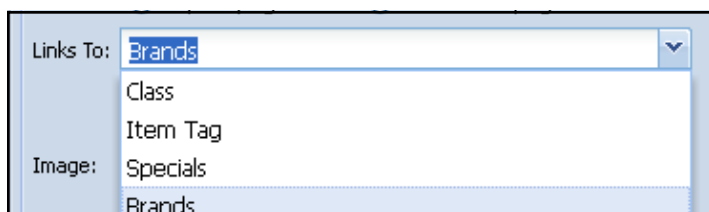
The **Ads** feature is located in the **Settings** tab of **entrée.NET**. Here you can create an advertisement to post on your website home page.



1. **Position:** Create an advertisement and set the position of the advertisement image on your website home page using the new "**Position**" field in the **Post Advertisement** window.

Select to display your advertisement image either at the **Top of page** or the **Bottom of page** of your website home page.

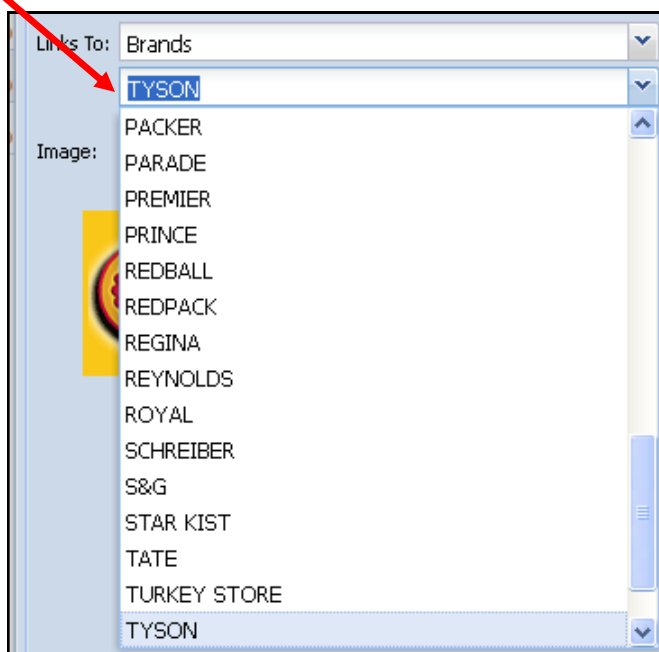
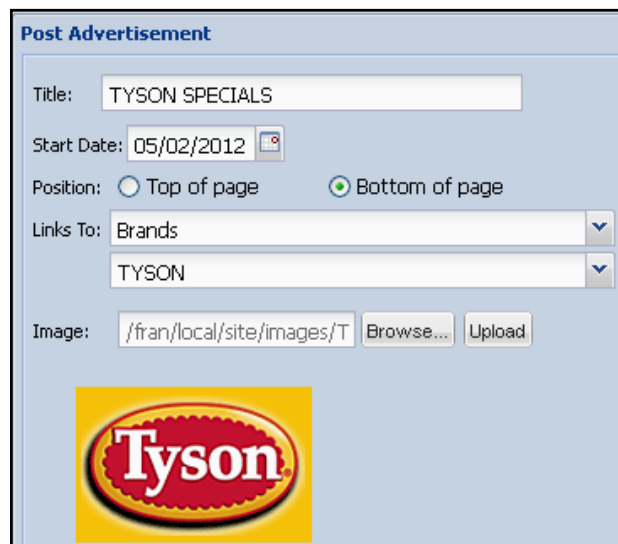
2. **Links To:** You can now select **Brands, Class, Specials** and **Item Tag** for this option.



If you select **Brands** for your advertisement you will then select the specific brand from the drop down menu below. A similar list will be shown for each of the other **Links To** choices.

Then when the advertisement image is clicked on in your website home page the customer will be brought to the catalog page displaying all the items with that Brand, Class, Specials or Item Tag.

3. **Image:** Most restrictions on image size and shape have been removed from the image upload dialog for advertisements and banners allowing you to use almost any shape and size image. The image uploaded will serve as the link to the product catalog.



entrée.NET Version 3.3.6 Website Features

Expanded Features for entrée.NET Website Ads

An Important Note:

Since advertisements are randomly selected from the **Ads** listing for display on your home page, once an advertisement has expired it must be deleted from the **Ads** list. This will prevent expired advertisements from displaying on your website home page.

In the home page image below the Tyson advertisement has the position set to 'Bottom of Page'.

Post Advertisement

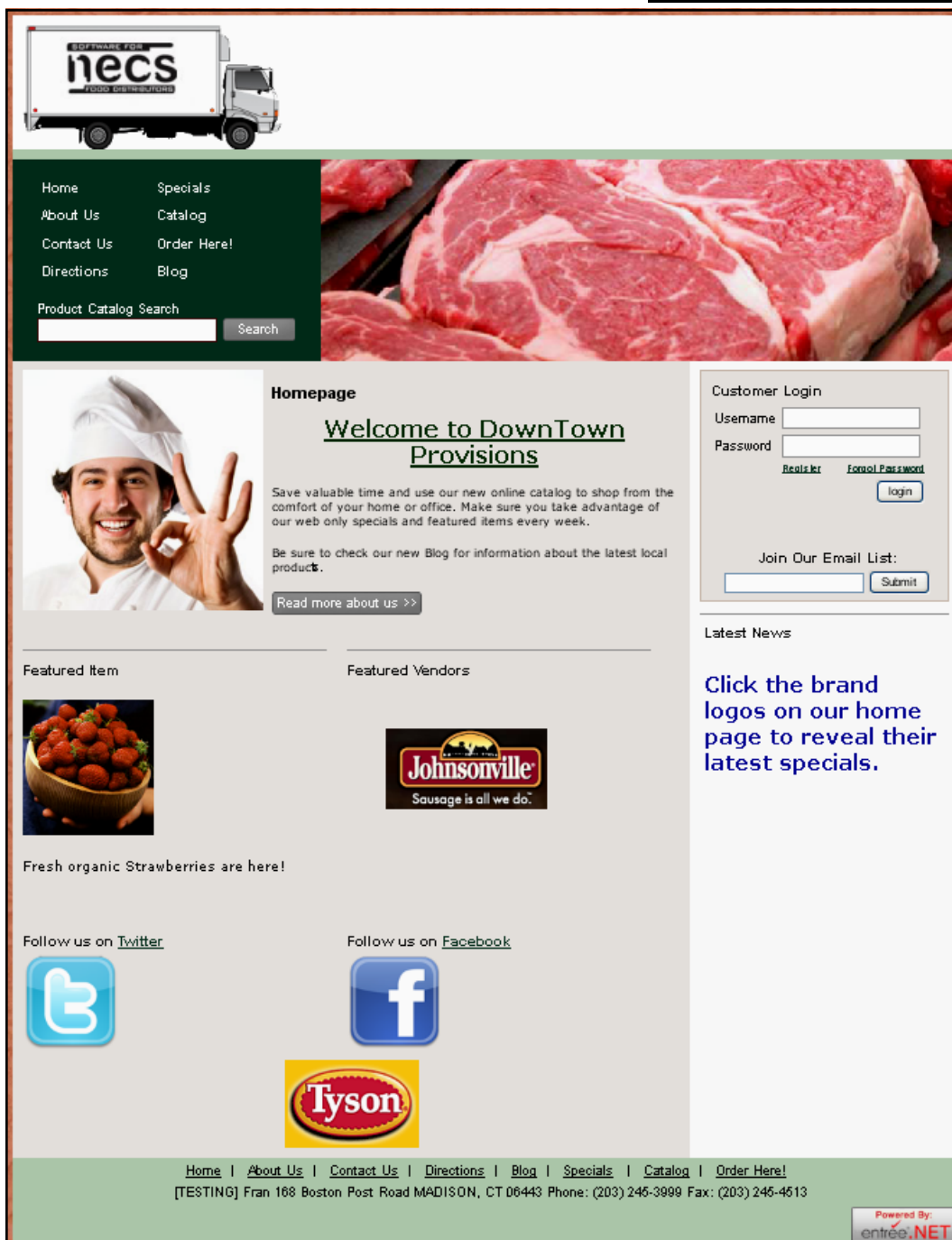

Title:

Start Date:

Position: Top of page Bottom of page

Links To:

Image:



The screenshot shows the homepage of the entrée.NET website. At the top left is a logo for 'necs SOFTWARE FOR FOOD DISTRIBUTORS' with a truck icon. Below it is a navigation menu with links: Home, Specials, About Us, Catalog, Contact Us, Order Here!, Directions, and Blog. A search bar is located below the menu. The main content area features a large image of a chef making an 'OK' hand gesture. To the right of the chef is a 'Homepage' section with the heading 'Welcome to Downtown Provisions' and a paragraph of text. Below this is a 'Featured Item' section with an image of strawberries and the text 'Fresh organic Strawberries are here!'. To the right is a 'Featured Vendors' section with a logo for 'Johnsonville Sausage is all we do.'. At the bottom of the main content area are social media icons for Twitter and Facebook, and a Tyson logo. On the right side of the page is a 'Customer Login' section with fields for Username and Password, and a 'login' button. Below that is a 'Join Our Email List' section with a text input and a 'Submit' button. At the bottom right is a 'Latest News' section with the text 'Click the brand logos on our home page to reveal their latest specials.'. The footer contains a navigation bar with links: Home | About Us | Contact Us | Directions | Blog | Specials | Catalog | Order Here! and contact information: [TESTING] Fran 188 Boston Post Road MADISON, CT 06443 Phone: (203) 246-3999 Fax: (203) 246-4613. A small logo in the bottom right corner reads 'Powered by: entrée.NET'.

Innovative Software Design +
Food Distribution Expertise =
entrée



NECS began in 1987 with its sole mission to produce top quality software for foodservice distributors. At that time, company president, Chris Anatra had determined that the software market was severely lacking in specialized software to address the needs of wholesale food distributors, especially those dealing with meat, seafood, produce, cheese as well as full line distributors.

The only products available at that time were needlessly complex, difficult to use, required expensive computer hardware costing into the six figures, and still did not meet all the needs of the foodservice distributor.

During this time period, the computer industry was beginning its move from large mainframe and minicomputer systems, to the more economical personal computer such, as the IBM PC. Chris Anatra, president of NECS, and the original developer of the NECS software, saw the opportunity to design a system based on the Microsoft and networking technologies available at that time. By adapting to this new technology early, it turned out to be a brilliant move that set NECS to become the leader in food distribution software. NECS was able to provide a comprehensive, easy-to-use software package, at an economical price.

Adapting to new technology early, and constantly providing new features for our user base, continues to be our company mission.

Over the years, the system has evolved into [entrée®](#), a comprehensive Windows* application with more than three million lines of programming source code.

To date, almost 1,500 wholesale food distributors have decided that the NECS **entrée** system is the best product to meet their demanding needs. Our large network of satisfied customers makes this decision even easier.

Foodservice distributors which run their operations on NECS computer software are more profitable and operate more efficiently on reduced staffs. This leaves NECS with an enthusiastic user base, who readily recommends NECS software to other wholesale food distributors.

NECS customers range in size from smaller distributors with sales revenues of a few million per year, up to distributors with sales approaching \$200 million per year. The average size NECS customer has sales of \$25 million per year, and requires about 20 workstations.

entrée and NECS Food Distributing System are trademarks of NECS, Inc. in the United States and/or other countries. NECS, Inc. may have patents, patent applications, trademarks, or copyrights covering subject matter in this document. Except as expressly provided in any written license agreement from NECS, the furnishing of this document does not give you any license to these patents, trademarks, or copyrights.

*Microsoft, Windows, Windows NT, Windows 2000, Windows ME, Windows XP, Windows 7, Windows Vista and Internet Explorer are either registered trademarks or trademarks of the Microsoft Corporation in the United States and/or other countries.

*Intuit and QuickBooks are trademarks and service marks of Intuit Inc., registered in the United States and other countries.

*iPad is a registered trademark of Apple Inc.

*Dot Foods is a registered trademark of Dot Foods, Inc.

*ANDROID and Google are registered trademarks of Google Inc.

*Constant Contact is a registered trademark of CONSTANT CONTACT, INC. Corporation.

*Wavelink is a registered trademark of Wavelink Corporation.

NECS, Inc.
168 Boston Post Road Suites 6 & 7
Madison, CT 06443
Phone: 203.245.3999
Fax: 203.245.4513
www.necs.com

entrée