

entrée[✓].BAK

Product Features

entrée[✓].BAK

BACKUP YOUR ENTRÉE DATA

- ✓ Back up your critical data to a local computer
- ✓ Link to remote back-up servers in NECS data center
- ✓ Search and restore by filename, original file location, filesize, or last modified date
- ✓ Each backup set is compressed and highly encrypted for added security and efficiency

A 3D rendering of server racks and folders. In the background, there are three server racks with white papers flying out of them. In the foreground, there are several orange folders arranged in a circle on a white surface.

entrée.BAK Introduction

The **entrée.BAK** software module is a special backup system from **NECS** designed to easily backup and restore your company's precious **entrée** data. This system guide will cover the installation and use of both the **entrée.BAK Client** and the **entrée.BAK Server** areas of this software module.



entrée.BAK can backup your **entrée** system data to a local computer, or optionally to our remote backup servers at a secure data center. Your backup schedule can be automated so that backups are made whenever you decide. They can also be made while the **entrée** system is in use. Backup sets can be searched and restored by file name, original file location, file size, or last modified date. Local backups employ a FIFO [First In, First Out] rotating disk space quota -you allocate how much disk space your backups may take on your local system.

Using Remote Servers

Many system administrators find that backing up to a remote server is actually more reliable, easier and quicker than using a traditional tape based system. Notifications can be emailed to you when backup sets have been received successfully by our remote backup servers. So if disaster strikes your location, or your backup tapes are destroyed or don't work correctly... having a remote copy will ensure you get your business back online quickly.

Data Security

entrée.BAK both encrypts your data and compresses into a file that only takes a fraction of the disk space of the original **entrée** data file. This ensures your data is secure, and makes the upload process to the remote server fast.



If you would like more information related to pricing or a specific quote for your company's needs, please contact the **NECS Sales** by calling **203.245.3999** or email sales@necs.com. Please visit our website at necs.com to learn about our other add-on modules, products and services.

NECS, Inc. 168 Boston Post Road - Suites 6 & 7 Madison, CT 06443

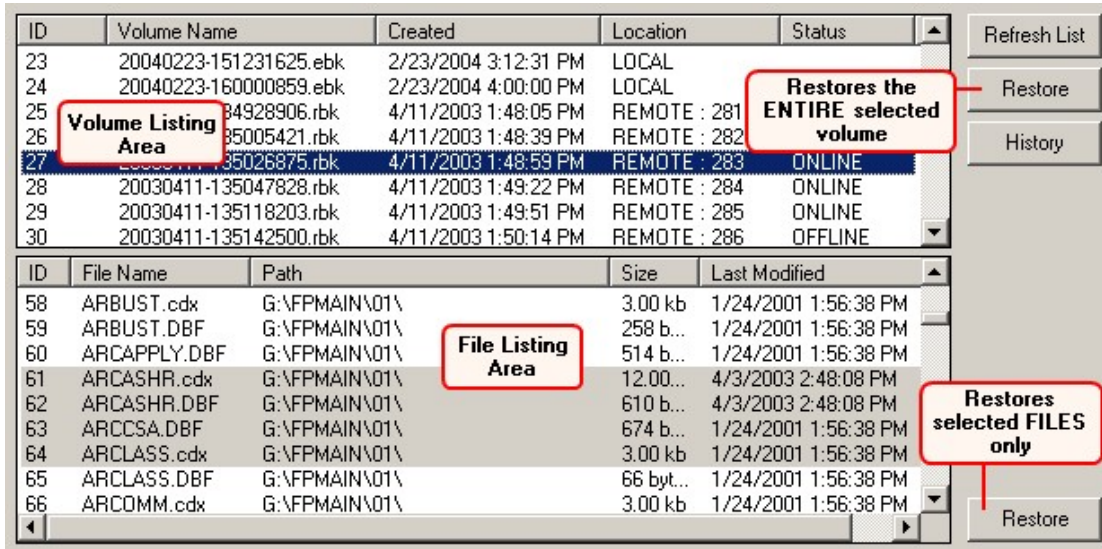
Office Hours: Monday - Friday from 8:30AM EST - 5:30PM EST

Phone: 203.245.3999 **Toll Free:** 800.766.6327 (NECS) **Fax:** 203.245.4513

Product Features

Browse

The 'Browse' feature of **entrée.BAK** makes viewing, finding and restoring your backup volumes easy.

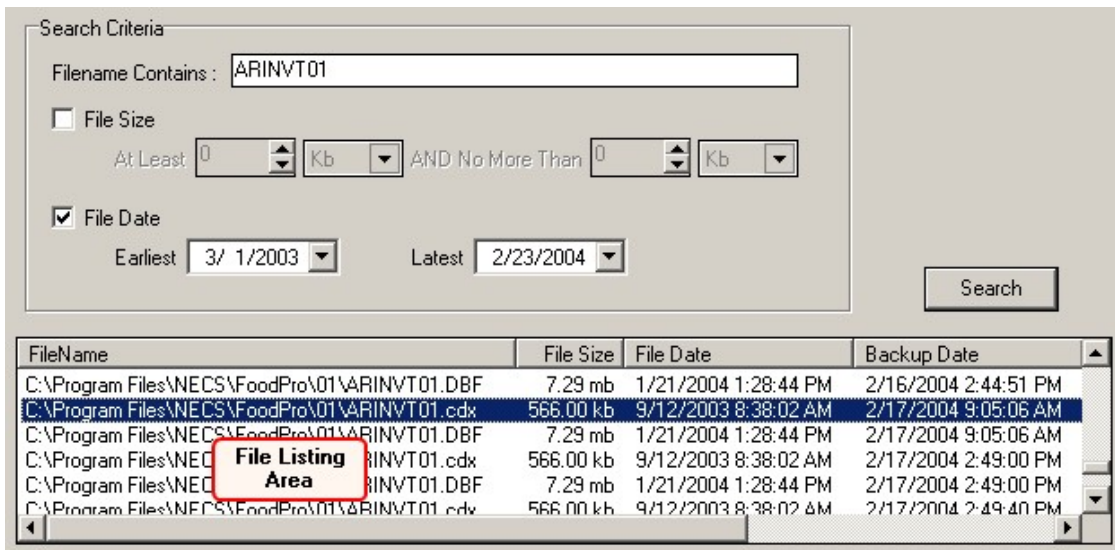


Here you can view a list of all available backup volumes, both 'local' and 'remote', as well as a date/time stamp of when each volume was created.

When a backup volume is selected, its contents are displayed in the file listing area. If a selective restoration needs to be performed, the files to restore are selected from the file listing area. This is ideal if you only need to restore specific files that may have been deleted or corrupted.

Search

When trying to locate specific files that have been previously backed up to a local or remote backup, the 'Search' feature can be used. The search results can be useful in determining where to find particular files to be restored.



When searching for files, you can use three parameters:

1. **Filename Contains:** Enter all or part of the file name to search for in this field. Any file with a filename matching the text entered in this field will be displayed.
2. **File Size:** The file size option allows the user to restrict the number of files that are displayed in the file listing area by entering a minimum and maximum file size.
3. **File Date:** The file date option allows the user to restrict the number of files that are displayed by entering a date range, in which the last modified date of the file must fall in.

Scheduler

The backup scheduler enables the entrée.BAK Server to perform unattended backups automatically, based on a user-defined schedule.

There are five 'Event Properties' you can define related to automating your backups:

1. **Purge Temp Files:** Enable this option if entrée temp files should be purged prior to backing up the data.
2. **Include History Files:** Enable this option if the backup should include the entrée files containing data from closed periods.
3. **Send Backup Data to Remote Server:** Enable this option if the backup should be saved on the NECS remote data server.
4. **Single Event:** Select this option to define a backup event that should be performed once a week, at a specific time, for the specified day.
5. **Recurring Event:** Select this option to define a backup event that should be performed at regular intervals throughout the specified day. The first event occurs at 12:00 AM for the specified day and will continue creating backups until 11:59 PM at the specified interval.

Remote Usage

The 'Remote Usage' feature displays a summary of disk space usage, and allows usage statistics to be displayed for a given date range, including a disk space graph.

