



# FaxMan

## Product Features

### FaxMan

- ✓ Advanced faxing engine for your entrée software
- ✓ Enables faxing of all documents and reports
- ✓ Controls up to 60 fax/modems on your network



# 1 FaxMan Introduction

The FaxMan software is included within both **entrée** version 3 and **entrée V4 SQL** systems. This software module adds a powerful faxing engine to your NECS **entrée** software, using standard fax/modems. It's completely integrated into your **entrée** system software for quick retrieval of fax numbers and other dialing information.

Not only can all **entrée** documents and reports be automatically faxed, it includes a powerful feature related to unattended batch faxing of Price Lists. This allows you to have customized Price Lists automatically faxed to your customers at certain times. Generating beautiful, easy to read Price Lists is one of the many attractive features of **entrée**. Not only can they be emailed as PDF files to your customers, but with Faxman, you have the option of faxing those same documents to your customers that may not accept email yet.

The Faxman module includes extensive history where you can view pending, in-process, completed and failed faxes by date range.

## **Workstation Requirements**

- Class 1, 2, 2.0 and 2.1 fax modems supported
- Compatible with multiple-modem boards and has been certified by board manufacturer **Mainpine**.
- Windows 7 / Windows 8
- Intel 15 or greater
- 4GB RAM
- 1360 x 768 minimum monitor resolution
- 60GB hard drive

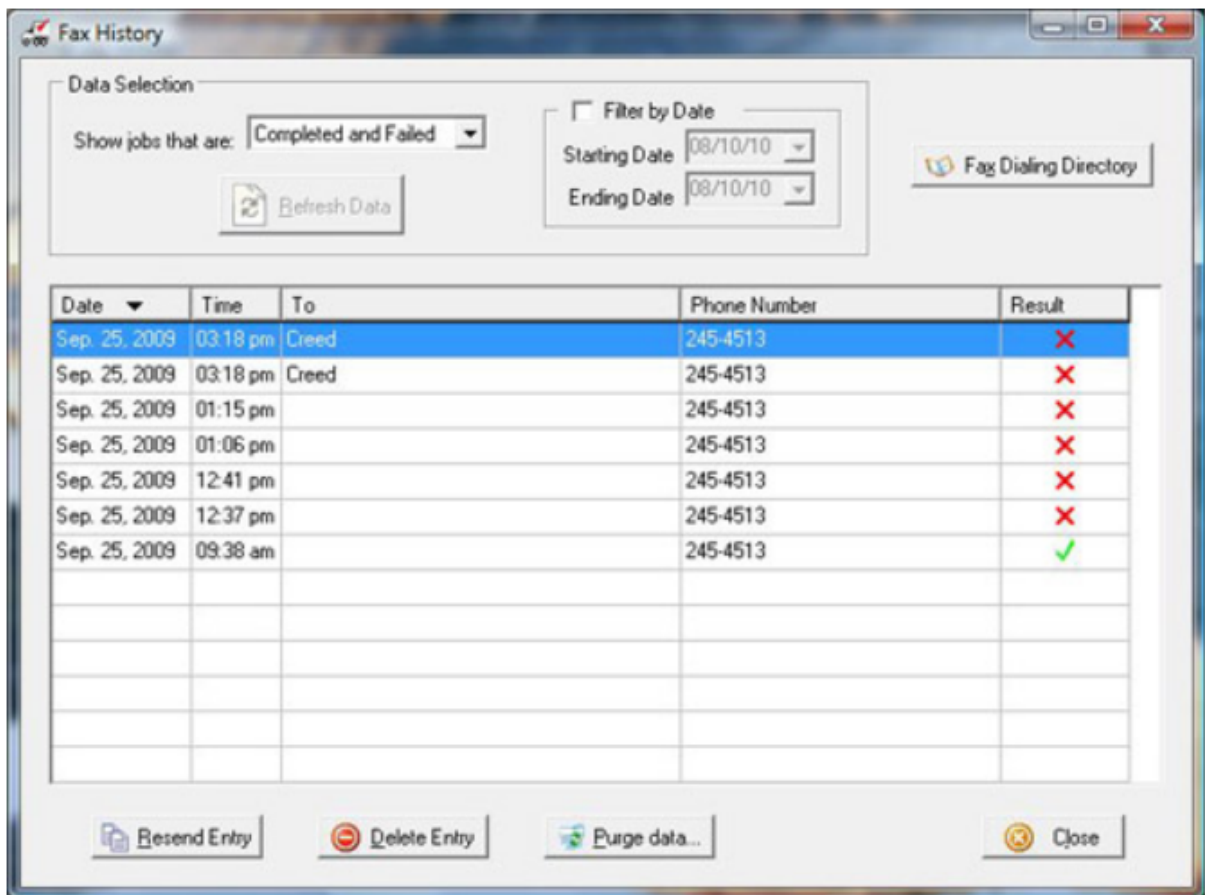
If you would like more information or a specific quote for your company's needs, please contact the **NECS Sales** by calling **800.766.6327** or email [sales@necs.com](mailto:sales@necs.com). Please visit our website at **necs.com** to learn about our other add-on modules, products and services.

---

## 2 FaxMan Product Features

The FaxMan software within the entrée system includes these key features:

- The ability to concurrently use up to 60 fax / modems on your network. If you intend to batch-fax price lists to your customers, for example, you may find that a single modem takes too long by itself. With the new faxing system you may install additional modems to share the load since FaxMan will use as many modems as it can find. It is compatible with multiple-modem boards and has been certified by board manufacturer **Mainpine**.
- The ability to schedule a fax for delivery at a later time. If you need to fax a report to a vendor but would like to send it after hours to save on toll charges, just set the delivery time you wish to use and generate the report. At the scheduled time FaxMan will automatically send the document.
- An enhanced Fax History utility which provides the ability to monitor activity throughout the faxing system. This includes the ability to view or cancel 'pending' faxes (jobs which are either scheduled for later delivery or which are simply waiting their turn to be sent). You may also view or cancel 'in progress' faxes from Fax History.



- View the results of previous transmissions as a list of either 'completed' jobs (jobs sent successfully), 'failed' jobs or a combined 'completed / failed' list.
- Double-clicking an entry will show you more detailed information about the job and will give you the ability to view the actual document.
- FaxMan will always let you know the status of the fax that was sent, including: Pending, In Process, Completed, or Failed.


## Batch Price List Generation

A special feature of the FaxMan software module is the ability to batch generate Price Lists for your customers automatically.

In the Customer File maintenance area of the main **entrée** system, you indicate which of your customers should be included when batch generating individualized Price Lists.

You also have many options related to the look, columns, sorting, filtering, etc. of your Price Lists, so you can create something very visually appealing with only the information you want your customer to see.

When you are ready to begin having the Price Lists automatically faxed, just one click is all it takes and your **entrée** system will begin faxing individualized Price Lists to hundreds or even thousands of your customers.

Item Number	Description	Brand Name	Pack Size	Unit of Measure	Customer Price	Cost Change
<div style="display: flex; justify-content: space-between; align-items: center;"> <div style="text-align: center;">  <p><b>entrée</b> <small>Software for the Food Service Industry</small></p> </div> <div style="text-align: center;"> <p>MADISON DISTRIBUTION INC. PO Box 489 N Springfield, VT 05150 Phone: (800) 228-5481 - Fax: (802) 886-7490</p> </div> <div style="text-align: right;"> <p>Page: 1 Date: 08/12/10 Time: 4:29 PM</p> </div> </div>						
<p><b>Inventory Price List - Effective 08/12/10</b></p> <p>for MT HOLYOKE COLLEGE 50 COLLEGE ST SOUTH HADLEY, MA 01075-0000</p>						
<b>Class Name: 10 APPLE</b>						
APBB	APPLE BRAEBURN 88		88/CS	CASE	49.85	
APBB*	APPLE BRAEBURN 88 6EA		6/EA	EACH	4.50	
APMCEL	APPLE EMPIRE CELLO 12X3#		12/CS	CASE	21.85	
APFU	APPLE FUJI 88		88/CS	CASE	51.00	
APFU*	APPLE FUJI 88 6EA		6/EA	EACH	4.00	
APGAL	APPLE GALA 88	NEW ZEALAN	88/CS	CASE	62.75	
APGAL*	APPLE GALA (ROYAL) 88 6EA		6/EA	EACH	4.90	
APGG	APPLE GINGER GOLD 88		88/CS	CASE	26.90	
APGG*	APPLE GINGER GOLD 88 6EA		6/EA	EACH	2.45	
APGLD100	APPLE GOLD DELICIOUS 100		100/CS	CASE	42.00	
APGLD88	APPLE GOLD DELICIOUS 88		88/CS	CASE	41.45	
APGLD88*	APPLE GOLD DELICIOUS 88 6EA		6/EA	EACH	4.05	
APGS100	APPLE GRANNY SMITH 100		100/CS	CASE	45.40	
APGS125	APPLE GRANNY SMITH 125		125/CS	CASE	45.40	
APGS72	APPLE GRANNY SMITH 72		72/CS	CASE	45.40	
APGS88	APPLE GRANNY SMITH 88/90		88/CS	CASE	53.80	
APGS88*	APPLE GRANNY SMITH 88 6EA		6/EA	EACH	4.10	
APPINK	APPLE PINK LADY 88		88/CS	CASE	48.75	
APRD*	APPLE RED DELICIOUS 88 6EA		6/EA	EACH	3.40	
APRD100	APPLE RED DELICIOUS 100		100/CS	CASE	45.40	
APRD125	APPLE RED DELICIOUS 125		125/CS	CASE	44.25	
APRD72	APPLE RED DELICIOUS 72		72/CS	CASE	43.15	
APRD88	APPLE RED DELICIOUS 88		88/CS	CASE	42.60	
CAFBBCEL	ORG APPLE BRAEBURN CELLO 12X3#		12/CS	CASE	53.80	
CAPCAMEO	ORG APPLE CAMEO 100	WKF	100/CS	CASE	72.05	
CAFFU	ORG APPLE FUJI 80	CHILE	80/CS	CASE	70.00	
CAFFU*	ORG APPLE FUJI 88 6EA	USXF	6/EA	EACH	6.05	
CAFFU70	ORG APPLE FUJI 70	NEW ZEALAN	70/CS	CASE	75.60	
CAPGLD88	ORG APPLE GLD DELICIOUS 88	WKF	88/CS	CASE	73.60	
CAPGS100	ORG APPLE GRANNY SMITH 100	WKF	100/CS	CASE	79.00	
CAPGS70	ORG APPLE GRANNY SMITH 70	CHILE	90/CS	CASE	74.50	
CAPGS70*	ORG APPLE GRANNY SMITH 5EA	ARGENTINA	5/EA	EACH	5.35	
CAFLADY	ORG APPLE PINK LADY 88	WKF	88/CS	CASE	90.20	
CAFLADY*	ORG APPLE PINK LADY 88 6EA	WKF	6/EA	EACH	7.15	

### 3 Contact NECS



- Please visit our website at [necs.com](http://necs.com) to learn about our other add-on modules, products and services.
- If you would like more information about **entree.PEN**, the Anoto Digital Pen interface, please contact NECS Sales by emailing [Anoto@necs.com](mailto:Anoto@necs.com).
- Contact our **NECS Sales Department** at [sales@necs.com](mailto:sales@necs.com) for more information.
- Contact the **Tech Support Department** at [tech@necs.com](mailto:tech@necs.com) for assistance.
- For information about current NECS software training classes use this link: [necs.com/training.php](http://necs.com/training.php)

**NECS, Inc.**

322 East Main Street, Third Floor  
Branford, CT 06405

**Office Hours:** Monday - Friday from 8:30AM EST - 5:30PM EST

**Toll Free:** 800.766.6327 (NECS) **Phone:** 475.221.8200 **Fax:** 203.208.0889