

# entrée.<sup>✓</sup>SE

## Easily Export Your entrée Data to SQL Databases

SQL (Structured Query Language) is a database computer language designed for managing data and is the most widely used for relational databases.

The **entrée.SE** (SQL Export) module allows you to easily and quickly export your NECS data tables into the SQL format.

It includes a special configuration wizard to make configuring the SQL Server database easy and fast. Command line switches are supported to allow the export to be linked into

the Windows Scheduler, to trigger “middle-of-the-night” exports or multiple exports throughout the day.

Important to note is that your **entrée** users can still actively use the **entrée** software without any file permission issues while the **entrée.SE** software is actively exporting data.

This is ideal for applications such as custom report generation or any other custom requirement where you need to gain access to your NECS data in this standard format.



The graphic features the **entrée.<sup>✓</sup>SE** logo and the text "SQL EXPORT OF YOUR NECS ENTRÉE DATA". Below this, two bullet points with red checkmarks state: "Exports all NECS data tables to SQL" and "Links into Windows Scheduler to automatically schedule exports". To the right, a 3D illustration shows a central server rack connected by blue lines to several yellow folders, representing data export and scheduling.

## Technical Requirements

Compatible with Microsoft SQL Server 2005/2008 and Express versions. The SQL Server should be installed on a server other than the main NECS entrée data server.

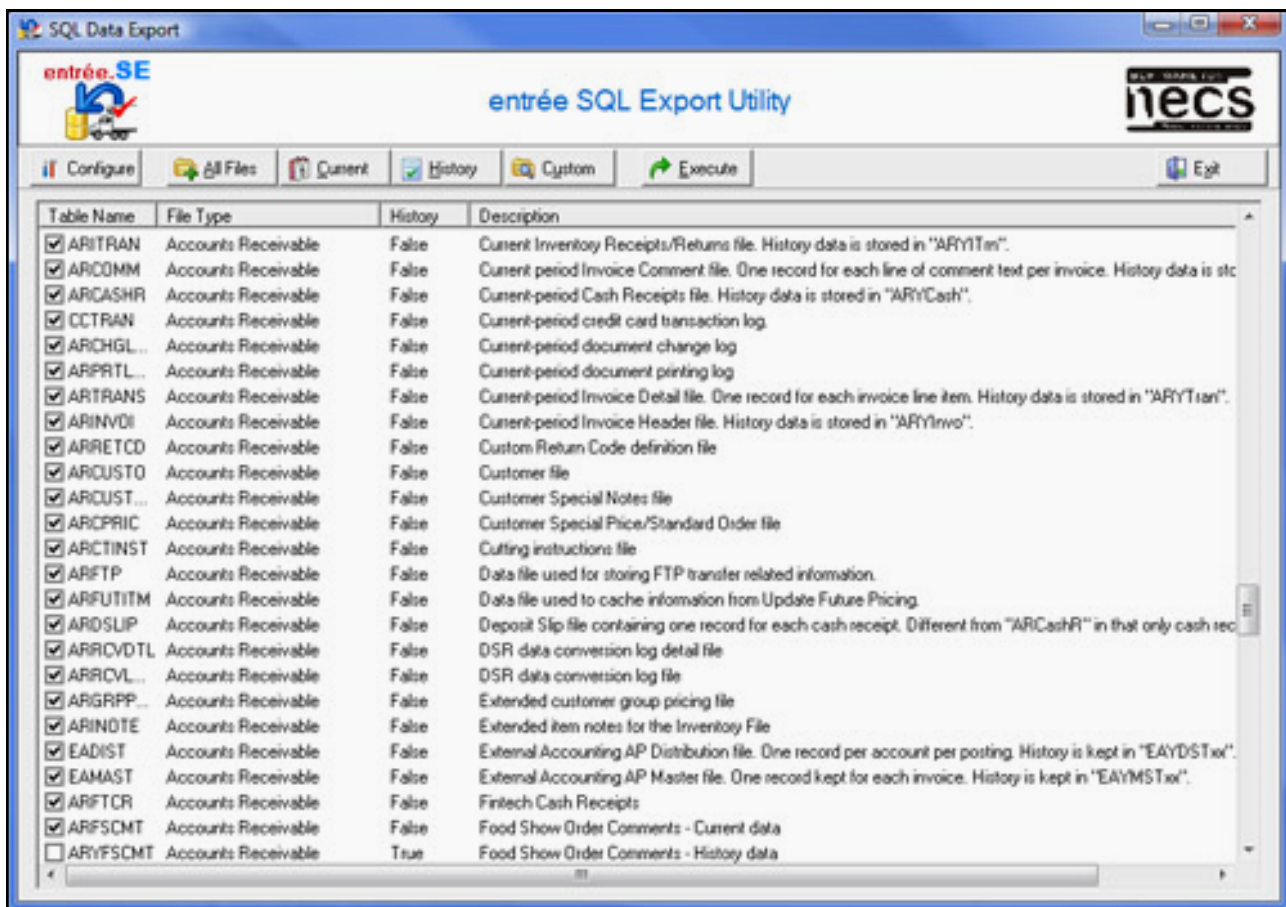
### **Workstation Requirements:**

- Windows XP / Windows Vista / Windows 7 / Windows 8
- Pentium IV 1.7 GHz or greater
- 1GB RAM
- 17" LCD monitor
- 60GB hard drive

## entrée.SE Product Features

The key features of the **entrée.SE** (SQL Export) add-on module software:

- Exports all NECS **entrée** data into SQL Server 2005/2008 and Express versions.
- Configuration wizard makes configuring the SQL Server database easy and fast.
- Bulk inserts provide blazing fast imports.
- Ability to export All Files, Current Files, History Files or a custom selection of data tables.
- Command line switches allow for the export to be linked into Windows Scheduler. This can trigger 'middle of the night' exports or multiple exports throughout the day.
- Users do not have to be out of **entrée** when exporting. Your business runs as normal, as exports are run properly in the background without file sharing issues.
- For NECS customers with more than one operation, your multi-company data is exported into a single SQL database using schemas. This provides the ability to easily query data across two or more **entrée** company databases



Please visit our website at [necs.com](http://necs.com) to learn about our other add-on modules, products and services. Contact our **NECS Sales Department** at [sales@necs.com](mailto:sales@necs.com) for a price quote and more information.

NECS, Inc. 168 Boston Post Road - Suites 6 & 7 Madison, CT 06443

Office Hours: Monday - Friday from 8:30AM EST - 5:30PM EST

Phone: 203.245.3999 Toll Free: 800.766.6327 (NECS) Fax: 203.245.4513