



# Product Features

entree.NET

GET YOUR FOOD DISTRIBUTION BUSINESS ONLINE

- ✓ Fast and easy for your customers / salespeople to enter orders
- ✓ Fully customizable so it works the way you want it to
- ✓ Get a great looking website which includes your product catalog and weekly specials
- ✓ Reduces mistakes and increases sales
- ✓ Customers can check their AR balance, generate reports, and check order status

WWW

# Table of Contents

<b>Chapter I Contact NECS</b>	<b>1</b>
<b>Chapter II entrée.NET Overview</b>	<b>3</b>
<b>Chapter III entrée.NET: General Features</b>	<b>6</b>
<b>Chapter IV entrée.NET: Create Order Features</b>	<b>10</b>
<b>Chapter V entrée.NET: DSR Features</b>	<b>15</b>
<b>Chapter VI entrée.NET: Reports</b>	<b>18</b>
<b>Chapter VII entrée.NET Website Catalog</b>	<b>20</b>

---

# **Chapter 1**

## **Contact NECS**



## 1 Contact NECS



- Please visit our website at **necs.com** to learn about our other add-on modules, products and services.
- If you would like more information about **entrée.PEN**, the Anoto Digital Pen interface, please contact NECS Sales by emailing [Anoto@necs.com](mailto:Anoto@necs.com).
- Contact our **NECS Sales Department** at [sales@necs.com](mailto:sales@necs.com) for more information.
- Contact the **Tech Support Department** at [tech@necs.com](mailto:tech@necs.com) for assistance.
- For information about current NECS software training classes use this link: [necs.com/training.php](http://necs.com/training.php)

### **NECS, Inc.**

322 East Main Street, Third Floor  
Branford, CT 06405

**Office Hours:** Monday - Friday from 8:30AM EST - 5:30PM EST

**Toll Free:** 800.766.6327 (NECS) **Phone:** 475.221.8200 **Fax:** 203.208.0889

© 2013 NECS, Inc. All Rights Reserved.

---

# Chapter 2

## entrée.NET Overview



## 2 entrée.NET Overview

### Internet Order Entry, Reporting & more

The Internet has changed the way we do business, and **entrée.NET** brings those advantages to your foodservice distribution operation. The Internet can be a powerful tool for food distributors who want to increase their sales while also decreasing costs and improving profit margins. This is especially true when you can offer your customers the convenience of entering their own orders 24/7/365, while providing them with a wealth of information about their purchases from you. The success of Internet based e-commerce and the millions of online shopping sites illustrates that when it comes to using the Internet, customers are not only capable and comfortable, but eager. In fact, many of your existing and prospective customers may have already asked you about providing an online extension of your food distribution operation. You realize that you need to give your customers the online experience they have been asking for in order for your business to thrive. You know that by helping them, not only will your customers stay loyal, but the accuracy of orders and sales will both increase, while your costs will be slashed.

### Order Entry Your Customers & DSRs will Love and Depend On

The **entrée.NET** system was created primarily for Internet based order entry by your customers and DSRs. It was designed to speed the user through the order entry process while helping them identify items they should be ordering but may have missed, locate items in your product catalog and discover your current "specials" and other items on sale or featured. They can view extensive information about each item including extended descriptions, images, available pack sizes, etc.

Your product catalog can be viewed using "Tags" such as Kosher, Gluten Free, Fat Free, Peanut Free, etc. Customizable reports can be generated based on up to 13 months of purchase history including exporting to Excel or PDF documents.

Customers can view their accounts receivable status, including open invoices and payments. And if you use our **entrée.DOC** software, they can view and print their scanned invoices showing their signature.

Qty	Item #	Description	Brand	Pack Size	Unit	Vendor	Unit Price	Ext. Amt
10	18200	AMERICAN 120 SL 5# STATE	STATE	5#	PC	5.0000	\$2.49	\$124.50
1	18215	BLUE CHEESE CRUMBLES 4#	STELLA	4#	CASE	20.0000	\$1.00	\$0.00
0	18232	CHEDDAR MILK 5# LOAF RW	LAND O'LAKES	25#	PC	5.0000	\$2.99	\$0.00
0	18238	CHIHUAHUA 8# BLOCK SUPREMO	SUPREMO	8#	CASE	47.5000	\$3.79	\$0.00
0	18260	FETA CHEESE 8# TUB CUCINA ANDOLINA	CUCINA AND.	20#	PC	8.0000	\$2.65	\$0.00
0	18281	HAVARTI CREAMY 1#		1#	EACH	8.0000	\$3.38	\$0.00
0	18290	SWISS CHEESE 8# PC	WISCONSIN	20#	PC	8.0000	\$3.28	\$0.00
0	18300	MOZZ PART 80M CONIGES 8# RW	CEDAR	8#	CASE	48.0000	\$2.00	\$0.00
0	19015	FONTELLA WHEEL 10# STELLA	STELLA	1/10#	CASE	10.0000	\$3.99	\$0.00
0	19028	GORGONZOLA CRUMBLED 4/2 5# STELLA	STELLA	4/2 5#	CASE	10.0000	\$3.65	\$0.00
0	19400	PROVONELLO 7# GRANDE	GRANDE	1/7#	PC	7.0000	\$2.99	\$0.00
0	19445	PARMESAN GRATED 8# 2000 50M	CUCINA AND.	2000/5 50M	CASE		\$12.99	\$0.00
0	19134	MOZZ CLEONE 1/2oz 20# GRANDE	GRANDE	20#	CASE	6.0000	\$4.05	\$0.00
0	19340	MOZZ OVOLINI 20# SORRENTO	SORRENTO	20#	CASE	6.0000	\$3.55	\$0.00

### How It Works

The **entrée.NET** system is specialized e-commerce software running on high capacity cloud based servers to always ensure the system is available and performing at top speed. For security and other issues, it does not allow a user to directly access your local server. Instead **entrée.NET** communicates directly with the local server in your office for such things as accessing inventory information and downloading customer orders. All the activity such as when a user creates an order is saved on the **entrée.NET** cloud servers as the order is built. So if for some reason the user loses Internet access, no data will be lost. The customer or DSR will simply log back in and continue where they left off.

### "Almost Real Time" Inventory, Pricing, AR and more

At any point while using **entrée.NET** the user can do things such as clicking on an item to view important details that you designate them being allowed to see, such as your current on hand quantity, pricing, etc. This information will be displayed as of the last time your **entrée.NET** server was updated.

This update process happens via a scheduler utility that lives on your local **entrée** server. You can have inventory, pricing, customer accounts receivable and other details updated in regular time frames which you define.

For example, you can define that inventory is updated every 5 minutes, which is adequate for most food distributors and provides your customers and DSRs with an "Almost Real Time" view of key information.



## A Modern and Professional Website

If you have your own domain name (ex: myfooddistributingcompany.com) and would like a modern and professional looking site for your business, this can also be accomplished with **entrée.NET**. NECS can help you create your website and give you the ability to maintain it yourself.

You'll have the ability to change images, update the content of your "Welcome", "About Us", "Contact", "Blog" and "Directions" pages.

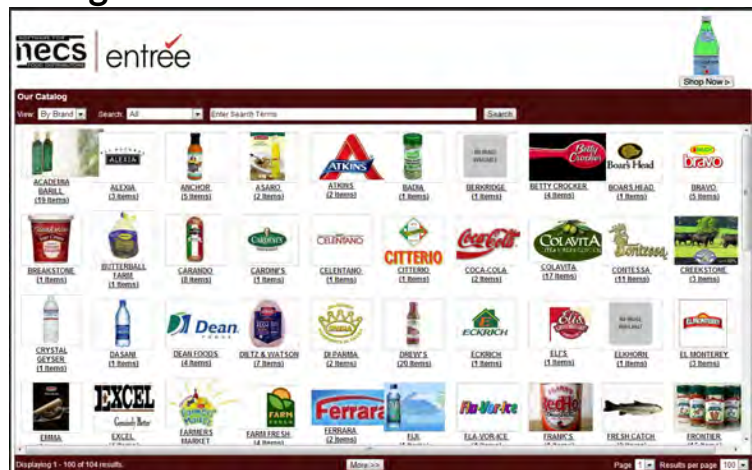
You will be able to automatically post your inventory list and specials, from your NECS **entrée** software, directly to your website, as often as you'd like.



## Pop-Up Catalog for Your Existing Site

If you currently have a website which you love, **entrée.NET** provides an option for a public Pop-Up Catalog which you can easily integrate into your existing site.

This will allow the public to see your product catalog which is automatically updated from your **entrée** software, so there is never a need to contact a web developer to keep your product catalog updated.



# Chapter 3

## entrée.NET: General Features



### 3 entrée.NET: General Features

#### Signing In

When your customers or DSRs want to begin using **entrée.NET**, they will be prompted to sign in with their Username and Password.

When a customer signs in, the system will know all the details about their account, including their pricing formulas, what specials and promotions they qualify for, their sales history, etc.

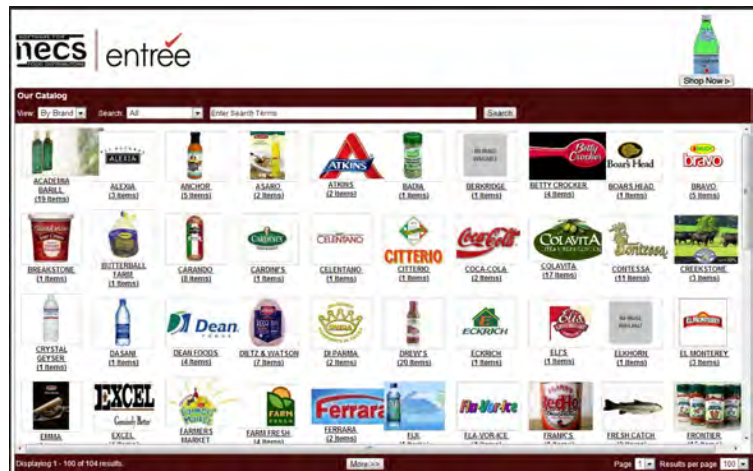
When a DSR signs in, **entrée.NET** will know all the details about their assigned customers, commission formulas, etc.



#### Viewing Your Catalog

When viewing the Catalog, your customers and DSRs will have access to your **entrée** inventory data file, with the ability to group by item "Class" or "Brand Name" with advanced search capabilities.

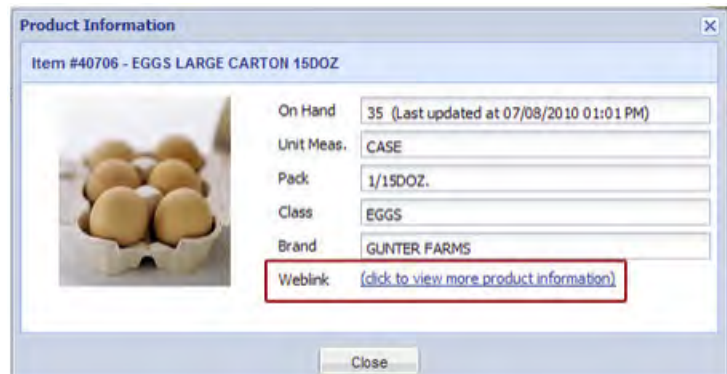
An extensive amount of information can be displayed or disabled for your Catalog, including Pricing (will display customer specific pricing), Product Image, Brand Name, Unit of Measure, Pack Size, UPC Number, Item Constant or Average Weight, Minimum Sell Price, On Hand Quantity, comprehensive item notes and more.



#### Detailed Product Information with Item Weblink

Your user will always have the option to view specific details about an item, including a "Weblink". The item "Weblink" option allows you to enter a custom website link for each item in your **entrée** inventory database, allowing your customers to see more information about the item.

For example, you could provide a link to the vendor's website, where this item has its own page, or perhaps, you could provide a link to a nutritional database showing the nutritional facts for the item.

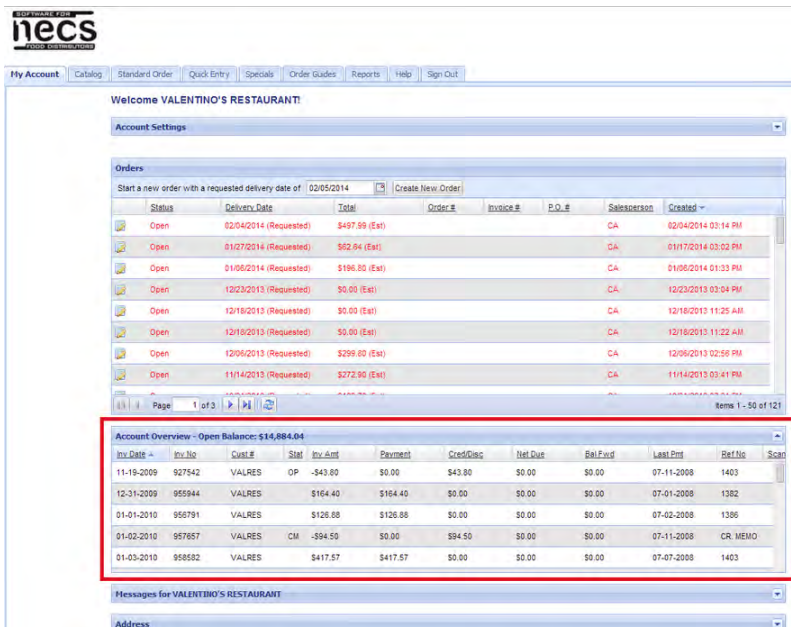


## Account Overview

A user can select to view their Account Overview, which provides information related to their accounts receivable status.

They will be able to view open invoices and payment dates and will have access to information including invoice dates, invoice numbers, invoice status, invoice amounts, payments, credits, last payment dates and check numbers.

They can also select to view and print a copy of their delivery invoice with their signature, when using our **entrée.DOC** scanning system.

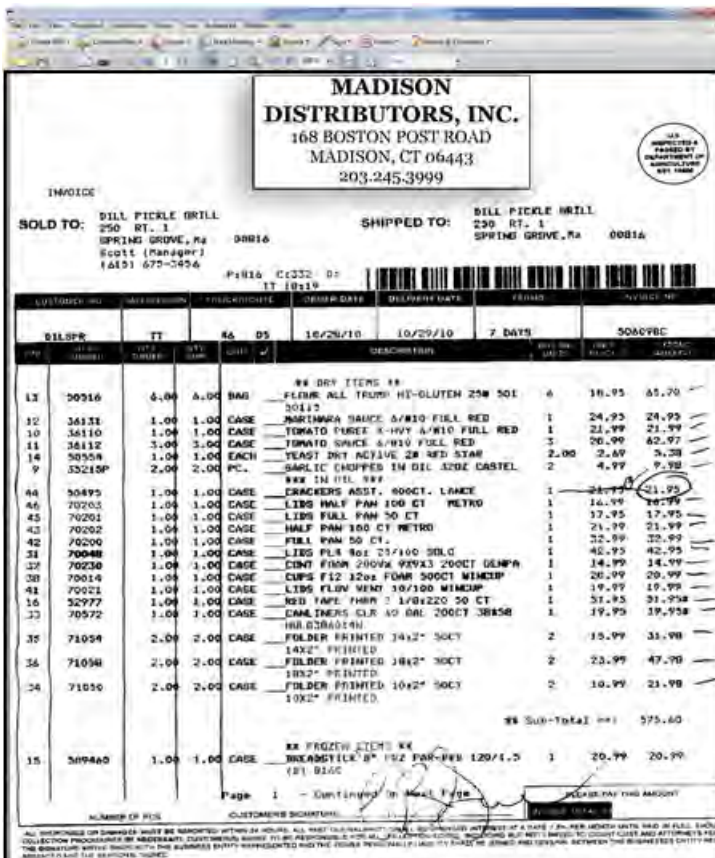


## View Scanned Invoices

Food distributors using the **entrée.DOC** (document scanning) software option, will show a paper clip icon in the Account Overview section which indicates that a scanned image of the invoice document is available for viewing.

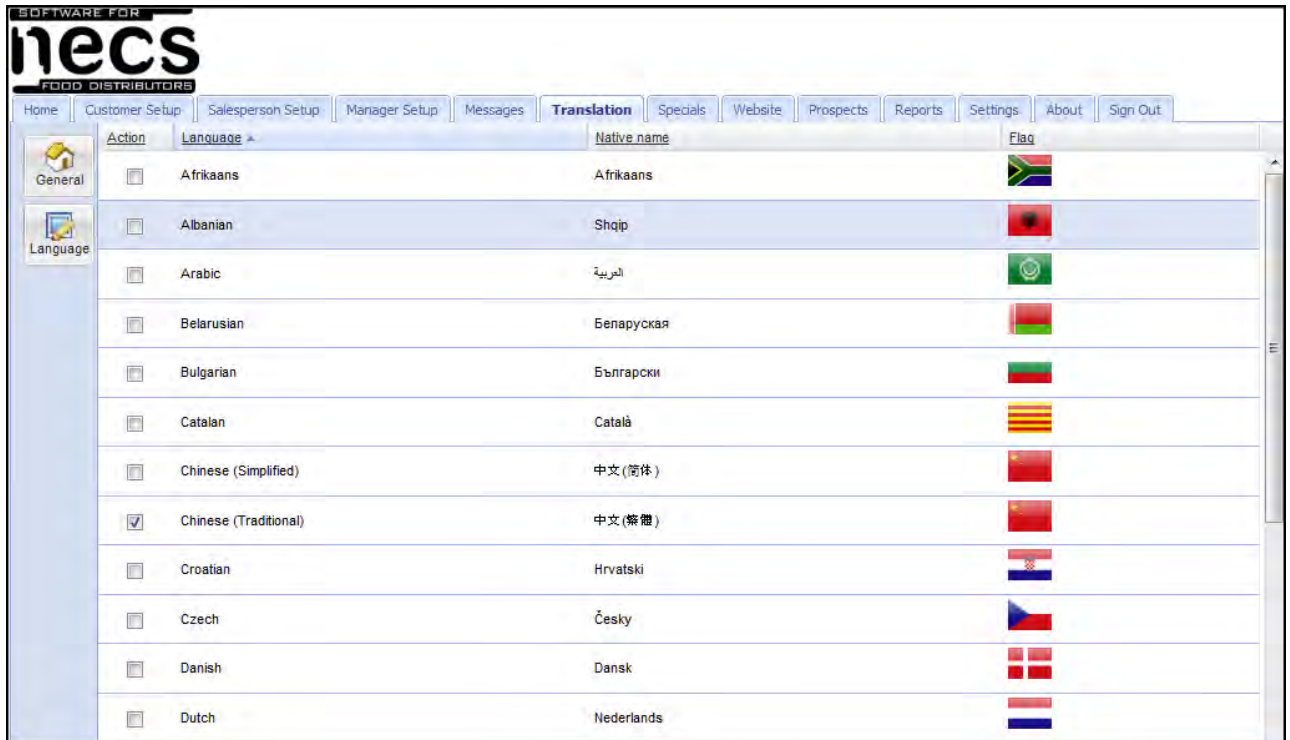
Clicking the paper clip icon will display the scanned invoice on the screen. The scanned invoice will display as a PDF document, and can be saved, printed or emailed.

A "Scanned Invoices" report is also provided to bulk view, print or email scanned invoices by date range and delivery location.



## Language Translator

The "Language Translator" option will allow your users entering orders online via **entrée.NET**, to view your item descriptions, class names and item notes, in another language besides English. They can also choose to have reports translated into the language of their choice.



Over 60 of the world's most popular languages are supported (including Spanish, Italian, Russian, Simplified Chinese and Traditional Chinese, to name a few).

Your user can easily change the language via a selection at the top right corner of their screen when this feature is enabled.

# Chapter 4

## entrée.NET: Create Order Features

---

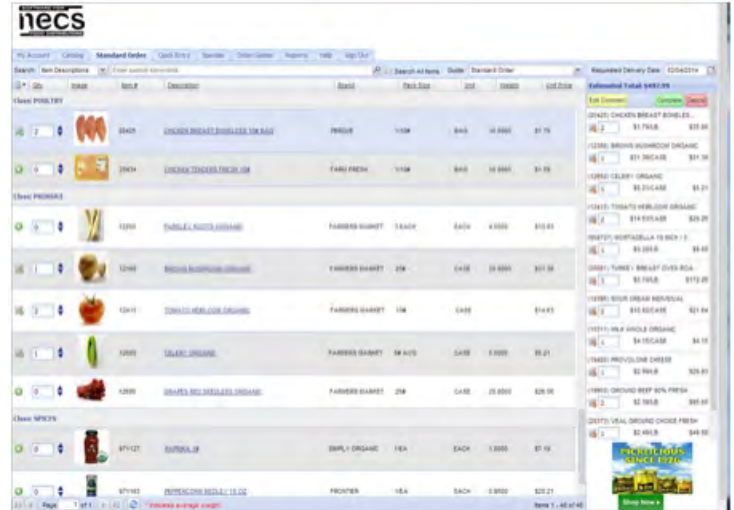
## 4 entrée.NET: Create Order Features

### Standard Order for Fast & Comprehensive Order Entry

The most important feature of entrée.NET is online order entry. The process is streamlined, fast and easy. NECS took great care when designing this experience for your users.

Features include speed to keep up with your users input, allowing the customer to tailor the layout of the screens to their needs, and a shopping cart that always is present. Using their sales history with our Standard Order concept, we've made it easy for them to remember all the items that they'll need.

Searching for items in your Product Catalog and Order Guides is always available from all sections of the order entry process. Customers may search by Item Description, Class, Brand or Item Number.

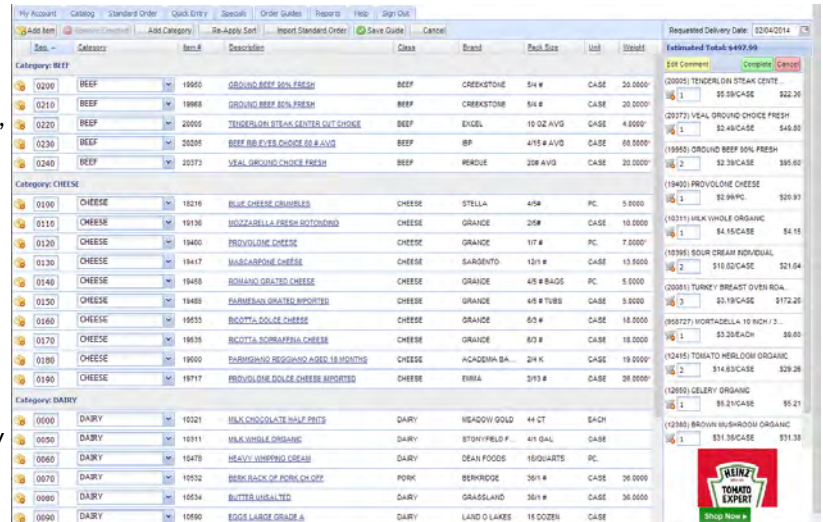


### Order Guides to Speed through the Ordering Process

The Order Guides option allows the setup of an unlimited number of targeted lists of items to make the ordering process easier and faster for each customer or DSR. They can be defined to provide specialized lists by department such as frozen foods, dry goods, canned goods, dairy, meat, seasonal, day of week, etc.

For each Order Guide defined, you can select specific items and the order sequence in which they will appear. To make defining Order Guides even easier, you can import an entire item category or the customer's Standard Order, and then just remove the items that are not applicable.

You can create Order Guides for each business location, making them perfect for franchises or multi-location customers with varying needs. Once created, your Order Guides can be easily copied, edited or deleted.



## Shopping Cart Always Available

The users Shopping Cart is always viewable on the right side of the screen. In the Shopping Cart, all the items ordered will be displayed. Users can easily remove items, as well as see an Estimated Total of their order.

Note that for catch weight items, the estimated total will use the average weight of the item in the price calculation. They can also change their requested delivery date, cancel the order, edit comments or complete the order from the Shopping Cart.

## Featured Brands & Vendors

The Featured Brands advertising option allows you to define the Brands and Vendors you would like to feature when a customer or DSR (logs in to place an order. The customer benefits by seeing items that they might not normally have exposure to and taking advantage of sale pricing that they might not have been aware of.

You can define unlimited Brand's to feature, and they will rotate as the user is placing their order on the bottom/right of the screen. When the user clicks either the "Shop Now" button, or anywhere on the Brand image, **entrée.NET** will then display all items of that Brand for the user to review and select to order.

Qty	Image	Item #	Description	Class	Brand	Pack Size	Unit	Unit Price	Weight
0	NO IMAGE AVAILABLE	50120	CAPELLINI 1# 20/1# BARILLA	20 PASTA	BARILLA	20/1#	CASE	\$25.95	20.0000
0	NO IMAGE AVAILABLE	50121	FUSILLI BUCATI CORTI #92 20/1# BARIL	20 PASTA	BARILLA	20/1#	CASE	\$25.95	20.0000
0	NO IMAGE AVAILABLE	50123	SPAGHETTI THIN #3 20/1# BARILLA	20 PASTA	BARILLA	20/1#	CASE	\$25.95	20.0000
0	NO IMAGE AVAILABLE	50124	SPAGHETTI THICK #7 20/1# BARILLA	20 PASTA	BARILLA	20/1#	CASE	\$25.95	20.0000
0	NO IMAGE AVAILABLE	50126	SPAGHETTI 5# 20/1# BARILLA	20 PASTA	BARILLA	20/1#	CASE	\$25.95	20.0000
0	NO IMAGE AVAILABLE	50126B	SPAGHETTI BULK #5 2/10# BARILLA	20 PASTA	BARILLA	2/10#	CASE	\$21.95	

Requested Delivery Date: 06/26/2012

Estimated Total: \$463.72

Total Cases: 12  
Total Weight: 12.00 lbs.

Min. Order Weight: 20.00lbs.

(201198) AL'S SLOPPY JOE MIX 4/...  
1 \$3.99/CASE \$47.88

(36090) PESTO 6/130GM COLAVITA  
1 \$24.95/CASE \$24.95

(36095) S.D. TOMATO 12/120GM T...  
1 \$35.95/CASE \$35.95

(37004) OLIVE OIL E.V.6/16.9OZ...  
1 \$38.95/CASE \$38.95

(37022) TRUFFLE OIL 6/8OZ COLA...  
1 \$49.95/CASE \$49.95

(37028) OLIVE OIL BLEND 75%-25...  
1 \$49.95/CASE \$49.95

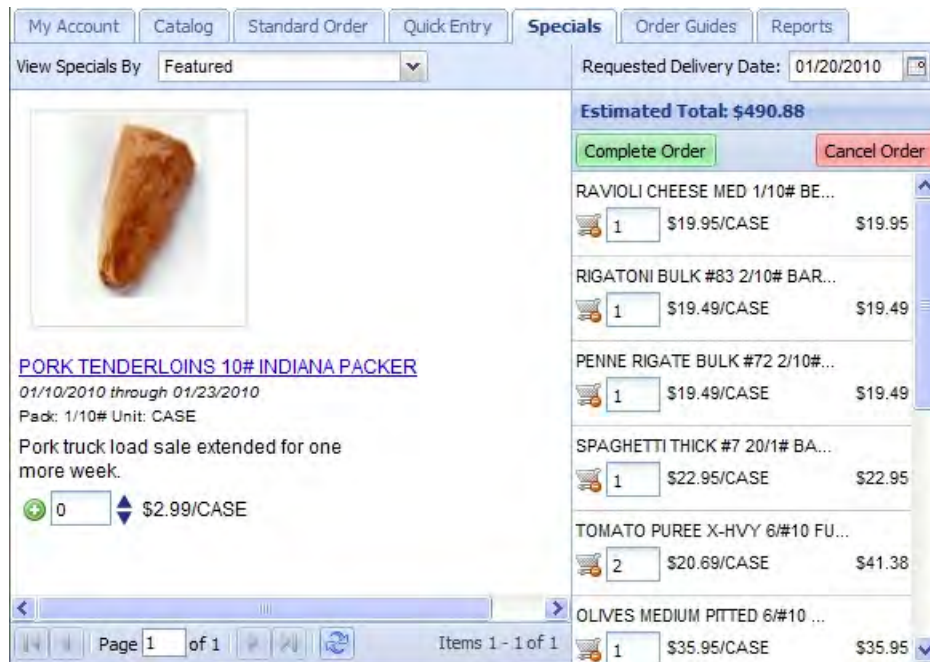
COLAVITA EXTRA VIRGIN OLIVE OIL

Shop Now

## Easily Communicate Item Specials & Promotions

Everyone loves a special and entrée.NET makes special pricing and promotions easy for your customers to find and take advantage of. Also the "View Specials By" drop down menu allows customers to select "All", "Featured" or a specific item class defined with specials.

Customers can view an informative list of all your specials, more detailed information about featured specials as well as see special offers as they enter their orders. Specials can also be emailed automatically to your customers.

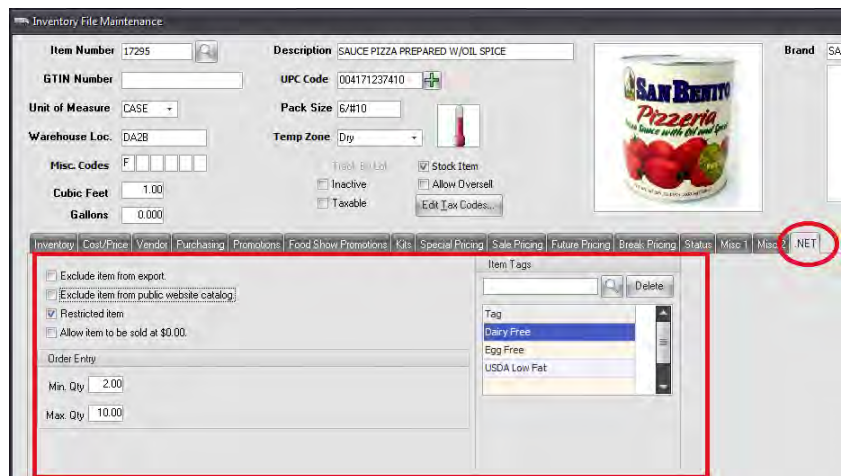


## Restricted Items, Min/Max Quantities & Other Item Situations Easily Handled

When using entrée.NET, you can easily manage special situations with your inventory. For example, items can be defined as "Restricted" so that they will not appear when placing an order, searching for items, etc.

However if a customer has a restricted item defined in their Special Price/Standard Order file, they will still be allowed to purchase it.

You can also enforce the purchasing of minimum and maximum quantities, and also create special exceptions to this rule by individual customer. Other situations include excluding items from your public website catalog and allowing items to be sold at no charge.



## Pending Orders Provide Informational Status of Order

The entrée.NET system makes it easy for your customers and DSRs to check on the status of all their recent and outstanding orders. They can see when the order is scheduled to be delivered, as well as edit an order that has not yet been transmitted to your warehouse. When customers check on the status of an order, four possible status codes will be displayed.

Inv Date	Inv No	Cust #	Stat	Inv Amt	Payment	Cred/Disc	Net Due	Bal Fwd	Last Pmt	Ref No	Scan
11-19-2009	927542	VALRES	OP	-\$43.80	\$0.00	\$43.80	\$0.00	\$0.00	07-11-2008	1403	
12-31-2009	955944	VALRES		\$164.40	\$164.40	\$0.00	\$0.00	\$0.00	07-01-2008	1382	
01-01-2010	956791	VALRES		\$126.88	\$126.88	\$0.00	\$0.00	\$0.00	07-02-2008	1386	
01-02-2010	957657	VALRES	CM	-\$94.50	\$0.00	\$94.50	\$0.00	\$0.00	07-11-2008	CR. MEMO	
01-03-2010	958582	VALRES		\$417.57	\$417.57	\$0.00	\$0.00	\$0.00	07-07-2008	1403	

## Email Notification of Orders

After an order has been completed, the entrée.NET system will send an email confirmation to the customer, the DSR and your system administrator.

The format of the email notification can be customized and it includes all the line items purchased with quantities and pricing. It will include an "Estimated Total" as the exact quantities and/or catch weights to be delivered are not known at this time.

When calculating pricing extensions on catch weight items, the system will use the items "Average Weight".

Customer No.	Order Number	Customer Purchase Order	Order Date	Req. Delivery Date	Invoice No.		
ANN30	100028	Verbal	07/06/2012	02/08/2013	PENDING		
Item Number	Qty Ord	Unit Meas	Pack Size	Description	Brand	Unit Price	Estimated Ext. Amount
40706	1.00	CASE	1/15DOZ.	EGGS LARGE CARTON 15DOZ	LAND O LAKES	21.55	21.55
30148	1.00	CASE	6/10	TOMATO SAUCE	PARADE	17.90	17.90
30305	1.00	CASE	35#	VEGETABLE OIL CLEAR FRY	PARADE	10.45	10.45
20658	3.00	CASE	5#	SAUSAGE FRESH ITALIAN*	JOHNSONVILLE	1.95	29.25
10500	1.00	CASE	12/2#	BROCCOLI SPEARS	GREEN GIANT	17.45	17.45
10337	2.00	CASE	6/5#	FRIES REG 3/8*CUT	NORWESTERN	12.50	25.00
10117	1.00	CASE	1/10#	CHICKEN STRIPS BREADED	PARADE	28.80	28.80
** CREDITS **							
20658	-1.00	CASE	5#	SAUSAGE FRESH ITALIAN*	JOHNSONVILLE	1.95	-9.75
Pricing is estimated and subject to change.							<b>Estimated Total</b> 140.65
<b>Comments for distributor:</b> DOUBLE CHECK EVERYTHING...							



**Online Order**  
Printed: 02/06/2013 08:07 AM  
Status: Pending transfer to distributor.

MADISON FOODS  
168 Boston Post Road  
MADISON, CT 06443  
Phone: (203) 245-3999  
Fax: (203) 245-4513

**Bill To:**

ANN SAND ENTERPRISES  
2419 WEST ST  
SALEM, MA 01912

**Ship To:**

ANN'S RESTURANT  
51 SOUTH ADEMA LN  
GLOUCESTER, MA 01956

# Chapter 5

## entrée.NET: DSR Features



## 5 entrée.NET: DSR Features

### Your DSRs Have Access to All Their Customer Accounts

Your DSRs (Distributor Sales Representatives) can take full advantage of **entrée.NET** anywhere an Internet connection is available, whether from the office, at home or on the road. You have many options to give your DSRs control over customer accounts and product pricing.

Each DSR can view and place orders for all their customers. You can turn on the "Sales Manager" feature, and allow a DSR to view and place orders for all, not just their assigned customers.

You can also allow them to setup **entrée.NET** accounts for their customers including the assignment of usernames and passwords to facilitate the customer's use of **entrée.NET** to be as quick as possible.

Customer ID	Company Name	Address	City	State	Phone
ANGOON	ANGELO PIZZA	1003 CURTIS STREET	DONNERS GROVE	IL	60515 (630) 969-4396
ANTER	ANTHONY-BERYVIN	6237 CERMAK	BERWYN	IL	60402 (708) 749-1100
CANORA	CANNELLA'S ON GRAND	1132 W. GRAND AVE	CHICAGO	IL	60622 (312) 433-9400
CINLAK	CINO'S ENTERPRISES	6 MILLER ROAD	LAKE IN THE HS	IL	60156-1000 (815) 477-3300
FELLI	FELLI	1725 W. GOLF RD.	MT. PROSPECT	IL	60056 (847) 593-9181
GIACES	GIACOMO RISTORANTE	740 N WOLF RD	DES PLAINES	IL	60018 (847) 390-7330
GOBEL	GIACOMINO'S	5201 ST. CHARLES RD	BELMONT	IL	60104 (708) 544-0300
GUPIN	GULLIANO'S	40 VILLAGE PLACE	IRSALE	IL	60521 (830) 734-1500
LUOLAG	LUCCA'S RISTORANTE	109 WEST BURLINGTON	LA GRANGE	IL	60525 (708) 354-9999
LUXOHO	LUPES-HARLEM	3130 N HARLEM AVE	CHICAGO	IL	60634 (773) 869-4000
MAASTR	MANA'S HOT DOGS	1102 C. IRVINGPARK RD	STREAMWOOD	IL	60107 (630) 289-2226
OLDES	OLIVETI	1575 ELLENWOOD	DES PLAINES	IL	60016 (847) 259-5090
PASMEZ	PASTA MIA-SOUTH BLOW	375 EAST STATE ST.	SOUTH BLOW	IL	(847) 468-0033
PASMA	PASTA MIA-BARTLETT	116 BARTLETT PLAZA	BARTLETT	IL	60103 (630) 736-1290
PIAPOS	PIAZZA BELLA TRATTORIA	2114 W. ROGOCCE STREET	CHICAGO	IL	60618 (773) 477-7326
ROFARDO	ROBY'S	701 W. LAKE ST.	ADDISON	IL	60101 (630) 543-3101
RUSHOL	RUGSO WHOLESALE	12306 S CICERO	ALSO	IL	60598 (708) 385-0200
TERHAD	TIMMY'S PLACE	5960 W MADISON	CHICAGO	IL	60630 (773) 379-0416

### Price Editing When Creating Customer Orders

When your DSR enters a customer order with **entrée.NET**, if you choose, you can provide them with the ability to edit the pricing on the order. Normally the pricing which automatically comes up on the customer's order is correct, as it follows the many rules for pricing that you establish for the customer in your main **entrée** system.

However, if you prefer a DSR the flexibility to edit prices, **entrée.NET** allows them to edit pricing, but they must be above the defined Minimum Sell Price for the item.

Also, besides typing a price directly in, they can optionally enter a percent and the system will calculate the sell price over the items defined Base Cost. This new pricing can be automatically saved for the next time that item is ordered by the customer.

Qty	Item #	Description	Brand	Pack Size	Unit	Weight	%	Base Cost	Unit Price
1	19976	TOP SIRLOIN STEAK FRSH CHOICE 10 OZ	EXCEL	20#/CASE	CASE	20.0000*	5.96	\$2.05	\$2.18
0	20005	TENDERLOIN STEAK CENTER CUT CHOICE	EXCEL	10 OZ AVG	CASE	4.0000*	6.03	\$4.99	\$5.31
1	20205	BEEF RIB EYES CHOICE 60 # AVG	IBP	4/15 # AVG	CASE	60.0000*	5.95	\$4.90	\$5.21
1	20373	VEAL GROUND CHOICE FRESH	PERDUE	20# AVG	CASE	20.0000*	5.79	\$1.79	\$1.80
0	20633	SHORT LOIN 1X1 DEF. (BONE IN)	FRESH CATCH	10#/CS	LB.	1	5.88	\$3.97	\$4.22
2	963870	BEEF SUMMER SAUSAGE 7 OZ	DIETZ & WATSON	24/CS	CASE	10.5000	6.00	\$67.88	\$72.21
1	52026	WATER SPARKLING	SAN BENEDETTO	12/1 LTR	CASE		6.93	\$10.75	11.55
1	520270	WATER NATURAL	SAN BENEDETTO	6/1.5 LT	CASE		5.85	\$6.95	\$7.38
1	52028	ICE TEA PEACH	SAN BENEDETTO	12/500 ML	CASE		6.02	\$7.50	\$7.98

### Customer Prospecting Tools to Earn New Business

An important feature for your DSRs using **entrée.NET** is to provide them with a set of tools to manage and prepare quotes for potential customers or prospects. DSRs can create, edit, and delete prospect accounts and create Prospect Guides to provide price quotes. Prospect Guides can be printed or emailed to the potential customer.

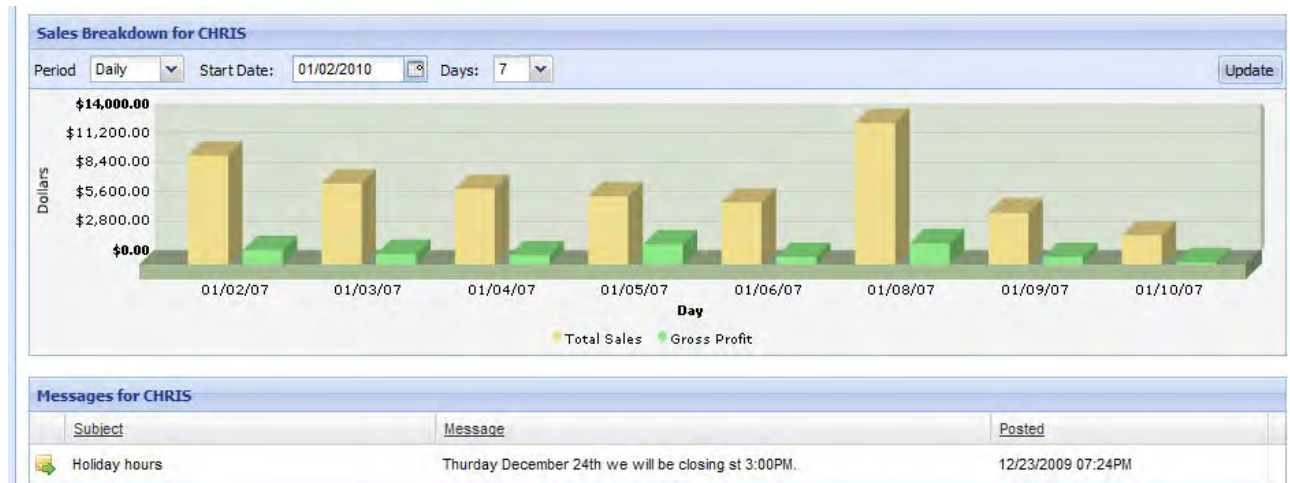
The Prospect Guide is very similar to the Order Guide feature provided for customers in **entrée.NET**. The prices in the prospect guide can be edited as required by your DSRs.

A key element of the prospects feature is the ability to easily convert a prospect into a regular customer account in the main **entrée** system. A designated "Prospects Manager" is allowed to convert prospect accounts to live customer accounts.

Item #	Item Name	Unit Price	Description	Unit	Brand	Unit Size	Unit	Stock
49	BEEF	20.00	BEEF BRN/FLY CHOICE 4L # AVG	BEEF	BF	415 # AVG	CASE	80.0000
50	BEEF	19.99	ORGANIC BEEF 80% FRESH	BEEF	CREEKSTONE	5/4 #	CASE	28.0000
110	BEEF	11.30	ANGUS GROUND BEEF PATRIS 80% FRESH	BEEF	CREEKSTONE	105CS	CASE	15.0000
10	CHEESE	32.00	BLUE CHEESE CRUMBLED	CHEESE	STELLA	45#	PC	5.0000
50	CHEESE	32.24	MOZZARELLA SHREDDED	CHEESE	GRANDE	85#	CASE	38.0000
60	CHEESE	32.72	PROVOLONE CHEESE	CHEESE	GRANDE	117 #	PC	7.0000
70	CHEESE	31.60	ROMANO GRATING CHEESE	CHEESE	GRANDE	45 # BAGS	PC	5.0000
90	CHEESE	31.50	SWISS CHEESE CURD	CHEESE	FARM FRESH	20#	EACH	18.0000
190	CHEESE	32.48	SHREDDED 4-CHESE BLEND REDUCED FAT	CHEESE	SARGENTO	85#	CASE	38.0000
80	DESSERTS	30.50	CHEESECAKE TURTLE 13 SLICES	DESSERTS	GOOD AND RICH	190 OZ	CASE	
200	PRODUCE	13.22	WATERCRESS 12CT	PRODUCE	FARMERS MARKET	12CT	CASE	
210	PRODUCE	13.80	PARSLEY ROOTS ORGANIC	PRODUCE	FARMERS MARKET	3 EACH	EACH	4.0000
220	PRODUCE	12.38	WATER ASPARAGUS SPARS	PRODUCE	FARMERS MARKET	4EA	EACH	4.0000
230	PRODUCE	13.10	BROCCOLI HEADS ORGANIC	PRODUCE	FARMERS MARKET	20#	CASE	28.0000
240	PRODUCE	13.80	TOMATO HERBLOOM ORGANIC	PRODUCE	FARMERS MARKET	10#	CASE	
250	PRODUCE	12.95	BLACKBERRY ORGANIC	PRODUCE	FARMERS MARKET	5# AVG	CASE	5.0000
260	PRODUCE	13.87	CHILI PEPPERS RED ORGANIC	PRODUCE	FARMERS MARKET	10#	CASE	18.0000
270	PRODUCE	13.80	BUTTER ORGANIC	PRODUCE	FARMERS MARKET	10# AVG	CASE	
280	PRODUCE	10.21	ZELNY ORGANIC	PRODUCE	FARMERS MARKET	5# AVG	CASE	5.0000
20	SEAFOOD	16.00	ARTURO LOBSTER	SEAFOOD	FRESH CATCH	8 OZ	LB	1

### Sales Breakdown Chart

Your DSRs can view graphs within **entrée.NET** detailing their sales on a daily, weekly or yearly basis, as well as gross profit. This is a simple yet informative option to quickly let the DSR analyze their sales performance.



# Chapter 6

## entrée.NET: Reports



## 6 entrée.NET: Reports

### Reporting with 13 Months of Sales History

Your customers and sales team will love taking advantage of all the reporting features that **entrée.NET** provides, including up to 13 months of customer sales history always being available when generating reports.

All reports can be fully customized to provide control over data fields, data field order and filtering, as well as sorting and grouping on select fields.

Multiple filters can be defined per report to give your customers the exact info they need. "Bill To" master accounts can report on all or individual "Ship To" locations and custom report configurations can be created, named and saved for repeated use.

Report styles include:

- **Invoice Detail** - Customer purchasing details by item.
- **Invoice Summary** - Customer purchasing details summarized by invoice.
- **Inventory Worksheet** - Report to aid customer in ordering process.
- **Scanned Invoices** - Report showing scanned/signed customer invoices.
- **Item Consumption** - Customer purchasing details by item with additional consolidated filtering options.
- **Order Guide / Product Listing** - Customer Order Guides and Price Lists.
- **Open Balances** - Open invoices for customers similar to an AR customer statement.
- **Usage by Brand** - Customer purchases by Brand.
- **Prospect Price Quotes** - Quoted pricing per item for customer prospects.
- **Prospect Listing** - Listing of customer prospects not yet converted to live customers.

# Chapter 7

## entrée.NET Website Catalog



# 7 entrée.NET Website Catalog

## Beautiful Websites for the Unique Needs of a Food Distributor

Your website is one of the most important marketing and communications tools you can have for your business. That's why you need a company experienced with web design which understands your unique needs. With an NECS designed website, your company will stand out from the crowd, blending your vision and our creativity. While other web designers produce websites that contain static information that doesn't change (without large fees for every time they update your site), our websites fully integrate with your **entrée** software. So as your product line grows and changes, your website's online catalog can reflect those changes automatically in minutes. And for the ultimate customer experience, when your website is connected to our **entrée.NET** system, your customers can log in and place orders, view their open accounts receivable, generate reports, view scanned invoices and more.

### You Control Your Site

Not only can NECS create a site that will set you apart from your competition, but we give you the ability to maintain it yourself.

You'll have the ability to change images, update the content of your "Welcome", "About Us", "Contact", "Blog" and "Directions" pages.

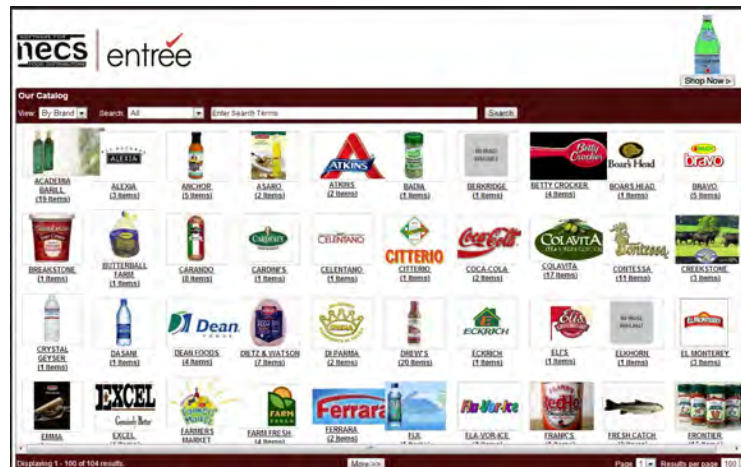
You will be able to automatically post your inventory list and specials, from your NECS **entrée** software, directly to your website, as often as you'd like.



### Always Fresh Catalog

With an NECS designed website, you'll always have available your latest product catalog for your customers and potential customers to view and search for items.

Your product catalog is automatically updated from your **entrée** software, so there is never a need to contact a web developer to keep your product catalog fresh.

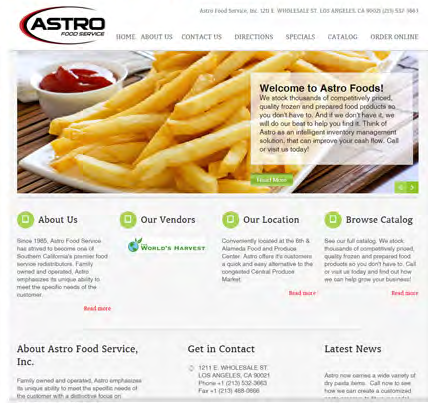


## Our Portfolio

Below is a sampling of some live websites which we have created for our customers. Take a look, give them a try and then contact us to help you begin the process for your food distribution company.

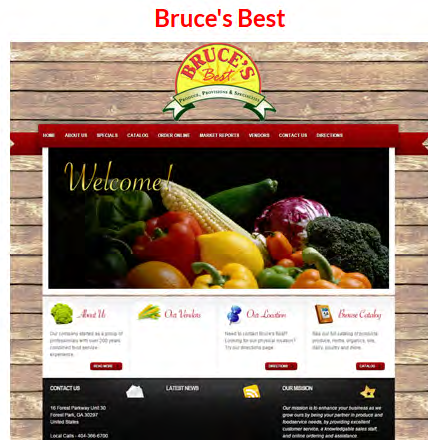
[www.meritfoods.net](http://www.meritfoods.net)

[www.astrofoodservice.com](http://www.astrofoodservice.com)



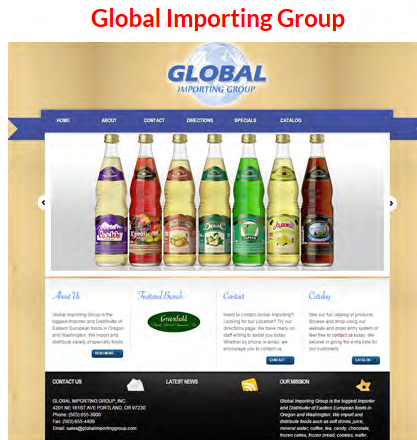
[www.alexisfoods.com](http://www.alexisfoods.com)

[www.brucesbestinc.com](http://www.brucesbestinc.com)



[www.globalimportinggroup.com](http://www.globalimportinggroup.com)

[www.nwdeli.com](http://www.nwdeli.com)



**NECS, Inc.** 322 East Main Street Third Floor Branford, CT 06405  
**Office Hours:** Monday - Friday from 8:30AM EST - 5:30PM EST  
**Toll Free:** 800.766.6327 (NECS)

Please visit our website at [necs.com](http://necs.com) to learn about our other add-on modules, products and services. Contact our **NECS Sales Department** at [sales@necs.com](mailto:sales@necs.com) for more information.