



# Features Flash

**January 10, 2012**

**entree.UPC Version 3**

# Table of Contents



entrée.UPC Automatic Lot Tracking	3
entrée.UPC Administrator Menus Purge entrée.UPC Data Files Utility Purges & the Bioterrorism Act of 2002	4
Edit Bar Code Definition Utility	5 - 7
Lot Numbers Product Recalls & Bar Code Definitions	7
List Definitions Feature	8
entrée.UPC Preferences: Apply Edit Locks During Scanning Option, Always Repost Data When Closing Documents Option	9
“New SOLO Invoice” Feature Retired Hold for Scanning Feature Shorted Items Review Process	10
Physical Inventory Process Redesigned	11 - 12
Cycle Count Feature	13
entrée.UPC User Log-in entrée User Accounts	14
New entrée Security System User Settings entrée Edit Interlocks	15 16
Reports for entrée.UPC: Product Recall, UPC Activity Log, Receiving Detail & Invoicing Detail	17 - 21
The GS1 Bar Code Standard Overview	22 - 24
Tips on Scanning the GS1 Bar Code	24
Need More Information?	24
About NECS	25

**entree<sup>®</sup>.UPC**

STREAMLINE YOUR WAREHOUSE OPERATION  
WITH BAR CODES

- ✓ No need to re-label inventory. Will scan and properly read anyone's barcode
- ✓ Eliminates the need to write down and enter catch weights
- ✓ Eliminates order picking problems while reducing employee overtime and staff
- ✓ Makes your warehouse crew's job easier and faster



## Features for the System Administrator



- **entree.UPC Automatic Lot Tracking**

The new Food Safety Modernization Act (FSMA), signed into law in 2011, is having and will continue to have a seismic impact on the global food supply chain. This is in addition to the Bioterrorism Act of 2002.

Growers, processors, wholesalers, and retailers must be prepared to meet the new regulations or face large fines and possibly closure.

The law, passed by a large bipartisan majority in Congress, gives the Food and Drug Administration unprecedented new powers of enforcement, inspection, and forced recall.

Because of this, it was especially important that we include lot tracking features that will keep our customers in adherence to this new law and the freedom of mind that they are fully prepared in case of a product recall.

Version 3 of **entree.UPC** includes a simple, yet highly effective means for automatically tracking lots, even if you do not use the Lot Tracking features of **entree**.

When designing this new version, we interviewed NECS customers using **entree.UPC**, and presented some ideas for how lot tracking could work.

Some ideas involved re-labeling inventory, which turned out to not be cost or time effective.

Other ideas involved forcing the distributor to convert all of their items to be tracked by lot, while strictly using the manufacturer's lot number. This also turned out to not be the ideal solution, as it would add too much additional work for the distributors warehouse and office staff.

Instead, we finally settled on the method where the lot number (or production date) encoded in the barcode label, would become the traceable lot number, without any additional efforts by the distributor. See page 7 of this document for information about defining the lot number.

To put it simply, when inventory is received, the scanned lot number in the label is recorded (along with all other key information). When the product is sold, the lot number in the scanned label is recorded.

Finally, a new "Product Recall" report was added, so that you can quickly locate recalled lots. See page 18 of this document for an example of the report.

NECS feels that this simple, yet effective method will allow you to properly track lot numbers and adhere to the new government regulations.

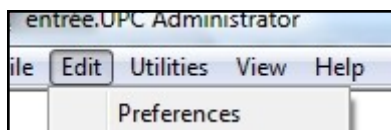
## Features for the System Administrator

The **entrée.UPC Administrator** application is used to maintain **entrée.UPC** and is run on the host computer via this desktop icon.

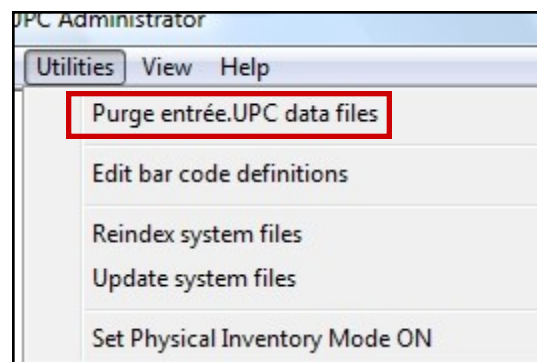
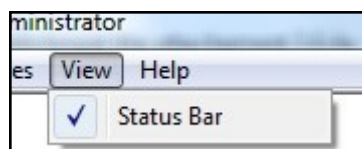


- The **entrée.UPC Administrator Utilities** menu displayed here is where you access the features for maintaining the data files.

- The **entrée.UPC Administrator Edit** menu.

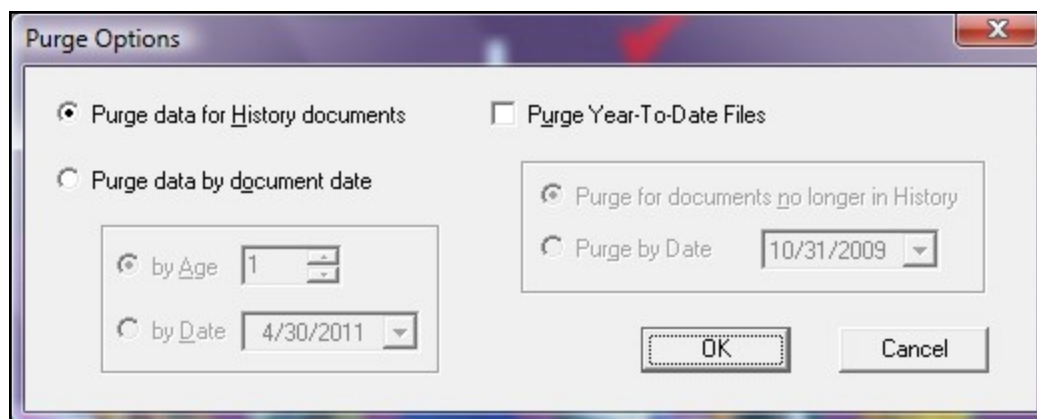


- The **entrée.UPC Administrator View** menu.



- **Updated "Purge entrée.UPC data files" Utility:**

The **Purge Options** dialog has been updated to include a design similar to what is used in the main **entrée** system with "current" and "history" file purge options. During the purge operation you can choose when to permanently purge information from your system. This final purge defaults to a cutoff of two years. Since the data retention period for some products is as short as six months, the purge value can be changed to retain more or less data as required for your business.



### **Purges & the Bioterrorism Act of 2002:**

The Bioterrorism Act of 2002\* authorizes the Secretary of HHS, acting through the FDA, to issue regulations to protect the Nation's food and drug supplies against bioterrorism and food-borne illness. The data retention requirements of the Bioterrorism Act specify that product-tracing data must be retained for as long as two years for certain types of products. Keeping two years of scan data in your active data file would degrade the performance of the scanning process so in version 3 we created a new design that pushes the older data into a "history" file. This design keeps the size of the data files used for day-to-day activities to a manageable size while meeting the data retention requirements in a readily available historical data file.

\*Source [www.fda.gov - Bioterrorism Act](http://www.fda.gov - Bioterrorism Act)

## Features for the System Administrator



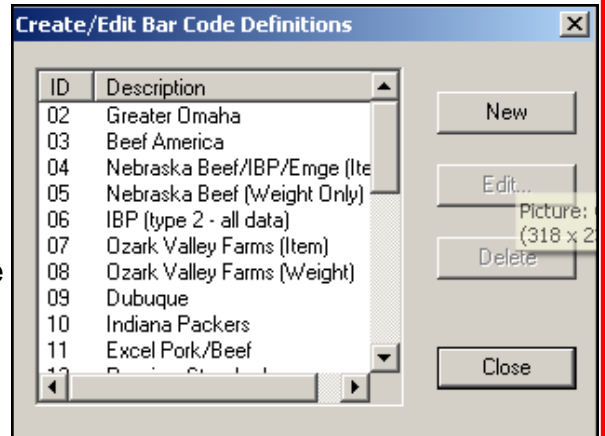
- **Utility to Edit Bar Code Definitions:**

The Edit bar code definition utility opens the **Create/Edit Bar Code Definitions** dialog box. Your options are:

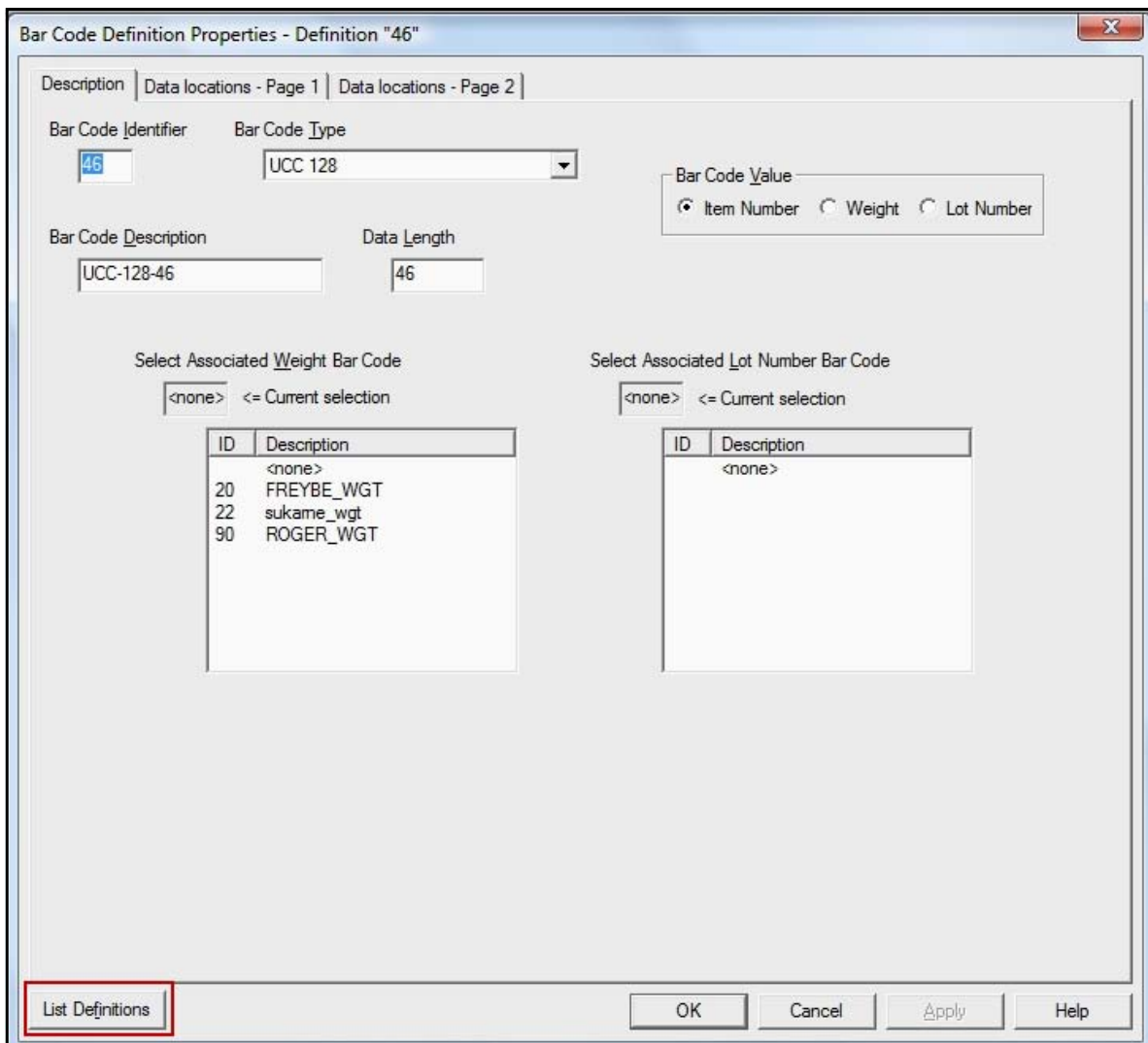
1. **New** - To add a new bar code definition.
2. **Edit** - To modify an existing bar code definition.
3. **Delete** - To remove an existing bar code definition.

The Bar Code Definition Properties dialog will be used to edit or create new definitions. You will enter or edit information in 3 tabs: Description, Data Locations - Page 1 and Data Locations - Page 2.

Once you click **Edit** the Description tab with the new **List Definitions** button will be displayed (see page 8 for more information about List Definitions).



You have these fields from the GS1 Bar Code standard to enter in the **Description** tab: Bar Code Identifier, Bar Code Type, Bar Code Value, Bar Code Description, Data Length, Associated Weight Bar Code and Associated Lot Number Bar Code.



## Features for the System Administrator

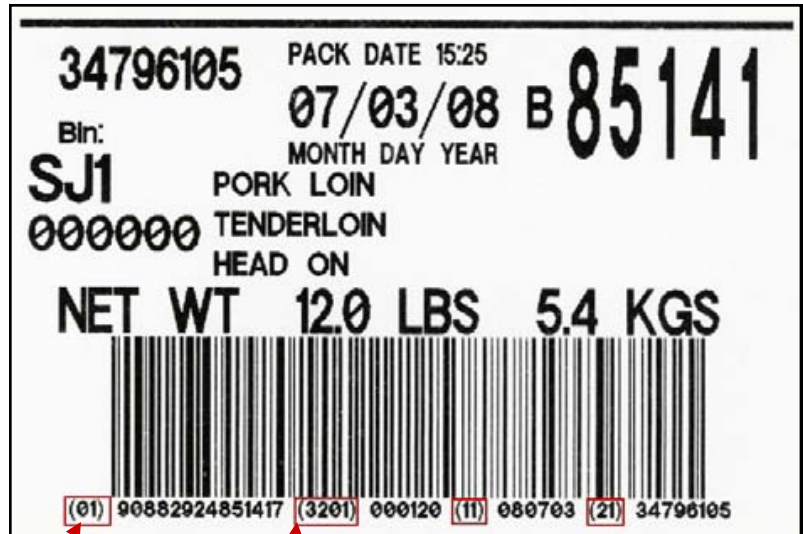


- **Edit Bar Code Definition Utility:**

The "Edit bar code definitions" utility **Data Locations - Page 1** tab contains the following information: Item Number, Serial Number, Weight and Manufacturer ID locations which are identified and defined on this tab.

The label on the right uses the GS1 Bar Code standard. The Application Identifier fields, which are always enclosed in parenthesis, have been outlined in red. You can see three of the Application Identifier field values in the GS1 bar code label defined in the **Data Locations - Page 1** tab image below.

For more information about the GS1 Bar Code standard and Application Identifiers see pages 22 - 24 of this document.



Bar Code Definition Properties - Definition "46"

Description: Data locations - Page 1 | Data locations - Page 2

**Item Number**

Start: 5, End: 15, Length: 11

"Item Number" is:

Vendor Item Number  
 UPC Item Number  
 Inventory Item Number

**Item Number Identifier**

Start: 1, End: 2, Length: 2

Identifier Value: 01

**Weight**

**Weight Integer**

Start: 21, End: 25, Length: 5

**Weight Decimal**

Start: 26, End: 26, Length: 1

**Weight Identifier**

Start: 17, End: 20, Length: 4

Identifier Value: 3201

Weight value is in kilograms

**Serial Number**

Start: 37, End: 46, Length: 10

**Serial Number Identifier**

Start: 35, End: 36, Length: 2

Identifier Value: 21

**Manufacturer's ID**

Start: , End: , Length:

Manufacturer's ID Value:

List Definitions | OK | Cancel | Apply | Help

## Features for the System Administrator



- **Edit Bar Code Definition Utility:**

Below is the **Data Locations - Page 2** tab which supports four new date values in the GS1 Bar Code standard: Production Date, Packaging Date, Sell By Date and Expiration Date.

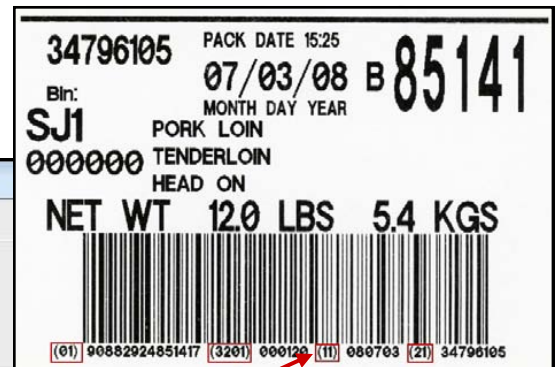
- **Lot Numbers:**

Since one of these dates can either officially or unofficially be used as the item's "Lot Number", the field definitions for these date values include a check box which allows you to designate one of them to be recorded as the "Lot Number" value for the scan (the images show the relationship between the GS1 bar code label Application Identifier field and the Production Date definition).

The system will record the "Lot Number" and "Serial Number" information in the bar code data when scanned if the fields exist **and** if the fields are specified in the bar code definition.

- **Product Recalls & Bar Code Definitions:**

A product recall can be issued against any of the data values present in a bar code, so it would be beneficial to define the "Lot Number" field in the bar codes that provide one, along with any of the four date fields listed above. Defining and scanning for this bar code data will enhance your businesses ability to trace all activity on a given product using a report (see pages 18 for information about this report). This enables you to respond quickly in the event of a product recall.



Bar Code Definition Properties - Definition "46"

Description | Data locations - Page 1 | **Data locations - Page 2**

**Lot Number (Production Date)**

Start: 29, End: 34, Length: 6

Lot Number Identifier: Start: [ ], End: [ ], Length: [ ], Identifier Value: [ ]

**Production Date**

Use this value as "Lot Number"

Start: 29, End: 34, Length: 6

Production Date Identifier: Start: 27, End: 28, Length: 2, Identifier Value: 11

**Packaging Date**

Use this value as "Lot Number"

Start: [ ], End: [ ], Length: [ ]

Packaging Date Identifier: Start: [ ], End: [ ], Length: [ ], Identifier Value: [ ]

**Sell By Date**

Use this value as "Lot Number"

Start: [ ], End: [ ], Length: [ ]

Sell By Date Identifier: Start: [ ], End: [ ], Length: [ ], Identifier Value: [ ]

**Expiration Date**

Use this value as "Lot Number"

Start: [ ], End: [ ], Length: [ ]

Expiration Date Identifier: Start: [ ], End: [ ], Length: [ ], Identifier Value: [ ]

List Definitions | OK | Cancel | Apply | Help

## Features for the System Administrator



- **New List Definitions Feature:**

Below is the “Bar Code Definitions” screen which displays a list of all defined bar codes in your system when you click the **List Definitions** button from the **Edit Bar Code Definition** utility.

The **List Definitions** button allows you to review the properties of all your existing bar code definitions in one screen. You can easily examine bar code definitions for errors or compare bar code definitions to help you resolve conflicts.

ID	Description	Type	BC_VAL	BC_DATA_L	ITEM_TYPE	BC_ITEM_S	BC_ITEM_L	BC_WGHT_S
50	Code 39, Length 6	Code 3 of 9 (Code 39)		6	V	1	6	
23	3of9_22_su	Code 3 of 9 (Code 39)		22	V	1	3	4
AB	EAN-13_MDL	EAN-8		13	V	9	4	0
34	Interleaved 2 of 5, Length 6	Interleaved 2 of 5		6	V	2	5	
15	2 OF 5 14 ROSE	Interleaved 2 of 5		14	U	1	14	0
30	Interleaved 2 of 5, Length 14	Interleaved 2 of 5		14	V	9	5	
52	UCP-A-11-BUENO	UPC-A		11	U	1	11	0
04	UCC128-4	Code 128		4	U	1	4	0
20	FREYBE_WGT	Code 128	w	5	V	4	2	1
17	FREYBE_ITEM13	Code 128		13	V	1	6	0
24	ucc_128_22_suk	Code 128		22	V	1	3	4
AC	ucc_128_22_swilt_wagyu	Code 128		22	U	1	6	7
99	UCC_128DE	Code 128		25	V	22	3	0
91	ROGER_UCC_128	Code 128		29	V	13	6	0
98	ucc_128_29_nz_den_leg	Code 128		29	V	24	6	9
BQ	UCC_128_29_BPI	Code 128		29	U	22	8	18
18	Code 128, Length 30	Code 128		30	V	11	5	25
BP	UCC_128_30_BPI	Code 128		30	U	23	8	18
AR	ucc_128_31_rogers	Code 128		31	V	13	8	0
16	Code 128, Length 36	Code 128		36	V	15	5	24
97	ucc_128_38_farm	Code 128		38	V	11	6	21
72	ucc128-40-gustoham	Code 128		40	U	4	12	27
42	UCC-128-42-FREY	Code 128		42	U	5	11	29
12	ucc_128_44_newstr	Code 128		44	U	6	10	29
61	ucc_128_44_amt	Code 128		44	V	11	6	29
64	ucc128-44-pklg	Code 128		44	U	4	12	29
68	UCC_128_STR	Code 128		44	V	11	6	29
83	UICC_128_OW	Code 128		44	V	12	5	29
84	UCC_128_SRF	Code 128		44	V	12	5	21
93	ucc_128_44_waygu_gb	Code 128		44	V	11	6	25
55	ucc_128_46_norb	Code 128		46	U	11	6	33
73	ucc128-46-clover	Code 128		46	U	6	11	29
74	UCC128-46-AMITY	Code 128		46	U	4	12	29
21	UCC128-47	Code 128		47	U	3	14	30
47	UCC-128-47-FIO	Code 128		47	U	5	11	21
14	ucc_128_48_carolina	Code 128		48	U	6	11	21
33	code_128_af	Code 128		48	U	3	14	21
94	ucc128_56_farm	Code 128		56	V	11	6	23

## Features for the System Administrator



### entree.UPC Preferences

- **NECS common files:** Use the **Browse** button to find the directory where your **entree** system data files are stored. The recommended location for common files is shown in the image.

### Misc. Options

- **Omit "Skipped" Items in Diagnostic Utility:**

With this option checked when the Diagnostic Utility is run on the RF terminal by the operator any items skipped during the scanning process will be bypassed when viewing utility results.

- **Apply Edit Locks During Scanning:**

**entree.UPC** version 3 implemented support for the **entree** "edit interlock" feature. Accessed via the **Edit > Preferences** menu, checking this option which will prevent multi-terminal access to the same document during scanning. (See page 16 to learn about the Edit Interlocks features in the main **entree** system.)

If the "Apply Edit Locks During Scanning" option is disabled (not checked) then the handling of the interlocks will be changed so that **entree.UPC** will respect the locks placed by **entree**, but **entree.UPC** itself will *not* place any locks.

Although not supported by the **entree.UPC** system, some distributors will assign multiple terminal operators to the same document at the same time. (We do *not* recommend this as standard practice, it can work if done *very* carefully.) Having this capability creates a situation where an **entree** user would also be able to open the document and make changes to it while it is in the process of being scanned.

If you normally use the "Edit Interlock" feature in the main **entree** System Options Additional Features section, but then choose to bypass locks in the **entree.UPC** system, you will need to have manual procedures in place which will control when an **entree** user is allowed to make changes to a document and when they should avoid opening it.

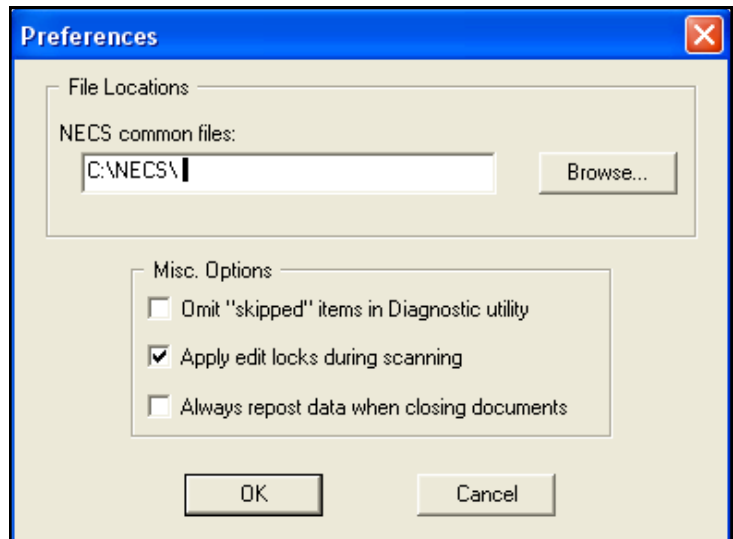
- **Always Repost Data When Closing Documents:**

In previous versions of **entree.UPC** any time a document was opened and then closed, all the available scan data (if any) would be posted back to **entree**.

The problem that could occur is that someone would accidentally open the wrong document which could result in all the "Ship" quantities being prematurely set to **zero** if nothing had been scanned on that document yet.

Since the zero quantities could sometimes create problems for other parts of the **entree** system a change was made in version 3 so that nothing would be reposted to **entree** unless at least one item was entered or scanned while the document was open.

Since some distributors found the old behavior useful, so activating the "Always repost" option will restore the behavior of always reposting any and all available data back to **entree** any time a document is closed regardless of whether or not any other work is done while the document is open.



## entrée.UPC RF Terminal Application Features



- **The "New SOLO Invoice" Feature Retired:**

With the removal of the "SOLO invoice" option in the Preferences dialog there was no longer a need for an "Invoicing" menu in **entrée.UPC**. When you choose "Invoicing" from the main **entrée.UPC** menu on your RF terminal it now takes you directly into the Invoicing process (top).

- **New "Hold for Scanning" Feature in Receiving:**

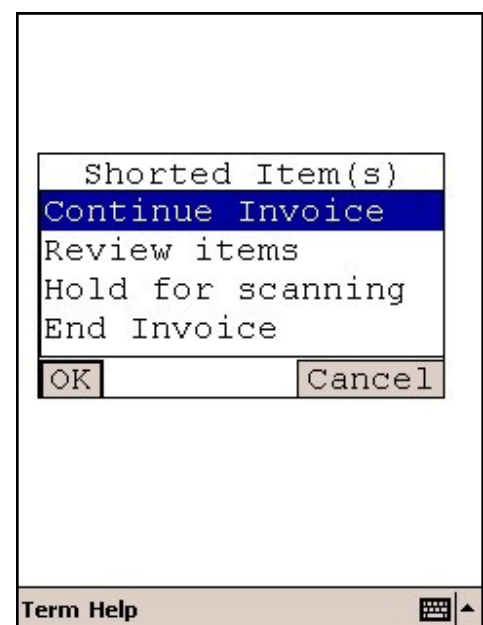
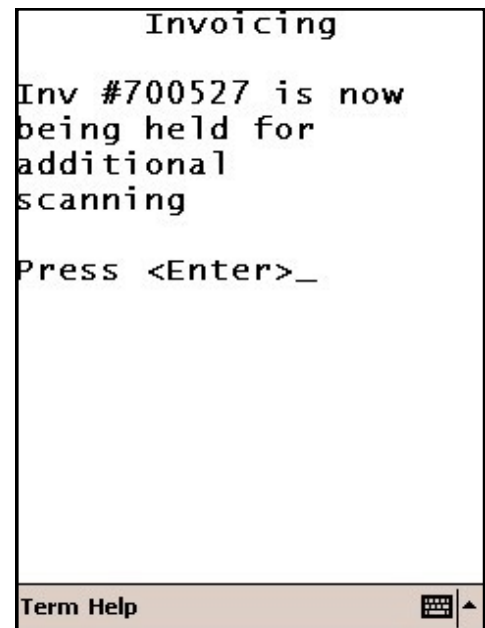
The "Hold for Scanning" feature allows the terminal operator to temporarily close out of a document without worrying that someone in the office will edit or print the document while it is not actively being used in the **entrée.UPC** system.

This feature works by setting a flag on the Purchase Order or Invoice that prevents the document from being edited or printed in the main **entrée** system while **entrée.UPC** has it. The image on the top shows that the RF terminal is holding an invoice.

In the 2nd image you can see the "Hold for Scanning" and "Continue Invoice" options in the menu on the RF terminal screen.

- **Updated "Shorted Items" Review Process:**

The operation of the "Shorted Items" review process has been changed for both Receiving and Invoicing, so that as each item is displayed, you will have the option of reviewing the scanned weight data by hitting the "W" key.



## entrée.UPC Application Features



- Physical Inventory Process Redesigned:**

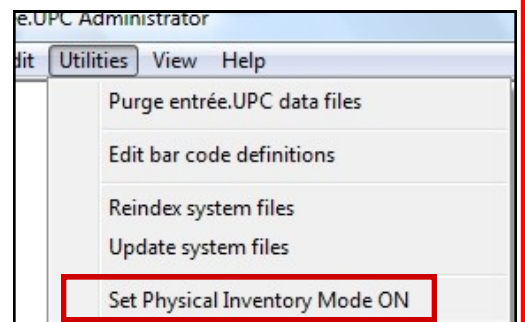
The **entrée.UPC** application will no longer handle the posting of the data to **entrée**. The Physical Inventory process has been modified so that **entrée.UPC** will *only collect the data*.

A new "Post Physical Adjustments from entrée.UPC" option in the Inventory menu (top right) in the main **entrée** system will now allow you to review the data collected from scanning, make adjustments and then update your **entrée** inventory.

To avoid confusion or potential conflicts the **entrée.UPC** system *must* be put into a special "Physical Inventory Mode" using the "Set Physical Inventory Mode ON" option on the Utilities menu of the **entrée.UPC** Administrator (2nd image).

When the **entrée.UPC** system is in Physical Inventory Mode no Receiving or Invoicing operations may be performed because this could alter inventory. Features like "Identify" and the "Diagnostic Utility", which are not document related, are still available while in this mode on the RF terminal.

In the Post Physical Adjustments screen image below the red highlight on the "Scan" fields indicates that those items were not scanned and provides a warning about the existing on hand quantity.



Post Physical Adjustments From entrée.UPC

Item #	Description	New Qty	New Wgt	Curr Qty	Curr Wgt	Scan Qty	Scan Wgt
		0	0.0000	0	0.0000	0	0.0000
00001	BRDL TASSO HAM FROZEN	0	0.0000	1	11.0600	0	0.0000
00002	BRDL PROSCIUTTO DE PARMA-34017	0	0.0000	1	15.4500	0	0.0000
00003	RWZ TURKEY GIZZARD 30# BOX	0	0.0000	14	420.0000	0	0.0000
00004	NORBEST RAW TURKEY THIGH MEAT	0	0.0000	0	0.0000	0	0.0000
00005	BNLS/SKINLESS TURKEY THIGH NETTED	0	0.0000	623	25163.9000	0	0.0000
00007	PIG WHOLE HEAD ON 180 AND UP FROZEN	0	0.0000	0	0.0000	0	0.0000
00035	NORBEST TURKEY 16/18 FROZEN	0	0.0000	0	0.0000	0	0.0000
00040	CHICKEN FAT	0	0.0000	1	19.8000	0	0.0000
00088	NORBEST TURKEY FRESH 16/22	0	0.0000	0	0.0000	0	0.0000

Buttons: Re-read Scanned Data, Purge Pending Changes, Post Data To Inventory, Save and Exit, Exit Without Saving

## entrée.UPC Application Features



### Post Physical Adjustments Buttons:

- **Re-read Scanned Data** - Reads and reloads the data collected from scanning.
- **Purge Pending Changes** - Removes all entered adjustments that have not been saved.
- **Post Data to Inventory** - Updates the inventory file with all entered adjustments.
- **Save and Exit** - Save the entered adjustments and exits the dialog. Inventory is not updated.
- **Exit Without Saving** - Exits the dialog and does not save entered adjustments.

### Physical Inventory Process Redesigned:

The review and posting process in **entrée** requires the **entrée.UPC** system remain in Physical Inventory Mode so that scanning operations won't alter the inventory data before you have posted the scanned data and any adjustments.

Once the inventory process is complete you can go back to the "Utilities" menu of the **entrée.UPC** Administrator and click "Set Physical Inventory Mode OFF" to allow normal scanning operations to resume.

**Note:** When using the "Post Physical Adjustments" utility (page 10) the inventory for any and all items which were **not** scanned (or manually adjusted after scanning) will be adjusted to **zero**.

Item #	Description	New Qty	New Wgt	Curr Qty	Curr Wgt	Scan Qty	Scan Wgt
		0	0.0000	0	0.0000	0	0.0000
00001	BRDL TASSO HAM FROZEN	0	0.0000	1	11.0600	0	0.0000
00002	BRDL PROSCIUTTO DE PARMA-34017	0	0.0000	1	15.4500	0	0.0000
00003	RWZ TURKEY GIZZARD 30# BOX	0	0.0000	14	420.0000	0	0.0000
00004	NORBEST RAW TURKEY THIGH MEAT	0	0.0000	0	0.0000	0	0.0000
00005	BNLS/SKINLESS TURKEY THIGH NETTED	0	0.0000	623	25163.9000	0	0.0000
00007	PIG WHOLE HEAD ON 180 AND UP FROZEN	0	0.0000	0	0.0000	0	0.0000
00035	NORBEST TURKEY 16/18 FROZEN	0	0.0000	0	0.0000	0	0.0000
00040	CHICKEN FAT	0	0.0000	1	19.8000	0	0.0000
00088	NORBEST TURKEY FRESH 16/22	0	0.0000	0	0.0000	0	0.0000

## entrée.UPC Application Features



### • Cycle Count Feature:

The new Cycle Count feature will allow you to adjust the inventory on specific items. Unlike the full-fledged Physical Inventory process, the Cycle Count feature (top right) does *not* require the system to be in Physical Inventory Mode to count an item.

Similar to the Physical Inventory process, the **entrée.UPC** system only does the data collection. The review and posting of the collected data is handled in the main **entrée** system.

The "Post Cycle Counts from entrée.UPC" menu option in the **entrée** Inventory menu (2nd image) will display the Post Cycle Counts screen (bottom).

Another major difference from the regular Physical Inventory system is that adjustments will only be made to those items which have been scanned. Items that are *not* scanned will *not* be changed.

### Post Cycle Counts Buttons:

- **+ Add** - Used to manually add a new item to the list.
- Double click the item to edit the Physical Adjustment Item Details.
- **- Delete** - Used to remove an item from the list.
- **Post Item** - Apply the update for the selected item highlighted in blue.
- **Post All Adjustments** - Updates the inventory file with all entered cycle count adjustments.

### Post Cycle Count Manual Adjustments:

- For lot based items using the Add button's Physical Adjustment Item Detail dialog allows you to make adjustments to a given lot and lock in that change with the Apply button before adjusting another lot.

- When scanning is done incorrectly you can quickly make manual adjustments using this dialog. Say the manger realizes that the terminal operator has missed a pallet, you can use this dialog to manually enter the missing item information using the **Add** button's Physical Adjustment Item Detail dialog.

- This dialog can also be used to manually adjust items which have not been or cannot be scanned. This provides an alternative method to posting the scan-based changes here and then jumping over to the Physical Adjustments utility to post the adjustments for the items not scanned.

Item #	Description	New Qty	New Wgt	Curr Qty	Curr Wgt	Scan Qty	Scan Wgt
24121	CSF USDA PRIME BEEF EXPORT RIBS	10	775.6500	35	2662.0000	10	775.6500
31325	SEABOARD PORK LOINS 21 DN WHOLE	1	82.0000	37	2955.6800	1	82.0000
403	SU-KARNE BEEF SHORTLOIN 0x1	5	268.9400	0	0.0000	5	268.9400
4389	IBP USDA PRIME SHORTLOIN #174	1	79.1000	40	3195.7000	1	79.1000

## entrée.UPC Application Features

- **entrée.UPC User Sign On:**

The process of logging into the **entrée.UPC** Wavelink environment now validates the user's credentials against the **entrée** system's password file instead of the Wavelink user database. Due to this change user accounts must be created for your terminal operators in the main **entrée** system (see **entrée** User Accounts topic below).

Wavelink user accounts will continue to play a role in the Sign On process, so you *must* make sure that Wavelink is correctly configured to support the **entrée.UPC V3** application.

Installed with the **entrée.UPC Administrator** application is the "Log-in configuration.txt" document which has detailed Wavelink configuration instructions.

- **entrée User Accounts:**

1 Since the process of logging into the Wavelink system and **entrée.UPC** has been changed to use the **entrée** password file, we recommended that you create individual user accounts for each of your terminal operators in the main **entrée** system. You will use the Security Management utility in the **entrée** System menu to create user accounts. An example of the **entrée** Create User screen is below. If the terminal operator is also a Picker you can also enter a "Picker code" here. After user accounts are created and validated the "Settings" button is used to set permissions for each user account (see page 15).

The benefits of using individual user accounts include:

1. Provides you with the same kind of menu-item-level access control that you have in the main **entrée** system along with new miscellaneous option settings.
2. **entrée.UPC** will tag the activity in the system, along with all scan data, with the identity of the person who performed the activity using the **entrée** user account. So as people log into and out of the system and open and close individual documents for scanning these actions will be saved in an activity log file.
3. You now have the ability to monitor system activity by generating reports which will combine the data in the activity log file with the data in the scan detail files (see pages 17 - 21 for reports).



entrée.UPC  
Sign On Screen  
-----  
Name: creed  
Password:   
  
Ctrl+X = Log Off  
Term Help

Create User  
User name: JACK  
Description: WAREHOUSE  
Full name: JACK M.  
Order taker code:  
Picker code: JM  
 Credit Manager  Credit Supervisor  
Password: xxxx  
Confirm Password: xxxx  
 Account is disabled  
OK Cancel

## New entrée Security System User Settings



The **Settings** button is used to set permissions for each user account.

- Check the feature to allow access to the user account. Options are entrée.UPC, Receiving, Inventory, Invoicing, Utilities and Miscellaneous with lower level options for Count, Cycle Count, Identity, Bar Code diagnostic and Bar code definition.

### Miscellaneous Settings

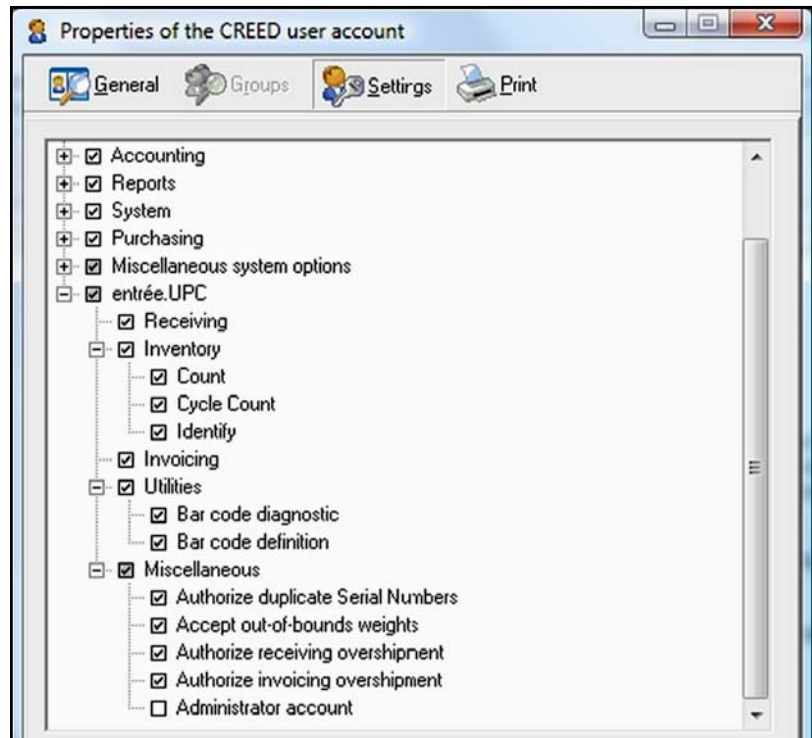
- **Authorize Duplicate Serial Numbers:**

When this option is turned on, (default is On), if you scan a duplicate Serial Number value the terminal operator will be offered the option of keeping the scan.

Turning this option off will convert the prompt to a notification message and the duplicate scan will be discarded.

- **Accept Out-of-bounds Weights:**

When this option is turned on, (default is On), if a scan (or manual weight entry) returns a weight value which is outside of the established Min/Max limits for the item the operator is given the option to keep the scanned weight, manually enter a correct weight or discard the scan.



Since there can be legitimate reasons for the weight to be outside of the established bounds, a "supervisor override" feature similar to what you might sometimes see in **entrée** was added.

When this option is off, the terminal operator will see a notification message about the rejected weight. Then the next prompt gives them the option to discard the entry or to enter the username and password of an "Administrator" user to keep the entry.

- **Authorize Receiving Overshipment:**

When this option is turned on, (default is On), if the quantity received against a Purchase Order item exceeds the Quantity Ordered the **entrée.UPC** application would normally ask the operator whether or not to keep the extra item.

Turning this option off changes the prompt to a notification message and discards the entry.

- **Authorize Invoicing Overshipment:**

When this option is turned on, (default is On), if the quantity shipped against an Invoice item exceeds the Quantity Ordered the **entrée.UPC** application would normally ask the operator whether or not to keep the extra item.

Turning this option off changes the prompt to a notification message and discards the entry.

- **Administrator Account** (default is Off): This setting provides two features:

1. First, if the standard setup recommendations for Wavelink are followed, a user account with this option enabled will have access to the Wavelink network diagnostic utility ("Wavelink Ping") which can be used to help identify issues with the wireless network.
2. It gives this user the ability to override certain restrictions imposed on other user accounts.

## entrée Edit Interlock System Settings



- **Edit Interlocks Settings in entrée:**

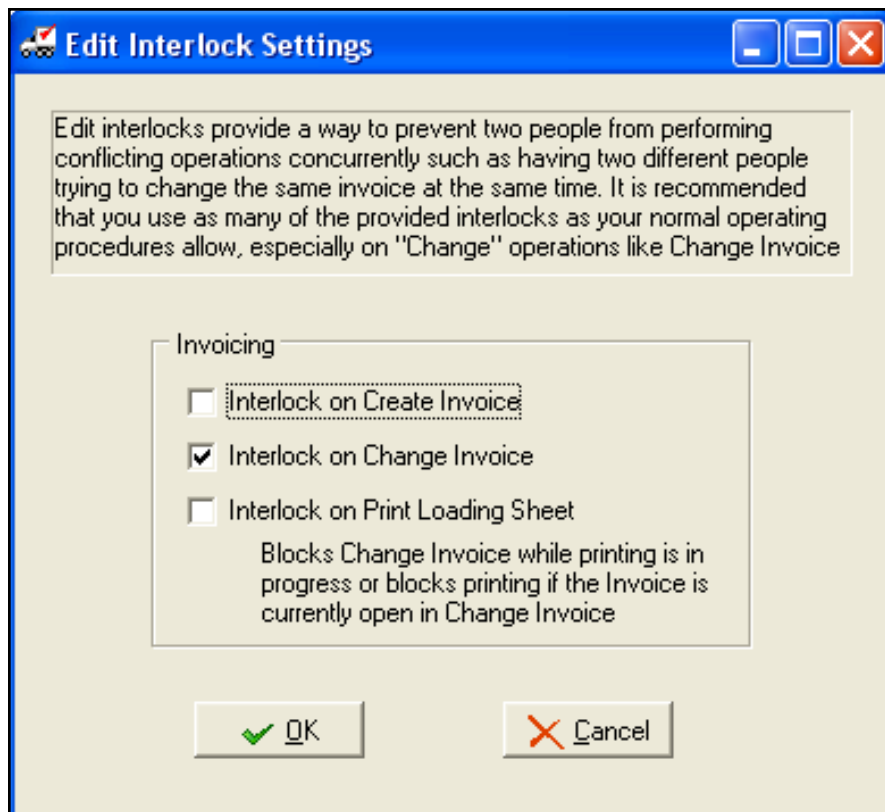
The **entrée** "Edit Interlock" system when enabled restricts access to a given Purchase Order or Invoice so that only one person can edit (or scan) the document at any given time. Access the **entrée** Edit Interlocks configuration process using menu path: **System > Preferences > System Options** tab > **Additional Features** drop down menu > select **Configure Edit Interlocks** and click the **Configure** button to access the Edit Interlocks Settings dialog.

- **Interlock on Create Invoice:** Prevents two workstations from creating a new invoice for the same customer at the same time.
- **Interlock on Change Invoice:** Prevents two workstations from editing the same Invoice at the same time.
- **Interlock on Print Loading Sheet:** Stops the printing of Loading Sheets for a document which is currently open for editing.

When combined with the "Hold for scanning" feature on the RF terminal, (see Hold for scanning topic on page 10), this can prevent changes from being made to a document which is already being scanned.

Then when the document is being edited or printed in the main **entrée** application the **entrée.UPC** application will not be able to open it.

**Note:** This feature restricts the operation of the **entrée.UPC** system so that only *one* RF terminal may access a given document at any time. (See the **entrée.UPC** "Apply Edit Locks During Scanning" topic on page 9 for more information.)



## entrée Reports



- **UPC Activity Log:** This report will provide you with a record of the scan activity for a specific user name for the selected time period. This report shows the productivity of scanning operations and can be used as an audit trail to find and resolve problems with invoices, POs, equipment or terminal operators.

### Options:

- The **Dates** section provides a date range value to be used to focus your report.
- The **Report Options** section allows you to check the “Show For” activity you would like to view in the report. Use the **Select All** or **Select None** buttons and check only the options you would like in the report.

### Show For options:

- Wavelink Status - The status of the RF terminal Wavelink application.
- entree.UPC Application Opened
- entree.UPC Application Closed
- Purchase Order selected for Scanning
- Scanning ended on PO - Complete
- Scanning ended on PO - Hold
- Invoice selected for Scanning
- Scanning ended on Invoice - Complete
- Scanning ended on Invoice - Hold

The report example below only used the three Invoice related “Show For” options.

Date: 12/12/11  
Time: 1:45 PM

Madison Distributors, Inc.

Page: 1

**UPC Activity Log**  
Covers Period: through Dec 12 2011

Time	Process Description	Document Type	Document Number	Company Name
------	---------------------	---------------	-----------------	--------------

Security User Name: CREED  
Date: 11/21/11

18:17:18	Invoice selected for Scanning	INVOICE	700527	MGM GRAND HOTEL
18:17:27	Scanning ended on Invoice - Complete	INVOICE	700527	MGM GRAND HOTEL
18:17:31	Invoice selected for Scanning	INVOICE	700527	MGM GRAND HOTEL
18:18:46	Scanning ended on Invoice - Hold	INVOICE	700527	MGM GRAND HOTEL

# entrée Reports



- **Product Recall Report:** In the event of a product recall this report will allow you to quickly identify those products and take the proper actions to protect the public.

**Options:**

- The **Dates** section provides numerous date values to be used to target the specific items being recalled. Dates include: Production Date, Pack Date, Sell By Date and Expiration Date.
- The **Report Options** section lets you search and select the Recall item from inventory.

**UPC Product Recall Report**

General
Filters
Layout
Appearance
Output
Configure
Preview Layout

**Dates:**

Production Date from:  to:

Pack Date from:  to:

Sell By Date from:  to:

Expiration Date from:  to:

**Report Options**

Recall Item:

Date: 12/12/11	<b>Madison Distributors, Inc.</b>	Page: 1								
Time: 1:47 PM	<b>UPC Product Recall Report</b>									
	Item: U80412 - UTILITY BEEF STRIPLOIN 100% PL									
Document Number	Document Date	Lot Number	Serial Number	Count	Weight	Prod. Date	Pack Date	Sell By Date	Exp. Date	Is Match
Document Type: RECEIPTS										
Account: PACKP - PACKERLAND-PLAINWELL (AKA MURCO)										
103964	04/03/08	080326	020860241812	1	57.80	/ /	/ /	/ /	/ /	Y
103964	04/03/08	080326	020860242572	1	56.40	/ /	/ /	/ /	/ /	Y
103964	04/03/08	080326	020860243082	1	64.10	/ /	/ /	/ /	/ /	Y
103964	04/03/08	080326	020860243172	1	66.20	/ /	/ /	/ /	/ /	Y
103964	04/03/08	080326	020860243842	1	65.90	/ /	/ /	/ /	/ /	Y
103964	04/03/08	080326	020860244412	1	64.20	/ /	/ /	/ /	/ /	Y
103964	04/03/08	080326	020860244472	1	58.60	/ /	/ /	/ /	/ /	Y
103964	04/03/08	080327	020870136131	1	61.40	/ /	/ /	/ /	/ /	Y
103964	04/03/08	080327	020870136611	1	63.70	/ /	/ /	/ /	/ /	Y
103964	04/03/08	080327	020870138321	1	67.30	/ /	/ /	/ /	/ /	Y
103964	04/03/08	080327	020870230392	1	72.90	/ /	/ /	/ /	/ /	Y
103964	04/03/08	080327	020870230722	1	66.20	/ /	/ /	/ /	/ /	Y
103964	04/03/08	080327	020870241022	1	54.80	/ /	/ /	/ /	/ /	Y
103964	04/03/08	080328	020880134001	1	63.00	/ /	/ /	/ /	/ /	Y
103964	04/03/08	080328	020880134331	1	65.00	/ /	/ /	/ /	/ /	Y
103964	04/03/08	080328	020880134461	1	66.30	/ /	/ /	/ /	/ /	Y
103964	04/03/08	080328	020880134541	1	69.10	/ /	/ /	/ /	/ /	Y
103964	04/03/08	080328	020880134631	1	72.80	/ /	/ /	/ /	/ /	Y
103964	04/03/08	080328	020880135041	1	58.90	/ /	/ /	/ /	/ /	Y
103964	04/03/08	080328	020880229892	1	61.80	/ /	/ /	/ /	/ /	Y
103964	04/03/08	080328	020880229922	1	59.40	/ /	/ /	/ /	/ /	Y
103964	04/03/08	080328	020880230232	1	63.60	/ /	/ /	/ /	/ /	Y
103964	04/03/08	080328	020880231022	1	60.50	/ /	/ /	/ /	/ /	Y
103964	04/03/08	080328	020880231042	1	65.40	/ /	/ /	/ /	/ /	Y
103964	04/03/08	080328	020880231532	1	75.80	/ /	/ /	/ /	/ /	Y
103964	04/03/08	080328	020880231822	1	70.90	/ /	/ /	/ /	/ /	Y
103964	04/03/08	080328	020880232112	1	63.60	/ /	/ /	/ /	/ /	Y
103964	04/03/08	080328	020880232152	1	58.10	/ /	/ /	/ /	/ /	Y
103964	04/03/08	080328	020880232682	1	59.30	/ /	/ /	/ /	/ /	Y
103964	04/03/08	080329	020890142981	1	66.70	/ /	/ /	/ /	/ /	Y
PACKP - PACKERLAND-PLAINWELL (AKA MURCO) Sub-Totals:										
				30	1,919.70					
RECEIPTS Sub-Totals:										
				30	1,919.70					

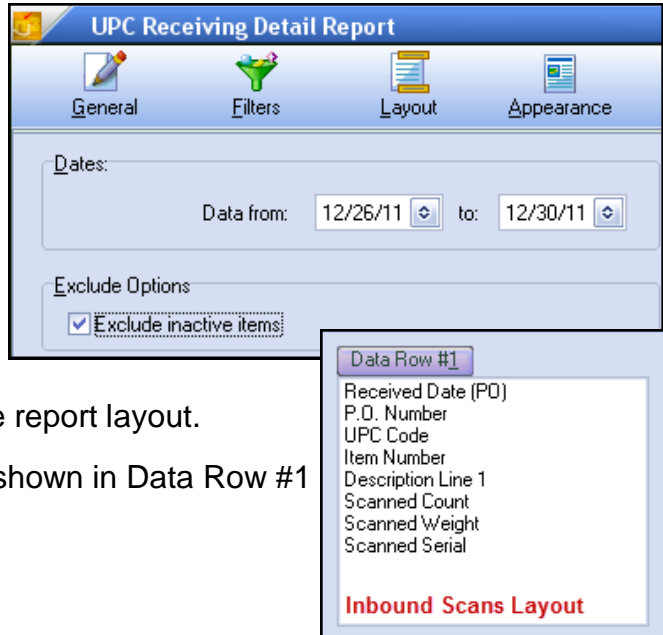
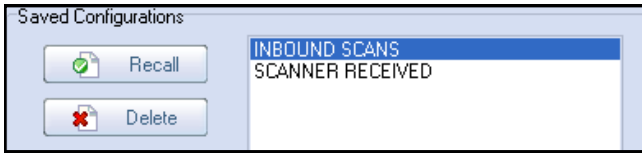
# entrée Reports



## • UPC Receiving Detail Report:

### Options:

- The **Dates** section provides a date range value.
- The **Exclude Options** section allows you to exclude inactive items.



There are two saved configurations for this report in the main entrée system **Inbound Scans** and **Scanner Received**. Select the desired report configuration and click the **Recall** button to load the report layout.

The fields in the **Inbound Scans** report layout are shown in Data Row #1 on the right.

Date: 12/27/11  
Time: 3:13 PM

**Madison Distributors, Inc.**  
**UPC Receiving Detail Report**  
Covers Period: Feb 27 2008 - May 17 2008

Page: 1

Received Date (PO)	P.O. Number	UPC Code	Item Number	Description Line 1	Scanned Count	Scanned Weight	Scanned Serial
<b>Item Number: 217361 - P.B.WAGYU WHOLE TENDERLOIN 5-6 5 pc</b>							
05/08/08	105677	217361	217361	P.B.WAGYU WHOLE TENDERLOIN 5-6 5 pc	1	24.48	005148
05/08/08	105677	217361	217361	P.B.WAGYU WHOLE TENDERLOIN 5-6 5 pc	1	25.36	005125
05/08/08	105677	217361	217361	P.B.WAGYU WHOLE TENDERLOIN 5-6 5 pc	1	26.68	004629
05/08/08	105677	217361	217361	P.B.WAGYU WHOLE TENDERLOIN 5-6 5 pc	1	26.24	004959
05/08/08	105677	217361	217361	P.B.WAGYU WHOLE TENDERLOIN 5-6 5 pc	1	25.80	004617
<b>217361 - P.B.WAGYU WHOLE TENDERLOIN 5-6 5 pc Sub-Totals:</b>					5	128.56	
<b>Item Number: 217372 - P.B.WAGYU BEEF STRIPLOIN 0X1 #5-6</b>							
05/08/08	105677	217372	217372	P.B.WAGYU BEEF STRIPLOIN 0X1 #5-6	1	28.00	008359
05/08/08	105677	217372	217372	P.B.WAGYU BEEF STRIPLOIN 0X1 #5-6	1	31.75	008206
<b>217372 - P.B.WAGYU BEEF STRIPLOIN 0X1 #5-6 Sub-Totals:</b>					2	59.75	
<b>Item Number: 217377 - P.B.WAGYU WHOLE TENDERLOIN 5-6 4 pc</b>							
05/08/08	105677	217377	217377	P.B.WAGYU WHOLE TENDERLOIN 5-6 4 pc	1	20.95	008506
05/08/08	105677	217377	217377	P.B.WAGYU WHOLE TENDERLOIN 5-6 4 pc	1	20.73	008357
05/08/08	105677	217377	217377	P.B.WAGYU WHOLE TENDERLOIN 5-6 4 pc	1	20.29	008549
05/08/08	105677	217377	217377	P.B.WAGYU WHOLE TENDERLOIN 5-6 4 pc	1	19.85	008545
05/08/08	105677	217377	217377	P.B.WAGYU WHOLE TENDERLOIN 5-6 4 pc	1	17.86	008725
<b>217377 - P.B.WAGYU WHOLE TENDERLOIN 5-6 4 pc Sub-Totals:</b>					5	99.68	
<b>Item Number: 225535 - P.B. WAGYU BEEF RIBEYE #5-6</b>							
05/08/08	105677	225535	225535	P.B. WAGYU BEEF RIBEYE #5-6	1	31.09	007886
05/08/08	105677	225535	225535	P.B. WAGYU BEEF RIBEYE #5-6	1	30.43	007963
<b>225535 - P.B. WAGYU BEEF RIBEYE #5-6 Sub-Totals:</b>					2	61.52	
<b>Item Number: 225552 - P.B. WAGYU BEEF RIBEYE #7-8</b>							
05/08/08	105677	225552	225552	P.B. WAGYU BEEF RIBEYE #7-8	1	21.39	008624
<b>225552 - P.B. WAGYU BEEF RIBEYE #7-8 Sub-Totals:</b>					1	21.39	

# entrée Reports



- **UPC Receiving Detail Report:**

**Options:**

- The **Dates** section provides a date range value.
- The **Exclude Options** section allows you to exclude inactive items.

The fields in the **Scanner Received** report layout are shown in Data Row #1 image.

Data Row #1

- P.O. Number
- Item Number
- Received Amount
- Scanned Count
- Scanned Weight
- Scanned Serial
- Scan Posted
- UPC Code

**Scanner Received Layout**

**UPC Receiving Detail Report**

General
 Filters
 Layout
 Appearance

Dates: Data from: 12/26/11 to: 12/30/11

Exclude Options

Exclude inactive items

Date: 12/27/11  
Time: 3:15 PM

**Madison Distributors, Inc.**  
**UPC Receiving Detail Report**  
Covers Period: Feb 27 2008 - May 17 2008

Page: 4

P.O. Number	Item Number	Received Amount	Scanned Count	Scanned Weight	Scanned Serial	Scan Posted	UPC Code
103964	U80412	36,423.68	1	63.60	020880232112		9072323601
103964	U80412	36,423.68	1	70.90	020880231822		9072323601
103964	U80412	36,423.68	1	58.90	020880135041		9072323601
103964	U80412	36,423.68	1	66.20	020860243172		9072323601
103964	U80412	36,423.68	1	66.20	020870230722		9072323601
103964	U80412	36,423.68	1	64.10	020860243082		9072323601
103964	U80412	36,423.68	1	61.40	020870136131		9072323601
103964	U80412	36,423.68	1	64.20	020860244412		9072323601
103964	U80412	36,423.68	1	58.10	020880232152		9072323601
105677	217361	5,430.89	1	24.48	005148		217361
105677	217361	5,430.89	1	25.36	005125		217361
105677	217361	5,430.89	1	26.68	004629		217361
105677	217361	5,430.89	1	26.24	004959		217361
105677	217361	5,430.89	1	25.80	004617		217361
105677	217372	5,430.89	1	28.00	008359		217372
105677	217372	5,430.89	1	31.75	008206		217372
105677	217377	5,430.89	1	20.95	008506		217377
105677	217377	5,430.89	1	20.73	008357		217377
105677	217377	5,430.89	1	20.29	008549		217377
105677	217377	5,430.89	1	19.85	008545		217377
105677	217377	5,430.89	1	17.86	008725		217377
105677	225535	5,430.89	1	31.09	007886		225535
105677	225535	5,430.89	1	30.43	007963		225535
105677	225552	5,430.89	1	21.39	008624		225552

Report Totals:

	6,637,725.	195	10,554.60		
--	------------	-----	-----------	--	--

## entrée Reports



- **UPC Invoicing Detail Report:**

**Options:**

- The **Dates** section provides a date range value.
- The **Exclude Options** section allow you to exclude inactive items and invoices in the credit queue.

**UPC Invoicing Detail Report**

General
 Filters
 Layout
 Appearance

Dates:

Data from:  to:

Exclude Options:

Exclude inactive items

Exclude credit queue invoices

Date: 12/27/11  
Time: 3:28 PM

**Madison Distributors, Inc.**  
**UPC Invoicing Detail Report**  
Covers Period: Mar 03 2008 - Mar 04 2008

Item Number	Bill To Company	Invoice Date	Invoice Number	UPC Number	Scanned Count	Scanned Weight	Scanned Lot Number	Scanned Serial
90723236	US FOODSERVICE VALLE	03/03/08	651079	N23052	1	77.40	080225	210105622452
90723236	US FOODSERVICE VALLE	03/03/08	651079	N23052	1	67.30	080301	210106121189
90723236	US FOODSERVICE VALLE	03/03/08	651079	N23052	1	77.30	080301	210106121068
	US FOODSERVICE VALLE	03/03/08	651079	S24022	1	42.50	080228	0105921778
	US FOODSERVICE VALLE	03/03/08	651079	S24022	1	40.40	080228	0105922130
	US FOODSERVICE VALLE	03/03/08	651079	S24022	1	44.00	080228	0105922028
	US FOODSERVICE VALLE	03/03/08	651079	S24022	1	43.20	080228	0105922056
	US FOODSERVICE VALLE	03/03/08	651079	S24022	1	42.10	080228	0105922086
	US FOODSERVICE VALLE	03/03/08	651079	S24022	1	45.80	080228	0105921717
	US FOODSERVICE VALLE	03/03/08	651079	S24022	1	49.10	080228	0105921965
	US FOODSERVICE VALLE	03/03/08	651079	S24022	1	38.10	080228	0105922167
	US FOODSERVICE VALLE	03/03/08	651079	S24022	1	39.80	080228	0105922030
	US FOODSERVICE VALLE	03/03/08	651079	S24022	1	42.50	080228	0105922153
	GREEN VALLEY RESORT	03/03/08	651081	929914	1	53.27	8059	
	GREEN VALLEY RESORT	03/03/08	651081	929914	1	52.82	8059	
	GREEN VALLEY RESORT	03/03/08	651081	929914	1	54.35	8059	
	GREEN VALLEY RESORT	03/03/08	651081	929914	1	52.88	8059	
	GREEN VALLEY RESORT	03/03/08	651081	929914	1	50.48	8059	
9312300	GREEN VALLEY RESORT	03/03/08	651081	931230	1	22.10	080213	0002177903
9312300	GREEN VALLEY RESORT	03/03/08	651081	931230	1	17.10	080213	0002177255
9312300	GREEN VALLEY RESORT	03/03/08	651081	931230	1	20.20	080213	0002177256
	GREEN VALLEY RESORT	03/03/08	651081	96666	4	40.00		
02444057	GREEN VALLEY RESORT	03/03/08	651082	5738	1	10.00	080218	08884033
02444080	GREEN VALLEY RESORT	03/03/08	651082	8080	4	200.00		
07605293	BARLEY MICRO BREWERY	03/03/08	651083	31043	1	36.64	04309	0288
	BARLEY MICRO BREWERY	03/03/08	651083	34124	1	80.80	080226	0100009163
9317420	BARLEY MICRO BREWERY	03/03/08	651083	931742	1	12.20	080229	0002192303
9317420	BARLEY MICRO BREWERY	03/03/08	651083	931742	1	12.20	080229	0002192304
942075	BARLEY MICRO BREWERY	03/03/08	651083	942075	6	108.00		
02444055	GREEN'S CAFE	03/03/08	651084	5545	1	9.80		
02444055	GREEN'S CAFE	03/03/08	651084	5545	1	10.40		
9312340	GREEN'S CAFE	03/03/08	651084	931234	1	22.40	080204	0002169548
942075	GREEN'S CAFE	03/03/08	651084	942075	3	54.00		
6339020	GREEN'S CAFE	03/03/08	651084	P33902	1	5.90	080303	0001944180
6339020	GREEN'S CAFE	03/03/08	651084	P33902	1	6.50	080303	0001944181
6339020	GREEN'S CAFE	03/03/08	651084	P33902	1	6.50	080303	0001944182
6339020	GREEN'S CAFE	03/03/08	651084	P33902	1	6.40	080303	0001944183
6339020	GREEN'S CAFE	03/03/08	651084	P33902	1	6.30	080303	0001944184
6339020	GREEN'S CAFE	03/03/08	651084	P33902	1	6.30	080303	0001944185
6339020	GREEN'S CAFE	03/03/08	651084	P33902	1	6.70	080303	0001944186

## The GS1 Bar Code Standard Overview



- **GS1 Bar Code Symbology:**

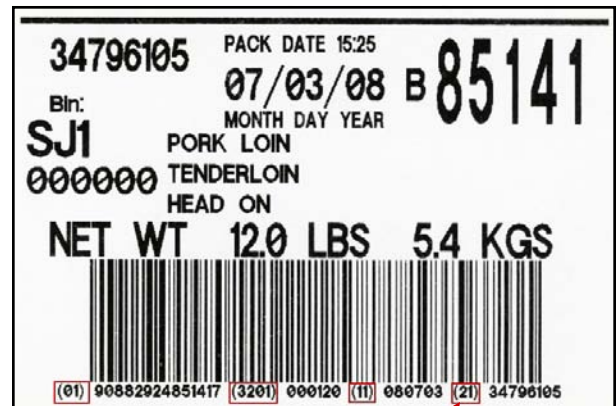
This GS1 standard uses a special variation of the "Code 128" bar code symbology which most scanners currently recognize as "UCC-128" or "EAN-128".

- **Application Identifiers:**

The GS1 standard defines a series of "Application Identifier" values which are used to identify the purpose of different data fields like "Item Number" or "Serial Number". In the man-readable portion of the bar code you will often see these values set off by parentheses. Unfortunately, there is nothing in the bar code data which identifies these values. Even so, "Application Identifier" values are still useful to us and we have implemented some new features to take advantage of them.

These "Application Identifiers" (outlined in red in the bar code label) are static data values which will typically appear in the same location in all of that vendor's bar codes. We say "typically" because the standard *does* allow for variable-length data fields. In all the cases of which we are aware of the vendor had the good sense to put the variable-length data at the end of the bar code (usually the Serial Number as shown in the image below from the Edit bar code definitions utility Data Locations Page 1 screen).

Since the identifiers are fixed values they can serve the same purpose as the Manufacturer's ID value in separating two bar code designs which would otherwise be identical. So each of the existing data field definitions now has an auxiliary set of definition values which allow you to associate the "Application Identifier" with the data value. Like the Manufacturer's ID, you define both the location of the value *and* the content.



Serial Number		Serial Number Identifier	
Start	37	Start	35
End	46	End	36
Length	10	Length	2
		Identifier Value	21

- **Error Checking:**

The second thing we are able to do with the GS1 data is to perform some basic error-checking when you are creating a new bar code definition. Some of the GS1 "Application Identifiers" specify not only what a particular value represents but, in some cases, how it should be interpreted. By having the bar code definition editing process interpret an identifier according to the GS1 specification we can perform some simple checks to make sure that the way you have defined the data field is consistent with what the vendor says is the actual content of the field. We'll get into this feature in more detail shortly.

## The GS1 Bar Code Standard Overview



### • **Defined Date Values:**

Lastly, the GS1 standard defines four different date values which may be associated with an item:

1. Production Date
2. Packaging Date
3. Sell-By Date
4. Expiration Date

Typically you will only see one of these values, maybe two, in a single bar code. The bar code definition system in **entree.UPC** has been expanded to add support for specifying all four of these date values. Since one of these dates may serve, either officially or unofficially, as the item's "Lot Number", the field definitions for these date values include a check box which allows you to designate one of them to be recorded as the "Lot Number" value for the scan.

### • **GS1 Data Values & entree.UPC:**

Although there are a wide variety of data values which can be identified under the GS1 standard, there are really just a few which affect the **entree.UPC** system. The data values are as follows:

<u>entree.UPC Value</u>	<u>GS1 Identifier(s)</u>	<u>Data Length</u>
Lot Number	10, 23	up to 20 alphanumeric characters
Production Date	11	exactly 6 digits (YYMMDD - see * below)
Packaging Date	13	exactly 6 digits (YYMMDD)
Sell By Date	15	exactly 6 digits (YYMMDD)
Expiration Date	17	exactly 6 digits (YYMMDD)
Net Weight, Kilograms	310x (see + below)	exactly 6 digits
Gross Weight, Kilograms	330x (see + below)	exactly 6 digits
Net Weight, Pounds	320x (see + below)	exactly 6 digits
Gross Weight, Pounds	340x (see + below)	exactly 6 digits

\* The date identifier values are each two digits long then the following six digits represent the date value. The "YYMMDD" notation indicates that the format of the date is a two-digit year ("YY"), a two-digit month ("MM") and a two-digit day ("DD"). So a bar code containing "(11)081016" in the man-readable portion of the label then the value is a "Production Date" ("11") and so then "081016" represents October 16, 2008. No, the "2000" part is not explicitly specified anywhere but the standard specifies that, much like the way **entree** itself handles two-digit years, years from 00-50 should be interpreted as 2000's and years from 51-99 should be interpreted as 1900's.

+ The weight identifier values are each four digits long and then the following six digits represent the weight value. The "x" in the identifier represents the number of decimal places in the weight. So if you see "(3201)000450" in the man-readable portion of the label then you know that the "000450" value represents the weight of the item. The "320" portion means that it is a Net Weight value which is expressed in pounds. The "1" (in "3201") indicates that the weight is expressed to one decimal place which makes the weight value in this bar code 45.0 pounds. If the label read "(3202)000450" then the weight value is still "000450" but now the final "2" (in "3202") means that there are two decimal places in the value making the weight 4.50 pounds.

## Tips on Scanning the GS1 Bar Code



In the **entree.UPC** "Edit bar code definition" process (see pages 3 - 6 for information) uses these identifiers to help you extract the information correctly when scanning a bar code.

For example, if you associate the "3201" identifier with the weight value for this bar code but you have defined the "Weight Decimal Length" value as "2" then a warning will be raised since the specified ID value indicates there is only one decimal place. Or if you had a "3101" identifier but had not checked the "kilograms" option, again, a warning would be raised. In either case, it will be up to you to evaluate the situation and make any necessary corrections since the program has no way of knowing if you just typed "3101" by accident when you meant to type "32" or if the item weight really is in kilos.

- All of the data from the fields you have specified in the bar code definition are recorded in the scan queue files including the four possible date values (see page 14 Defined Date Values).
- All scan data is now recorded with the ID value of the user who performed the scan as well as a time stamp for when the scan was recorded (see page 11 User Accounts).

Some manufacturers produce bar codes which generally follow the GS1 Standard guidelines but which are encoded with "Code 128" symbology rather than "UCC-128".

While the bar code may *look* like a GS1 bar code, the scanner, and the **entree.UPC** bar code identification process, will most definitely make a distinction between the "Code 128" symbology and the "UCC-128" symbology.

This is the major reason why we *highly recommend* that you always use the "**Define Bar Code**" utility in the **entree.UPC** application to create bar code definitions from a scanned sample rather than creating definitions by hand in the **entree.UPC** Administrator.

### Need More Information?

For more information about **entree.UPC** please visit <http://www.necs.com/upc/>.

You can contact NECS Sales by calling 203.245.3999 or email [sales@necs.com](mailto:sales@necs.com).



Innovative Software Design +  
Food Distribution Expertise =  
**entrée**



NECS began in 1987 with its sole mission to produce top quality software for foodservice distributors. At that time, company president, Chris Anatra had determined that the software market was severely lacking in specialized software to address the needs of wholesale food distributors, especially those dealing with meat, seafood, produce, cheese as well as full line distributors.

The only products available at that time were needlessly complex, difficult to use, required expensive computer hardware costing into the six figures, and still did not meet all the needs of the foodservice distributor.

During this time period, the computer industry was beginning its move from large mainframe and minicomputer systems, to the more economical personal computer such, as the IBM PC. Chris Anatra, president of NECS, and the original developer of the NECS software, saw the opportunity to design a system based on the Microsoft and networking technologies available at that time. By adapting to this new technology early, it turned out to be a brilliant move that set NECS to become the leader in food distribution software. NECS was able to provide a comprehensive, easy-to-use software package, at an economical price.

Adapting to new technology early, and constantly providing new features for our user base, continues to be our company mission.

Over the years, the system has evolved into [entrée®](#), a comprehensive Windows\* application with more than 3 million lines of programming source code.

To date, almost 1,500 wholesale food distributors have decided that the NECS **entrée** system is the best product to meet their demanding needs. Our large network of satisfied customers makes this decision even easier.

Foodservice distributors which run their operations on NECS computer software are more profitable and operate more efficiently on reduced staffs. This leaves NECS with an enthusiastic user base, who readily recommends NECS software to other wholesale food distributors.

NECS customers range in size from smaller distributors with sales revenues of a few million per year, up to distributors with sales approaching \$200 million per year. The average size NECS customer has sales of \$25 million/year, and requires about 20 workstations.

**entrée** and NECS Food Distributing System are trademarks of NECS, Inc. in the United States and/or other countries. NECS, Inc. may have patents, patent applications, trademarks, or copyrights covering subject matter in this document. Except as expressly provided in any written license agreement from NECS, the furnishing of this document does not give you any license to these patents, trademarks, or copyrights.

\* Microsoft, Windows, Windows NT, Windows 2000, Windows ME, Windows XP, Windows 7, Windows Vista and Internet Explorer are either registered trademarks or trademarks of the Microsoft Corporation in the United States and/or other countries.

\* Wavelink is a registered trademark of Wavelink Corporation.

NECS, Inc.  
168 Boston Post Road Suites 6 & 7  
Madison, CT 06443  
Phone: 203.245.3999  
Fax: 203.245.4513

[www.necs.com](http://www.necs.com)

entrée